

# hard surfaces 2023

Where innovation meets design

Tuesday 6 to Thursday 8 June

9am – 5pm daily

EXCeL  
LONDON



Unit G Acorn Industrial Park, Crayford Road, Dartford, DA1 4FL  
info@bloomstoneslondon.co.uk | 0203 774 9683 | www.bloomstoneslondon.co.uk

Official  
catalogue

This show is  
supported by:



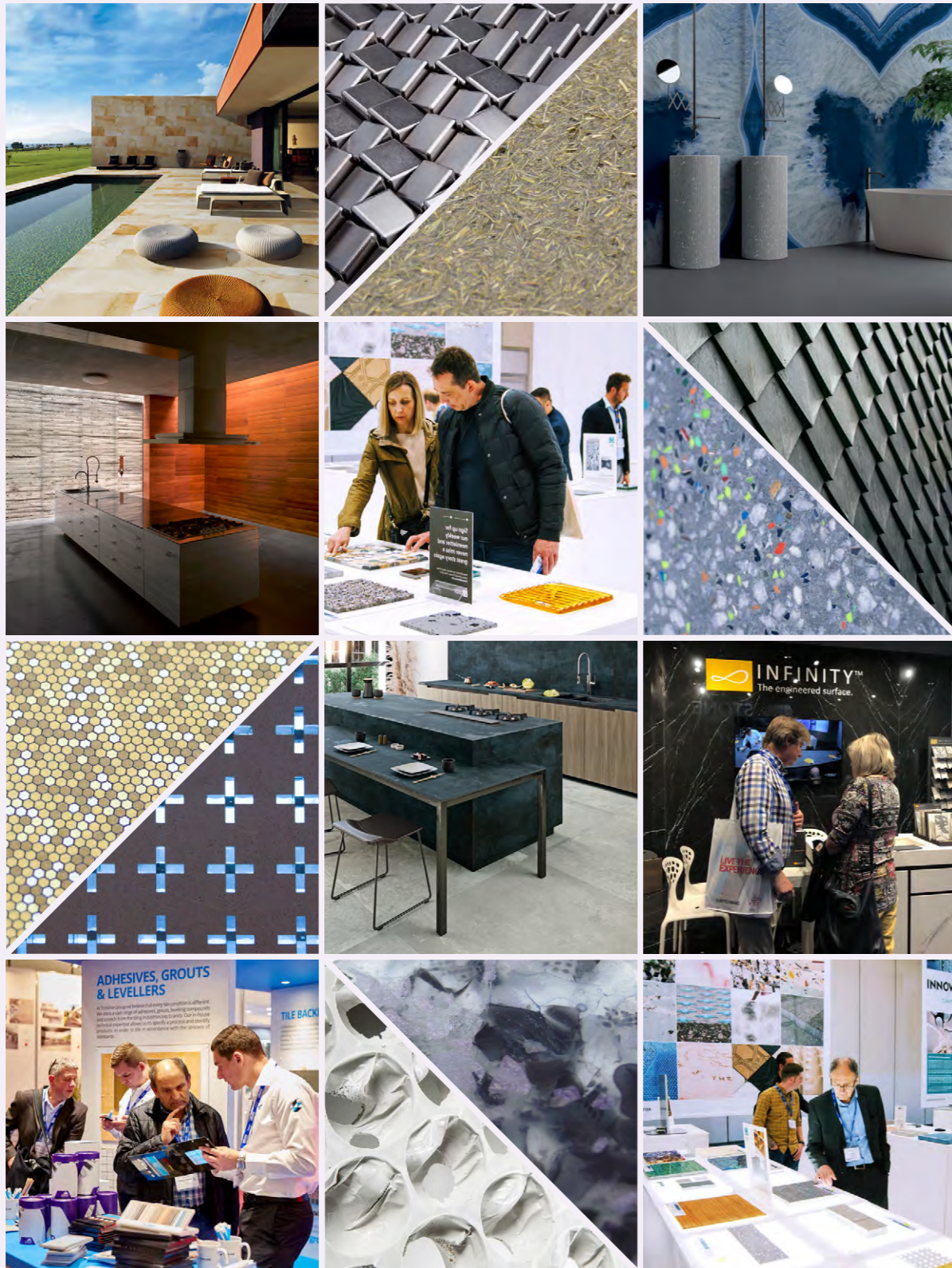
hardsurfaces.co.uk

Join the conversation     @hardsurfacesuk  
#hardsurfaces2023

in  
conjunction  
with 

# hard surfaces 2025

Where innovation meets design | 3-5 June | EXCEL LONDON



[www.hardsurfaces.co.uk](http://www.hardsurfaces.co.uk)

# hard surfaces 2023

Where innovation meets design | 6-8 June | EXCEL LONDON

## Richard Bradbury, Managing Director:

Welcome to the return of the 2<sup>nd</sup> edition of Hard Surfaces, co-located again with the Natural Stone Show. We're delighted to be back at ExCeL in our new June slot, after an extended break due to the pandemic.

We all need to step back from the hectic day-to-day running of our businesses sometimes for a bit of strategic thinking, and Hard Surfaces provides the ideal opportunity for that. It's a great environment to take a fresh look at the industry and discover new products and technology being launched by our exhibitors. See, touch, and experience all the new Collections first-hand... large-format and seamless inside-out living ranges are well represented this year. It's also worth making the time to take in our extensive CPD seminar programme to stimulate new ideas to benefit your business.

There has certainly been a lot of change in the hard surfaces market. Sintered stones and porcelains are still evolving and generally improving, at least as far as fabricators are concerned because the makers have put a fair amount of research and development into making their products easier to cut and polish. At the same time, the tool makers have perfected diamond tools that are more compatible with sintered stone and porcelain. The holy grail now is making it all more sustainable, which is happening fast, especially with the use of recycled materials, much of it pre-consumer recycled materials, and the use of renewable energy.

Sustainability is one of the subjects that will be discussed during the Hard Surfaces seminars, which are taking place in a dedicated theatre on the exhibition floor, so you can pick and choose those that interest you without taking too much time out from visiting the stands.

The seminars are being curated by tile industry influencer Joe Simpson, formerly the editor of *Tile & Stone Journal*. He is joined by an impressive line-up of speakers, including international tile guru Ryan Fasan, who delivers a 'global trends' digest for floor tiles, wall tiles and solid surfaces each morning of the show from 11am. There are also 'Workshop Insights' each day and a 'Fabricator Masterclass' that provides an insider's guide to equipment selection, cutting sequences, adhesives, substrates, and design detailing for stress-free worktop installations. You can read the full programme on pages 4-7.

Dutch visionaries MaterialDistrict also return this year with their curated 'sustainability meets design' feature. This showcases 100 genuinely innovative, low-carbon surfaces. It is well worth a visit. Take in all the exciting new developments shaping the Hard Surfaces sector and enjoy the show.

The Natural Stone Show and Hard Surfaces are owned and presented by

The **QMJ** Group

7 Regent Street  
Nottingham  
NG1 5BS

This Catalogue is printed in the UK by:  
Buxton Press,  
Buxton, Derbyshire

© QMJ Group, 2023

Information in this catalogue about exhibitors has been provided by the exhibitors themselves and they take full responsibility for the veracity of their statements.

While every effort has been made to reproduce colour in the illustrations faithfully to the original, due to the limitations of photography and printing, accuracy cannot be guaranteed. Always see samples of materials before buying or specifying.

## The QMJ team at ExCeL



Meet the Stone Show and Hard Surfaces organising team. They are (left to right) Dave Wright – Marketing & Social Media; Abi Smith – Assistant Event Manager; Charlotte Stacey – Exhibition Account Manager; Richard Bradbury – Show Director; David Fisher – Head of Exhibition Sales; Harvey Sugden – Event Manager.

To reserve a stand at the next in this series of exhibitions in 2025, contact Charlotte on +44 (0)115 945 4376 (charlotte.stacey@qmj.co.uk) or David +44 (0)115 865 8283 (david.fisher@qmj.co.uk).

## Official Catalogue

### Floorplan Natural Stone Show 04

A floorplan of the Natural Stone Show and Hard Surfaces is on page 4 of the Natural Stone Show Catalogue at the other end of this publication

### Product Selector Natural Stone Show 06

Where to find the category of products you are looking for

### Conference Programme 04

There is a comprehensive seminar programme associated with Hard Surfaces. This is the programme for the Hard Surfaces seminars

### A-Z of exhibitors 08

An alphabetical listing of exhibitors at Hard Surfaces, with addresses, telephone numbers, email addresses and a brief description of the exhibitor

### Natural Stone Specialist magazine

Natural Stone Specialist, the industry's magazine, is published as part of the Natural Stone Show Catalogue, beginning on page 54.

Technology, design trends and cutting the carbon footprint of products all get a look-in at the Hard Surfaces seminars curated by Joe Simpson. The seminars are being held in special areas on the exhibition floor.



In Italy, Kerakoll's GreenLab is developing sustainable, low carbon technology for making tiles.

## The rise and rise of hard surfaces

### Tuesday 6 June

#### Floor tile design trends

11:00 – 12:00

Canadian tile guru, Ryan Fasan, explores and explains the global floor tile design trends for 2023/24

##### 11:00– 11:05 Introduction

Joe Simpson, influencer and host

##### 11:05–11:45 Pattern, profile, and patina

Ryan Fasan, Tile of Spain's charismatic Consultant – a globally-acknowledged ceramic tile specialist – will drill deep into contemporary floor tile design trends worldwide.

##### 11:45–12:00 Q&A

Ryan Fasan and Joe Simpson answer your technical and aesthetic floor tile questions.

#### Decoration and detail

13:00–14:00

How digital inkjet and advanced decorating technologies have reinvigorated the market for both traditional artisan tiles and commercial ceramics. Also discussed: the emerging market for short-run bespoke tiles and panels; the enduring appeal of dynamic glaze effects.

##### 13:00–13:05 Introduction

Joe Simpson

##### 13:05–13:20 Bespoke short-run tiles

The potential for producing personalised products for projects... and beyond.

Cesar Carnicer, Commercial Director – Cevica  
Emilio Llorens, Sales Area Manager – Cevica

##### 13:20 – 13:35 Colour consistency

How factory-calibrated tonal balance across different marble-, wood-, stone- and cement-effect tiles and slab/worktop ranges guarantees on-site compatibility. Jamie Thomas, Managing Director – The Surface Collection by Thomas Group Marble & Granite

##### 13:35–13:50 Glaze alchemy

The unexpected and dynamic delights of continuous experimentation in glaze colour and composition. Peter Wood, CEO – Royce Wood Tiles

##### 13:50–14:00 Q&A and panel discussion

Joe Simpson, Cesar Carnicer, Sean Kennard, and Peter Wood answer your queries about ceramic tile decoration.

##### 14:20–14:45 Worktop insights

Invisible wireless charging for solid surfaces – how IPC Technology is providing fast charging for modern mobiles through your worktop  
Rupert Han, Business Development & product Manager – Kew Labs

#### The future of façades

15:00–16:00

The exponential rise of ventilated ceramic façades: stone-, metallic-, concrete-, and timber-effects. How designers and façade specialists are using different textures, framing options, and tile formats to meet the needs of modern architecture.

##### 15:00 – 15:05 Introduction

Joe Simpson

##### 15:05 – 15:30 Sublime surface skins

How porcelain provides the aesthetic appeal, and the technical performance, demanded by the UK's most demanding developers and façade specifiers.

Nic Shannon, MD – Domus Facades

##### 15:30 – 15:50 Digital disrupters

How Stylib, an AI driven material search platform, is reshaping specifiers' product discovery journeys for internal façades and finishes.

Noam Naveh, CEO – Stylib

##### 15:50 – 16:00 Q&A and panel discussion

Joe Simpson, Nic Shannon, and Noam Naveh answer your questions about façade finishes and application systems, and the technology driving on-line product selection and specification.

### Wednesday 7 June

#### Wall tile design trends

11:00 – 12:00

Tile of Spain's charismatic Canadian Consultant, Ryan Fasan, returns to highlight the latest worldwide design directions and fashion formats in wall tiles.

##### 11:00–11:05 Introduction

Joe Simpson

##### 11:05 – 11:45 Sinking inks and reactive glazes

Ryan Fasan, who heads Tile of Spain's influential Passport to Creativity tours, draws on his unsurpassed industry knowledge to present the latest global trends in wall tile design.

Ryan Fasan– Tile of Spain

##### 11:45–12:00 Q & A

Ryan Fasan and Joe Simpson answer your technical and aesthetic queries concerning ceramic and porcelain floor tiles.

#### Large-format installation insights

13:00–14:45

All you need to know about handling and installing XXL format tiles, including levelling systems, dry cutting versus wet cutting, and the latest site handling tools and systems.

##### 13:00–13:05 Introduction

Joe Simpson

##### 13:05–13:30 Cutting and levelling

How to cut and level XXL format tiles.

David Honeywell, Commercial Director – Rubi UK

##### 13:30–13:50 Handling

Secure site handling and installation techniques for XXL format tiles.

Jason Smith, Brand Manager UK – Brevetti Montolit

##### 13:50–14:00 Q&A and panel discussion

David Honeywell, Jason Smith and Joe Simpson answer your questions about site safety, installation options, cutting, and finishing XXL format tiles and gauged porcelain panels.

##### 14:20 – 14:45 Worktop insights

From concept to Coverlam, the evolution of new porcelain worktop designs, from initial inspiration through scanning and digital decoration to continuous pressing and firing.

Andres Hernandez, Marketing Manager, Grespania – Coverlam Top

#### Exterior elements

15:00–16:15

This session explores the growing market for 20mm and 30mm outdoor porcelain tiles, including dry, pedestal and adhesive laying systems, and the latest patterns and decorative options. Key factors – such as frost – and slip-resistance, sealing, and routine maintenance – are all covered.

##### 15:00 – 15:05 Introduction

Joe Simpson

##### 15:05–15:25 Inside-Out living

How the garden has become part of the home.  
Matt Williams, CEO – Stiled & Tile Giant

##### 15:25–15:45 Slip resistance simplified

Demystifying the science of slip testing and surface treatments.

Richard Bowman, Founder – Intertile Research  
Dr Stephen Thorpe, Chair – UK Slip Resistance Group

## 15:45 – 16:05 20mm tile formats

Rectified or non-rectified?

**Ruben Rivero-Ramos, UK Agent – Bestile**

## 15:45–16:15 Q&A and panel discussion

Matt Williams, Richard Bowman, Ruben Rivero-Ramos and Joe Simpson answer your questions about testing, selecting and installing 20mm exterior porcelain tiles.

## Thursday 8 June

### Design trends in exterior tiles and solid surfaces

11:00–12:00

Tile of Spain Consultant **Ryan Fasan**, one of the acknowledged fashion forecasters in the global tile arena, completes his trilogy of analytical talks by focusing on exterior tiling and solid surface trends for 2023/24.

#### 11:00–11:05 Introduction

Joe Simpson

#### 11:05–11:45 Digital deposition and vibrant veins

Ryan Fasan explains how advanced production techniques have added new depth and detail to today's exterior tiles and solid surfaces.

#### 11:45–12:00 Q&A

Ryan Fasan and Joe Simpson answer your technical and aesthetic queries concerning exterior tiles and solid surfaces.



Ryan Fasan.

### Environmental edge

13:00–14:45

This session offers detailed analysis of the green credentials of tiles, covering water re-use, embodied energy, co-generation, recycled content, raw material sourcing, transport, logistics, installation, durability, maintenance and end-of-life options.

#### 13:00–13:05 Introduction

Joe Simpson

#### 13:05–13:30 Going green: An Italian perspective

The Italian tile manufacturers' trade association, Confindustria Ceramica, sets out the ecological initiatives and investments that will drive and define Italian tile production for the next decade.

Mauro Rullo, Climate & Sustainability Officer – Confindustria Ceramica

#### 13:30–13:50 Ecological analysis

David Kong of Domus, The Tile Association's lead on sustainability issues, explains the TTA's drive to add real substance and verifiable statistics to the UK's environmental debate.

David Kong, Marketing Director – Domus Group

#### 13:50–14:00 Q&A and panel discussion

Mauro Rullo, David Kong and Joe Simpson answer your questions about LCAs, green labelling, and the sustainability credentials of ceramic and porcelain tiles.

#### 14:20–14:45 Fabricator Masterclass

The insider's guide to equipment selection, cutting sequences, adhesives, substrates, and design detailing for stress-free worktop installations.

TBC

### Sustainable specifications

15:00–16:00

This concluding session investigates and evaluates the sustainability pathways of one of Italy's most respected tile groups and a Spanish pacesetter in surface finishes and façades, plus a start-up that places care for the planet at the heart of its business model.

#### 15:00–15:05 Introduction

Joe Simpson

#### 15:05 – 15:20 Sustainable: The evolution of a new sector-leading sustainable material

An ecological, affordable, and recyclable alternative to composite stone surfaces.

Laurens Van Graafeiland, CEO – Sustonable

#### 15:20–15:35 Going green and still growing

Certification, circular economy, and a green mindset guide Iris Ceramica's evolution.

Emilio Mudrak, UK Agent – Iris Ceramica Group

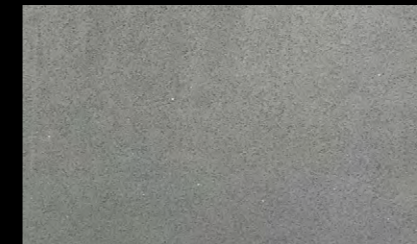
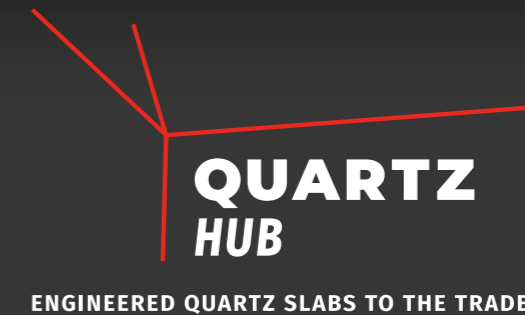
#### 15:35– 5:50 Façades for a brighter future

Balancing technical performance with superior aesthetics in the façades of the future.

Aaron Capon, Façades Manager – Cosentino

#### 15:50–16:00 Q&A and panel discussion

Joe Simpson, Laurens Van Graafeiland, Emilio Mudrak, and Aaron Capon, address questions about greenwashing, environmental standards, embodied energy, raw materials, and renewables in an era of heightened awareness of construction's ecological impact.



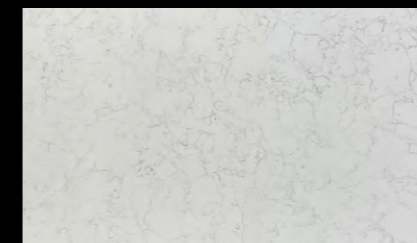
Grey Diamond Mirror from £300 a slab



Black Marquina from £595 a slab



Calacatta Platinum from £575 a slab



Carrara Classic from £385 a slab



Calacatta Light from £525 a slab



White Diamond Mirror from £300 a slab

### UK based suppliers of engineered quartz slabs to the trade throughout mainland UK

#### Over 30 years' experience in the industry

- ▶ Quick and Reliable Express Delivery Service
- ▶ FREE delivery available to mainland England, Scotland and Wales
- ▶ Prices frozen till at least September 2023
- ▶ Discounts for cash on delivery and flexible sale or return service available
- ▶ 100% confidentiality
- ▶ All slabs 3200mm x 1600mm Jumbo size
- ▶ No quibble life-time warranty on all slabs

Based in the West Midlands, Quartz Hub supplies engineered quartz slabs to the trade across the UK. From their extensive warehouse, Quartz Hub are quickly building up a reputation in the industry for great quality, great price and great service.

The friendly team consisting of Rob, Ben and Emma, are on hand to look after all of your procurement needs. The current range consists of 15 top selling colours and each slab is supplied unbranded so you are able to brand them if you choose to do so.

Orders are quickly dispatched using their 4-tonne gantry crane onto one of a fleet of available vehicles capable of carrying payloads of up to 28 000kg. HIAB lorries are also available upon request.

Quartz Hub offer an Express Delivery service around the Midlands and surrounding areas with next day delivery very often being available.

**Sales agents required to join our rapidly expanding team – please contact us for details.**

**Competitive rates of commission offered.**



Quartz Hub Ltd

Unit C, Atlas Trading Estate, Wolverhampton, West Midlands, WV14 8TJ

Tel: 01902 957775 | WhatsApp: +447834374181 | info@quartzhub.co.uk | www.quartzhub.co.uk

## Archiporcelain

H 35

15 Northfields Prospect  
Northfields  
London  
SW18 1PE  
☎ +39 347 455 3849  
[eciprogetti@gmail.com](mailto:eciprogetti@gmail.com)

Mike Quattrini

Archiporcelain is agent for some of the leading Italian manufacturers of porcelain tiles and paving. With 25 years' experience, it can help you select the right products to grow your revenue and profits.

## Arklam

G 9

Pentagon House  
Harolds Road  
The Pinnacles  
Harlow  
CM19 5BJ  
☎ 01279 626662  
[sales@pentagon-tiles.co.uk](mailto:sales@pentagon-tiles.co.uk)  
<https://arklam.com>

See representatives on the stand

Arklam, represented by Pentagon Tiles, is a large-format sintered stone created specifically for the most exclusive and demanding projects. Arklam Supersize is made up of two clearly differentiated product lines based on their thickness and applications: Arklam Countertops 12 and 20mm, aimed at the kitchen channel; and Arklam 3 and 6mm, with multiple possibilities for architecture and design.

## Artemistone

F 6

17 Suez Road  
Enfield  
London  
EN3 7SN  
☎ 020 8432 8170  
[info@artemistone.com](mailto:info@artemistone.com)  
[www.artemistone.com](http://www.artemistone.com)

See representatives on stand

Artemistone is a globally renowned company that sources fine materials and the latest designs, ensuring a wide range of textures and colours are distributed worldwide. With over a decade of experience, the company prides itself on providing excellent service, reliability, and compatibility with its diverse clientele. A speciality is handling prestigious surfaces used in homes, including Calacatta and Carrara quartz. The company is committed to excellence and expertise.



Arklam (G9), represented by Pentagon Tiles, has been created for exclusive, demanding projects.

## Ascale Tau

H 26

Old Airfield  
Matching Green  
Harlow  
CM17 0RN  
☎ 01279 939081  
[info@graniteslabsuk.co.uk](mailto:info@graniteslabsuk.co.uk)  
[graniteslabsuk.co.uk](http://graniteslabsuk.co.uk)

See the team on the stand

Ascale is the result of over half a century in the ceramic sector. Its sintered slabs are available in 6, 12 and 20mm thickness and it has a product portfolio including all types of marble, cement, stones, woods, metals and essential minerals.

Ascale slabs have high and low temperature resistance, anti-staining and cut resistance, making them the perfect choice for any type of project.

## AVA Stone

H 16

Via Emilia  
Ponente 2070  
Castel Bolognese  
(RA) 48014  
Italy  
☎ +39 348 428 3316  
[vincenzoverrascina@lafabbrica.it](mailto:vincenzoverrascina@lafabbrica.it)  
[www.lafabbrica.it](http://www.lafabbrica.it)

Vincenzo Verrascina, Stuart Brown

Two thicknesses, two finishes and numerous aesthetic proposals in the range for many design requirements. Ava Stone offers a wide range of slabs with a marble, stone or textural effect for the most varied design projects. The company says it is the excellence factor that distinguishes it at every stage, from the design of the product to the research laboratory, in the production process, right up to marketing.

Ava Stone says its avant-garde collections are developed through advanced technologies, allowing it to meet the most complex technical needs of architecture and interior design with Made in Italy style and elegance, providing maximum freedom of

expression in a style-consistent way with the floor and wall tiles to create kitchen worktops, islands, tables, living areas and bathrooms.

## Avesta Stone

H 39

Seyrantepe Sanayi mah. Elazig Blv.  
Çeysa Twin Towers C blok no 47 iç Kapi No 46  
Yenisehir  
Diyarbakir  
Turkey  
☎ +90 535 415 4665  
[info@avestastone.com](mailto:info@avestastone.com)  
[www.avestastone.com](http://www.avestastone.com)

Hevy Acar

Avesta Stone has been a leading brand of its sector and one of the leading companies of the country since 2008. It supplies materials both in Turkey and abroad.

## BBS Brick and Stone Ltd

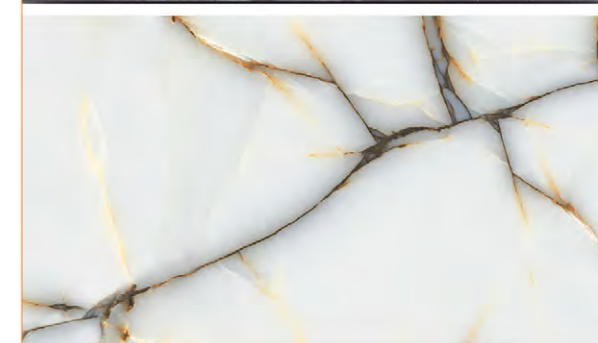
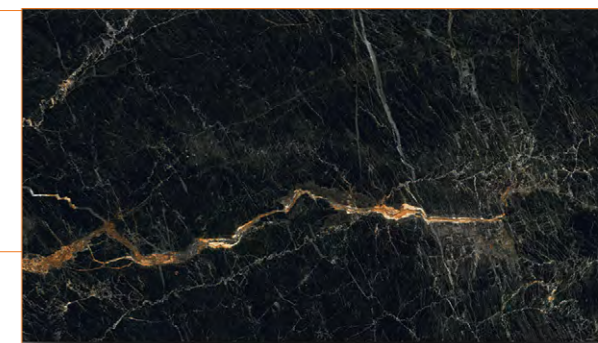
H 20

Wharfe House  
Wharfebank Mills  
Ilkley Road  
Otley  
West Yorkshire  
LS21 3JP  
☎ 01924 241100  
[sales@bbsnaturalstone.com](mailto:sales@bbsnaturalstone.com)  
[www.bbsnaturalstone.com](http://www.bbsnaturalstone.com)

Phil Waite, Brian Kelly, Sam Phillips, Josh Waite

BBS is a privately-owned company that has been supplying natural stone and associated products for

From Avesta Stone (H39) comes (top to bottom) Orion Black F4, Arch Anthracite F1, and Crystal Ice.



## Worktop Fabricators Federation

I 50

With silica dust hazards currently grabbing the headlines at home and abroad, the Worktop Fabricators Federation's mission to raise standards, maintain margins, professionalise the industry and share best practice has never been more relevant.

With so much concern across the industry about the risks associated with respirable silica dust, the Worktop Fabricators Federation (WFF – Stand I 50) has taken the initiative to demonstrate how seriously professional fabricators take their responsibilities to their workforce by investing in a state-of-the-art Trolex Air XS silica dust monitoring machine for the benefit of its members.

Trolex Air XS uses X-ray diffraction technology to differentiate between silica dust and other airborne dusts.

Over the course of the next 12 months, WFF members will be invited to place the monitor in their own premises, enabling the Federation to build up a unique body of evidence that maps background dust readings to personal monitoring results.

The process should also help business owners understand the effects of variables such as open doors and heating equipment, or undertake

before-and-after analysis when moving items of plant or installing new machines.

Fabricators visiting the WFF stand at Hard Surfaces will be able



to discuss the fruits of the first trials, being undertaken at one of the WFF Directors' own factories.

This entails positioning the Air XS in three or four different places around the workshop and measuring the dust over a 4-8 hour period.

WFF expects to have the data available at the show along with a diagram of the workshop

showing where the unit was located and the results from each location. This will hopefully show the worst locations and the impact of any other variables such as open doors.

"The whole idea is for each fabricator to understand their situation regarding dust as a starting point and to be able to formulate an action plan to reduce it further," says WFF Director Mark Mills.

"Members will then have hard evidence to create their own action plan to improve whatever results they get, and then test again with the same equipment in the same location to see what difference any changes make."

For those visitors less interested in the intimacies of factory management, WFF is showcasing its important *Guide to Engineered and Natural Stone Surfaces*.

This unique, industry-authored overview enables interior designers, kitchen showrooms and specifiers to understand the comparative strengths and weaknesses of different worktop materials, helping everyone to get it right first time and appreciate the balance of value and cost, especially with some of the more recently introduced materials.

over 30 years. It assists from initial concept through CAD design and manufacture to final installation on site.

It provides an extensive range of materials, focusing on an ethical supply chain with sustainability being key to its selection of stones and partners. It offers: Yorkstones, limestones and Caithness stone from the UK; granite and porphyry from mainland Europe, and granite and sandstone sourced worldwide.

On the stand it is displaying products from its natural stone range, including the company logo in large granite letters. Two screens will be running slideshows of its jobs, materials and quarries.

## Bestile

G 36

Ptda la Torreta s/n  
Alcora  
Castellon 12110  
Spain  
☎ +34 647 074041  
[ruben@bestile.es](mailto:ruben@bestile.es)  
<https://en.bestile.es/>

Meet the representative on the stand

Bestile is a Spanish manufacturer of sophisticated ceramic designs that prioritise total quality and customer satisfaction. The company says it is dedicated to delivering the best quality, design, and innovation in every product it offers. Its ceramics are designed to be both aesthetically pleasing and functional, catering to the demands and desires of its customers. Bestile takes pride in its high-quality manufacturing processes and innovative designs that have earned recognition worldwide.

Through continuous research and development, Bestile has earned the prestigious Alfa de Oro prize four times. The company remains committed to delivering high-quality products and services to customers all over the world, and continuing to pursue excellence through a creative approach and dedication to innovation.

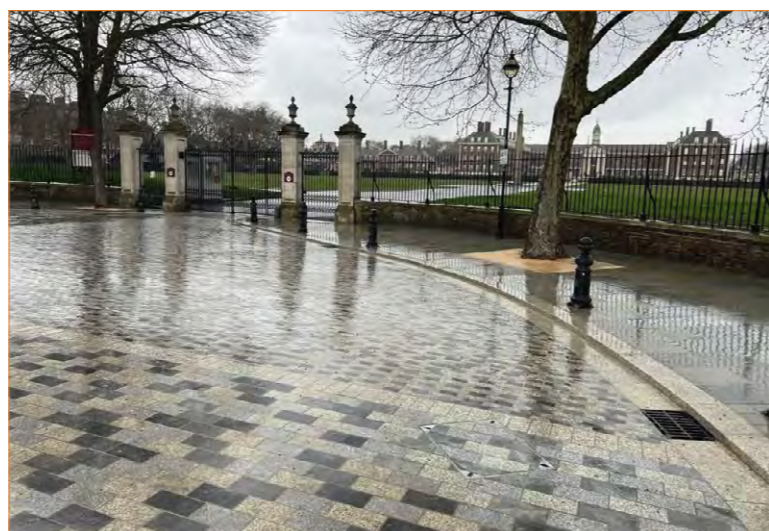
## Big Slabs by Nuovocorso

I 1

Via Mulini Valle Tresinaro, 11  
Carpineti  
RE 42033  
Italy  
☎ +39 0522 175 7111  
[info@nuovocorso.it](mailto:info@nuovocorso.it)  
<https://nuovocorso.it/en/>

See the team on the stand

Big Slabs by Nuovocorso are porcelain stoneware in large format – 160cm x 320cm. The slabs are offered in a large variety of designs and textures in thicknesses of 20mm, 12mm and 6.5mm, suitable for all intended uses – furniture (countertops, tables, sinks), floor and wall coverings, both indoor and out, and ventilated facades.



Portuguese granite from BBS Brick & Stone (H20) at Thames Tideway.

## Ceramiche Caesar Spa

G 40

Via del Canaletto, 49  
Fiorano Modenese  
(MO) 41042  
Italy  
☎ +39 0536 817111  
[info@caesar.it](mailto:info@caesar.it)  
[www.caesar.it/en](http://www.caesar.it/en)

Mr Marco Zagnoli, Mr Andrea Boido

Ceramiche Caesar's vocation for materials, in particular porcelain stoneware, has been guiding its work, its thoughts and its actions since the company was established in 1988.

Its developments create ceramic surfaces that work towards the best in terms of technical performance and aesthetics. Its ceramics are an invaluable tool for technicians, architects and designers. The culture of material combines with technology and gives life to values that, since 1988, have defined the work Ceramiche Caesar.

## Clay International

I 20

Hub 1, Unit 29  
Wimbledon Stadium Business Centre  
Riverside Road  
London  
SW17 0BA  
☎ 020 89717948  
[info@clayinternational.co.uk](mailto:info@clayinternational.co.uk)  
<https://clayinternational.co.uk>

Louis Livramento (Director), Sherrie Knight (Sales manager), Sadi Kilinch (Sales), David Mason (Sales), Alice Curran-Stockwell (Office manager)

Clay International says it is the surfaces company that cares. It specialises in the supply and distribution of large format Infinity porcelain slabs, which are produced in Italy. Clay International says it is backed by unrivalled expertise and outstanding customer service.

## Coverlam Top by Grespania

G 60

302 Hollymoor Way  
Rubery  
B31 5HE  
☎ 07854 597891  
[fmalo@grespania.com](mailto:fmalo@grespania.com)  
[www.coverlambygrespania.com](http://www.coverlambygrespania.com)

See representatives on the stand

Coverlam Top is an innovative product made from natural raw materials with exceptional mechanical and aesthetic properties. Coverlam Top can also meet the most demanding needs of the home in terms of resistance to heat, chemicals and damp stain. In addition, thanks to its minimal porosity, it is a hygienic, antibacterial surface ideal for food preparation.

## Diamik Glass Ltd

G 65

Unit 1 Aneal Business Centre  
Cross Green Approach  
Leeds  
LS9 0SG  
☎ 0113 249 7001  
[info@diamik.co.uk](mailto:info@diamik.co.uk)  
[www.diamikglass.co.uk](http://www.diamikglass.co.uk)

See Mick and team on the stand

Diamik will be presenting the new 2023 range of Ecorok sustainable surfaces, manufactured using a minimum of 85% waste glass. Ecorok is now an established, sustainable option for any surface. The new designs feature new colours and the latest glass options received from a network of local suppliers in Yorkshire. Diamik is proud to be a member of the 'Made in Britain' team, carrying out all aspects of production in its factory in Leeds. Rainfall capture from office and factory roofs and the recycling of production water is all part of the Ecorok sustainable brand. Ecorok is a hand-crafted product manufactured using no direct energy, which the company says justifies its claim to be one of the lowest carbon footprint surface products available.

## Erol Marble

G 26

Eski Hamam Mh. Ankara Afyon Karayolu Cd. No:22/1  
Iscehisar  
Afyonkarahisar  
Turkey  
☎ +90 531 770 1383  
[info@erolmarble.com](mailto:info@erolmarble.com)  
[www.erolmarble.com](http://www.erolmarble.com)

Erol Yilmaz

Erol Marble was founded in 2013 as Erol Yilmaz. It became Erol Marble Maden San.tic Ltd.şti by changing its name in 2020 and continuing its commercial life. This year, it has bought a marble quarry of its own. It exports almost all of the marble and other stone it processes.



Iron in the new Distrito series of Coverlam Top by Grespania (G60).

## Etonsurfaces Inc

G 59

Empire State Building, 41st Floor  
350 5th Avenue  
New York 10118  
United States  
☎ +1 917 566 1341  
[luca.verde@etonsurfaces.com](mailto:luca.verde@etonsurfaces.com)  
[www.etonsurfaces.com](http://www.etonsurfaces.com)

Luca Verde

Etonsurfaces sells cement-based products in new forms that blend aesthetics and technology, while paying particular attention to promoting an eco-sustainable product. It will supervise projects, accompanying installers, contractors and architects in every phase. Its expertise comes from years of experience in the natural stone world, interacting with architects, project owners and stone processors.

## Ferrari & Cigarini UK

H 27

Unit 4A Stretton Distribution Centre  
Off Grappenhall Lane  
Appleton  
Warrington  
WA4 4QT  
☎ 01565 750666  
[sales@aquacut.co.uk](mailto:sales@aquacut.co.uk)  
[www.ferrari-cigariniuk.co.uk](http://www.ferrari-cigariniuk.co.uk)

Meet the representative on the stand

Ferrari & Cigarini specialises in the design and manufacture of machines and production plant for those operating in the porcelain, stone, brick, and glass industries. The company offers a wide range of machines from on-site cutting and profiling to large industrial machines offering a wide range of functions. Aquacut Ltd is Ferrari & Cigarini's UK distributor.

## Foshan Cera Power Ceramics Co Ltd

I 10

#1 Building 12  
Casa Ceramics and Sanitary Ware mall  
Foshan  
Guangdong 528000  
China  
☎ +86 575 8256 0260  
[sales@vivaquartzstone.com](mailto:sales@vivaquartzstone.com)  
[www.vivaquartzstone.com](http://www.vivaquartzstone.com)

Meet the representative on the stand

Foshan Cera Power Ceramics Co Ltd is a leading building materials enterprise with nearly 20 years experience. Viva Quartz Stone as its wholly owned subsidiary focusing on engineered quartz, made from 100% natural quartz and resins from world renowned brands, strictly in adherence to the 93% quartz and 7% resin proportions as raw materials to guarantee top quality quartz slab. The company's machinery is from global brand Keda, and with nine production lines, Foshan Cera Power Ceramics has a production capacity of 60,000m<sup>2</sup> per month. Viva aims to be a leader in the market by adhering to brand principles in order to supply its products for starred hotels, shopping malls, high-end office buildings, home decoration and high quality kitchen enterprises. It says it offers first-class quartz and services to turn a new page of ecological building materials.

## Granite Slabs UK

H 26

Old Airfield  
Matching Green  
Harlow  
Essex  
CM17 0RN  
☎ 01279 939081  
[info@graniteslabsuk.co.uk](mailto:info@graniteslabsuk.co.uk)  
[graniteslabsuk.co.uk](http://graniteslabsuk.co.uk)

Granite Slabs UK is a leading distributor of fine marble, granite, quartzite and quartz in the UK. It provides high-end materials to some of the industry's best known stonemasons and prides itself on having a large selection of materials, on site at its yard in Harlow, Essex, where customers can come and choose their dream slabs for themselves.

## Guangdong Bosun Stone Co Ltd

I 56

The International Stone Town  
Yunfu City 527300  
China  
☎ +86 766 858 8738  
[danny@bosunstone.com](mailto:danny@bosunstone.com)  
[www.bosunstone.com](http://www.bosunstone.com)

See representatives on stand

Guangdong Bosun Stone Co Ltd was established in 2016 for the production, research & development and

sales of quartz stone. The company has a technologically advanced production base covering 50,000m<sup>2</sup>. Its R&D department, with more than 10 years' experience and abundant capital, has enabled it to build a large and advanced quartz stone production operation offering top quality products.

Setting trends since it was established, Bosun continues to develop new technologies, several patented, and each year launches a novel palette of colours and patterns according to international fashion trends. Its products are exported to Europe and more than 30 other countries and regions, where it has long-term relationships with well-known wholesalers, cabinet companies and architectural design companies.

Bosun quartz slabs have as much as 93% quartz content (on average they are seven on the Mohs hardness scale), giving it a strength and texture similar to natural stone. The company describes Bosun quartz as a combination of nature, technology and art.

## Guangzhou Vidastone Ltd

H 40

m2210 Poly-Plaza Clover  
No.9 Huaqiang Road  
Zhujiang New Town  
Guangzhou 511466  
China  
☎ +86 136 1022 4523  
[jason@quartzstone.com.cn](mailto:jason@quartzstone.com.cn)  
<https://vidastone.com>

See representatives on stand

VidaStone is one of the longest established leading manufacturers of engineered quartz in China, having been in production since 2006.

With over 17 years' experience and four advanced technology production lines producing 48,000m<sup>2</sup> a month, the company supplies more than 100 colours, including some made specifically to customers' own designs. Consistent high quality, competitive prices, stylish designs and a high level of customer service have given VidaStone a reputation that has enabled it to sell successfully to more than 40 countries, including the UK. It looks forward to building up more long-term professional business relationship with customers from all around the world.

## Hard Surfaces 2025

I 58

7 Regent Street  
Nottingham  
Nottinghamshire  
NG1 5BS  
☎ 0115 865 8283/ 07969 813250  
[hardsurfaces@qmj.co.uk](mailto:hardsurfaces@qmj.co.uk)  
[www.hardsurfaces.co.uk](http://www.hardsurfaces.co.uk)

David Fisher, Charlotte Stacey

The only event dedicated to hard surfaces industry in UK and Ireland returns to ExCeL, London 3-5 June 2025. Reserve your stand at the 2025 event on stand P68 where you will find representatives of the Hard Surfaces team.

## Ina Natural Stone

G 18

Suleyman Demirel Organize Sanayi Bolgesi 104.Cad  
No:5  
Isparta  
Turkey  
☎ +90 246 556 5155  
[export@inanaturalstone.com](mailto:export@inanaturalstone.com)  
[www.inanaturalstone.com](http://www.inanaturalstone.com)  
Arif Hilal

Ina Dogaltas provides a wide range of products from slabs to cut to size. Its priority is to work with companies on projects by offering project solutions with excellent service. It has two factories that enable it to produce materials that meet with client expectations.

## Infinity – The Engineered Stone

I 20

Hub 1, Unit 29  
Wimbledon Stadium Business Centre  
Riverside Road  
London  
SW17 0BA  
☎ 020 89717948  
[Paloma@clayinternational.co.uk](mailto:Paloma@clayinternational.co.uk)  
<https://clayinternational.co.uk>

Louis Livramento (Director), Sherrie Knight (Sales manager), Sadi Kilinch (Sales), David Mason (Sales), Alice Curran-Stockwell (Office manager)

Represented by Clay International, which specialises in the supply and distribution of large format Italian Infinity porcelain slabs.

Marble and travertine from Kar-Mar Madencilik (G20).



## Italian Luxury Surfaces Ltd

H 25

Unit 2, Stacey's Yard  
Station Road  
Langley  
Berkshire  
SL3 6DB  
☎ 01753 314444  
[office@italianluxurysurfaces.co.uk](mailto:office@italianluxurysurfaces.co.uk)  
[italianluxurysurfaces.co.uk](http://italianluxurysurfaces.co.uk)

James Price

Italian Luxury Surfaces is a family-run business supplying quartz, composite stones and natural stones to the fabrication and design sectors. The ethos of Italian Luxury Surfaces has always been to select high-quality slab materials and natural stone from around the world and ship directly from Verona, Sicily and other locations to fabricators in the UK.

The company is the official UK distributor for Stone Italiana, with its leading quartz and innovative recycled material Cosmolite – a high-tech slab material made from inert components 100% derived from recycled minerals. Stone Italiana has its own stand (I26) at the Natural Stone Show.

Visit the Italian Luxury Surfaces stand to speak to the company's natural stone procurement manager and find out more about how it can source special, hard-to-find and appealing natural stones for your clients and deliver them directly to you at your fabrication business.

## Kar-Mar Madencilik

G 20

Seydiler Beldesi Hasanbasri Mh. Koru Street. No:31  
3750 Iscehisa  
Afyonkarahisar  
Turkey  
☎ +90 537 487 78 47  
[bilgi@cetinkayalartermer.com.tr](mailto:bilgi@cetinkayalartermer.com.tr)  
[www.cetinkayalartermer.com.tr](http://www.cetinkayalartermer.com.tr)

Hasan Cetinkaya

Kar-Mar Mining was established in Seydiler in 1985 and operates in the marble sector, in the fields of marble, beige and travertine.

## Keope Ceramiche by Cristian Garofalo

G 1

S.S.467, 21 Casalgrande  
(RE) 42013  
Italy  
☎ +39 0522 997511  
[info@keope.com](mailto:info@keope.com)  
[www.keope.com](http://www.keope.com)

Mr. Cristian Garofalo

Ceramiche Keope is a renowned manufacturer of porcelain stoneware floor and wall tiles. Starting in

1995 in Casalgrande, it has grown to reach a yearly production of more than 5million square metres of ceramics, selling its products in over 80 countries. Ceramiche Keope offers high standards of design and technical performance, ideal for interiors and exteriors in commercial, public and residential spaces. The company is part of Gruppo Concorde, a leading European ceramics group, sharing its values of reliability, honesty and care for people and the environment. Constant commitment to improvement of all stages of production, research, and resources, and to meet demanding design requirements have given Keope Ceramiche its success over the years.

## Malbros Marbles & Granites Industries

H 36

Head Office: Malbros Building  
C - 51, Preet Vihar  
Vikas Marg  
New Delhi 110092  
India  
☎ +91 98100 14715  
[export@malbros.com](mailto:export@malbros.com)  
[www.malbros.com](http://www.malbros.com)

Arun Malhotra, Sunil Malhotra, Nikita Malhotra, Shiven Malhotra

Malbros is recognised as one of the leading stone exporters of India. It is certified with ISO 9001:2015, ETI Base Code, ISO 14001:2015, OHSAS 18001:2007 and CE Certified for Europe. It is the recipient of 51 Export Awards, 35 from Capexil, from the central Government of India, and 16 from state and other authorities. Malbros produces various artificial quartz slabs in sizes of 3500mm x 1980mm and 3200mm x 1600mm and thicknesses of 20mm and 30mm. It also supplies natural stone, including slate, sandstone, limestone, quartzite, marble and granite, as tiles, slabs, mosaics, ledger panels / corners, flagstones, paving and other landscaping products.

## Marmox UK Ltd

G 48

Caxton House  
101-103 Hopewell Drive  
Chatham  
Kent  
ME57NP  
☎ 01634 835290  
[sales@marmox.co.uk](mailto:sales@marmox.co.uk)  
[www.marmox.co.uk/slicedstoneveneer](http://www.marmox.co.uk/slicedstoneveneer)

Grant Terry, Jonathan Parsons, David Newell

New to Marmox UK in 2023 is Slicedstone Veneer, ultra-thin, flexible sheets in 13 natural stones. Peeled from the surface of Indian sedimentary rock and then re-engineered with a stabilised backing fleece, Marmox Slicedstone Veneers are a practical and cost effective alternative to conventional, thicker cut stone tiles. The surface of each sheet is treated with a clear, polycarbonate solution to create a stable surface that is waterproof, stain resistant and allows for the easy removal of adhesive and grout. Slicedstone Veneers can be used to cover any wall and to enhance furniture and doors. The sheets can curve around circular walls or columns and because they are waterproof they are a great way to liven up bathrooms, wetrooms and shower areas. They can also be used outdoors. They are available in sizes: 1220mm x 610mm, 2100mm x 1050mm and 2400mm x 1050mm.

## Natural Stone Concepts

G 46

1-202 G CK Nagar Colony  
Markapor  
Andhra Pradesh 523316  
India  
☎ +91 944 0265532  
[naturalstoneconcepts@hotmail.com](mailto:naturalstoneconcepts@hotmail.com)  
<http://naturalstoneconcepts.in>

G.V. Koti Reddy

Natural Stone Concepts offers natural stones such as slate, limestone, sandstone and granite for paving and landscaping. It also offers an enticing range of porcelain for exteriors with the Stone Edge collection.

## Noble Stone

I 9

North Compound  
Wembley Commercial Centre  
London  
HA9 7UR  
☎ 0333 577 6063  
[info@noblestone.uk](mailto:info@noblestone.uk)  
[www.noblestone.uk](http://www.noblestone.uk)

Mohammad Tabrizian

Noblestone UK is a distributor of high-quality quartz surfaces and engineered stones. The company is based in the United Kingdom and works with leading manufacturers in the quartz industry across the world. Noblestone UK prides itself on exceptional customer service and technical expertise, working closely with architects, designers, fabricators, and homeowners to help them select the perfect quartz surfaces for their projects.

## Northern Precision Ltd

H 30

Unit 3 Durham Lane  
Armthorpe  
Doncaster  
South Yorkshire  
DN3 3FE  
☎ 01302 836010  
[sales@npfasteners.com](mailto:sales@npfasteners.com)  
[npfasteners.com](http://npfasteners.com)

Meet the representative on the stand

Northern Precision is a leading supplier of fasteners. It offers its customers a total package of fasteners, installation equipment, special parts and technical back up it believes is second to none. Northern Precision supplies fasteners for use in solid surface materials and stone, composites and sandwich panels.

The latest addition to the range stocked is a new two part snap on / pull off fastening system called Fast-Con. It joins a comprehensive range of fasteners and both hand and power tooling to install the fasteners.

Northern Precision supplies fixing systems for electronics, white goods, the automotive industry, aerospace applications and general sheet material uses.

It has an extensive range of parts available from stock, including the full range of self-clinching fasteners, nuts, studs, ►



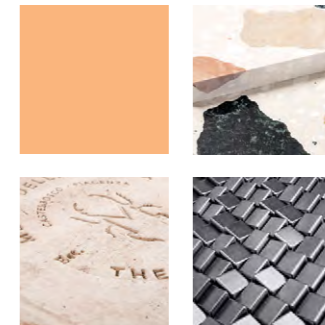
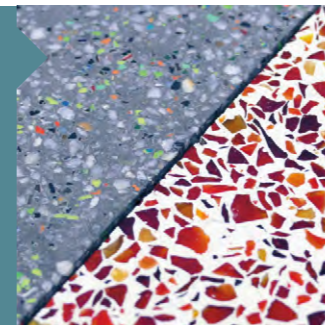
<https://materialdistrict.com>

## Sustainability Meets Design

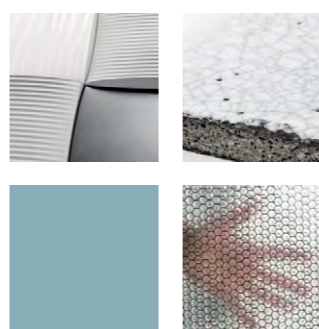
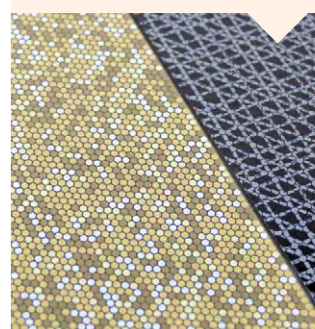
We're delighted to announce that MaterialDistrict is once again at Hard Surfaces with its unique, curated experience featuring more than 100 innovative and sustainable materials.

*Sustainability Meets Design* explores the latest advances in hard surface development through the lens of sustainability and the challenges and techniques for smarter ways to add that wow-factor to construction.

The innovation in **Huguet Recycled Terrazzo** comes not from the process, which remains as traditional as it has always been, but from the aggregates (traditionally marble dust), which in this case are replaced by recycled glass or pieces of Nike shoe soles. Totally unique, it is a product which is expected to last a hundred-years and is always repairable.



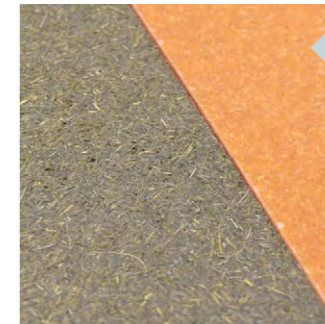
Dot is the first collection in **Solarix Colours**, an extensive selection of energy-generating façade panels which pay attention to the correct structure and materialisation of the colours in combination with high energy yields. In their quest for a vibrant colour experience, the Solarix design team was inspired by the structure of textiles, in which different shades, colours and yarns are combined for depth perception.



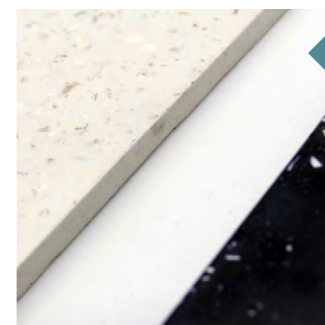
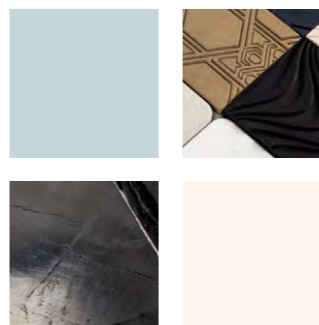
**Common Sands – Forite** evolved as a collaborative research project between Studio Plastique and Snohetta, with the aim of exploring the potential applications of recycled E-waste glass. This led to the development of a process to create glass tiles using recycled glass from microwave ovens. The tiles have been developed in two different sizes and are available as both opaque and transparent, each with a unique pattern and expression.



**BioBasedTiles** are the first ever tile that grows with the help of bacteria. The concrete tiles, using Biocement developed by Biomason, have one of the lowest carbon footprints on the market. Biocement combines carbon and calcium to produce a biologically formed limestone material consisting of approximately 85% granite from recycled sources, and 15% biologically grown limestone. Growing in less than three days, these tiles are 20% lighter than a concrete block, but three times stronger.



After **Ottan** gathers all kinds of natural wastes – such as fruit peels, expired grains and garden waste – it cleans, dries and grinds them before mixing them with green resins and injecting them into moulds to create multi-purpose products. Each of the materials produced upcycles an average of 65-85% organic waste. Ottan materials offer an alternative to wood, acrylic and marble. They do not contain any colourants or additives but reflect the characteristics of the waste they are made from.



6-8million metric tonnes of shell waste are generated by the food industry every year. Most of it ends up in landfill, but it can be used in **Molelk**, a composite material that's made of recycled shell and seafood waste from the fishing industry, giving it a new lease of life on land. With its subtle, soft, muted tones, the waste material works as a natural aggregate with neutral or bright base colours to make Molelk ideal for small or large-scale surfaces such as table tops and furniture.

You've got to see it... touch it... experience it to believe it

Visit the gallery in zone I40



standoffs, floating nuts, panel fasteners, locking clinch nuts, mini clinch nuts, high strength clinch studs and PCB fasteners. It also offers rivet bushes, rivet nuts, blind rivets and weld fasteners. And it manufactures special bespoke turned & cold-formed parts to suit customers' individual requirements.

All its products are fully RoHS compliant and it offers customers push-out and torque-out tests on their own materials to ensure the correct fasteners are chosen.

## Onur Marble

G 30

Yalniz Mahallesi Kapıcıy Sokak No.60  
Finike  
Antalya  
Turkey  
☎ +90 242 852 51 40  
[info@onurmarble.com](mailto:info@onurmarble.com)  
[www.onurmarble.com](http://www.onurmarble.com)

Efdal Ciftci

Onur Marble is a leading producer with quarries in different parts of Turkey. It supplies many different stones, so there is a good chance it will be able to satisfy the requirements of your projects. It has a modern factory equipped with the latest Italian technology gang saws and resin line. It can supply slabs, cut to size and masonry for large and medium sized projects.

## Paving Stock

H 60

20-22 Wenlock Road  
London  
NI 7GU  
☎ 0203 2393242  
[info@pavingstock.co.uk](mailto:info@pavingstock.co.uk)  
[www.pavingstock.co.uk](http://www.pavingstock.co.uk)

Mukesh Jain, Abhi Maithil

Paving Stock is a leading supplier of 20mm outdoor porcelain, sandstone, limestone, granite and slate paving all over the UK. Importing more than 500 containers, it holds ready stocks of porcelain, sandstone, limestone and granite paving throughout the year for instant delivery. And it promises particularly competitive prices.

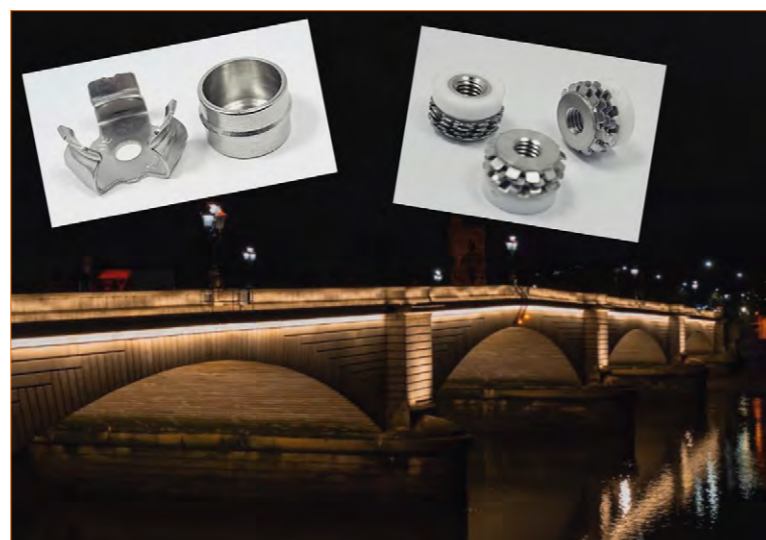
## Peakson Quartz Surface

H 10

Dongan Avenue South  
Liudu Town  
Yunan District  
Yunfu  
Guangdong Province 527500  
China  
☎ +86 1501 250 7628  
[Sales001@peaksonstone.com](mailto:Sales001@peaksonstone.com)  
[www.peaksonstone.com](http://www.peaksonstone.com)

See representatives on stand

Peakson has a sophisticated quartz surface factory that it bought in 2015, inheriting 15 years of quartz



Fasteners from Northern Precision (H30) are keeping the lights on at Putney Bridge in London.

surface manufacturing expertise. Peakson expanded and has opened a second factory, equipped with the latest machinery. Its polishing line is armed with Italian polishing heads and its pressing lines are stemmed from Italian technology.

## Pentagon Tiles

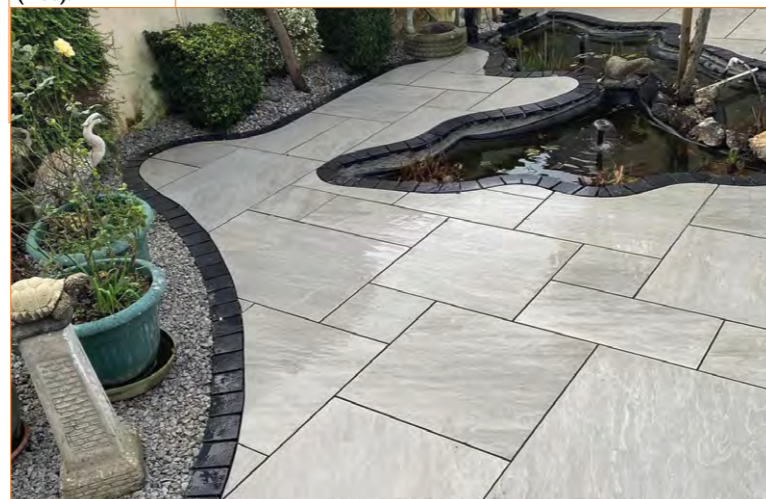
G 9

Pentagon House  
Harolds Road  
The Pinnacles  
Harlow  
Essex  
CM19 5BJ  
☎ 01279 626662  
[sales@pentagon-tiles.co.uk](mailto:sales@pentagon-tiles.co.uk)  
[www.pentagontiles.com](http://www.pentagontiles.com)

Richard Tucker

Pentagon Tiles is the slab distributor for Arklam Porcelain slabs. It is showing the Arklam materials stocked in the UK for direct purchase from the Pentagon Tiles warehouse in Essex. Pentagon stocks 20mm, 12mm and 6mm slabs across the range for collection or delivery. At the exhibition it will be presenting the latest models to be added to the UK stock.

Kandla Grey porcelain in mixed sizes from Paving Stock (H60).



## Pikaro Seramik Tasarım Uygulama Tic Ltd Sti

H 15

Acibadem Mah. Sarayardi Cad. No 30-a  
Kadikoy  
Istanbul  
Turkey  
☎ +90 216 504 3637  
[info@pikaro.com.tr](mailto:info@pikaro.com.tr)  
[www.pikaro.com.tr](http://www.pikaro.com.tr)

Mert Bahadır

The expert staff of Pikaro Tiles produce high quality hand-made tiles. Its main goal is to ensure that its unique tiles add value to living spaces and it is proud to consider itself a pioneer in its home and international markets with its aesthetically pleasing elegant designs.

## Premium Marbles & Granites Ltd

G 50

2B Anambra Crescent  
Off Nile Street  
Maitama  
Abuja  
Nigeria  
☎ +234 808 850 5988  
[info@pmg.ng](mailto:info@pmg.ng)  
[www.pmg.ng](http://www.pmg.ng)

Makoji Aduku, Seun Olakotan

Premium Marble & Granite Ltd (PMG) is a dimension stone manufacturing company with a production capacity of about 1,500m<sup>2</sup> a day in premium natural stones from its own licensed quarries. It handles everything from extraction to finished slabs and tiles with state-of-the-art equipment. The stone from the beautiful and vast natural resources of Nigeria offer a much-needed substitution for imports at home, while also growing exports to help PMG invest and expand. Its sells blocks, slabs and tiles in many sizes, thicknesses and surface finishes, with the capacity to meet large bespoke orders quickly. It says customer satisfaction is a priority. Its products are free of fractures, calibrated for perfect dimensions and environmentally quarried.

## Quarella

I 45

Via Napoleone 19  
Frazione Ponton  
Sant' Ambrogio di Valpolicella  
Verona 37015  
Italy  
☎ +39 045 829 0600  
[ezanetti@quarella.com](mailto:ezanetti@quarella.com)  
[www.quarella.com](http://www.quarella.com)

Laura Testoni

Quarella is an Italian manufacturer of marble- and quartz-based products made of natural stone selected



Quartz surfaces from Peakson (H10), which has been so successful it has opened a second factory.

from high quality Italian and worldwide quarries. It is internationally known for creations that encompass the beauty of nature with top quality performance and for a constant drive towards innovation and research in the field of sustainability.

Quarella specialises in both large-scale projects and distribution, with a deep-rooted and presence worldwide with products, finishes and interior design solutions for flooring, wall coverings, worktops and decorative contemporary elements representative of the Italian lifestyle. The experience of the company is combined with dedicated high-level technical support.

## Rielli Giancarlo Srl

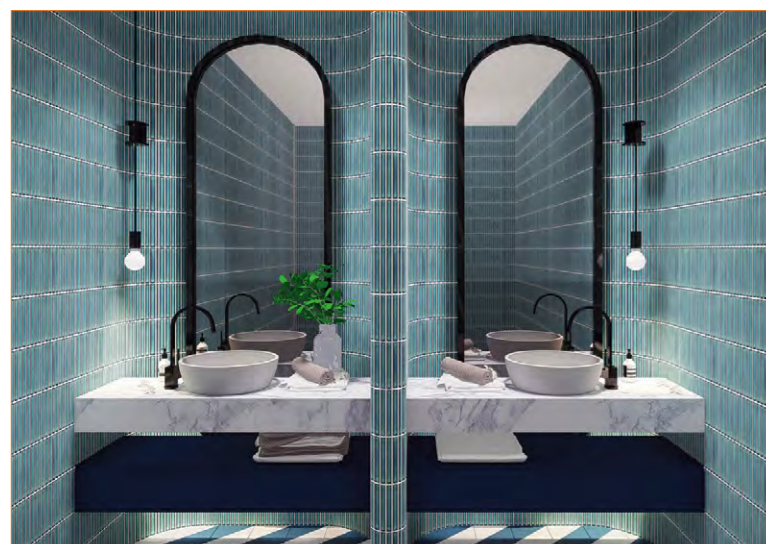
G 10

Via Esterna 921  
Lucca  
Seravezza  
Toscana 55047  
Italy  
☎ +39 3333144502  
[info@rielligiancarlo.it](mailto:info@rielligiancarlo.it)  
[www.rielligiancarlo.it](http://www.rielligiancarlo.it)

Matteo Pelletti

Rielli Giancarlo was formed in 1962 and has been supplying natural stone projects in the residential, commercial and public sectors ever since.





Handmade ceramic tiles from Pikaro (H15).

## Spectra Stone

H I

17 Grosvenor Gardens  
Westminster  
London  
SW1W 0BD  
☎ +44 (0) 207 7000 222  
info@spectra-stone.com  
www.spectra-stone.com

Lynn Lavenac, Holly Skousbo

Excellence, luxury and exclusivity underpin Spectra Stone, defying the ordinary and making its clients' quests for greatness a reality. Spectra sources, engineers, finishes and fits natural and semi-precious stone. It offers access to exclusive stone collections, fusing the latest technology and time honoured craftsmanship to produce endless possibilities of natural stone.

## Stone Italiana

I 26

Unit 2  
Stacey's Yard  
Station Road  
Langley  
Berkshire  
SL3 6DB  
☎ 01753 314444  
office@italianluxurysurfaces.co.uk  
http://stoneitaliana.co.uk

Meet representatives on the stand

At the show, Stone Italiana will be presenting the 100% recycled slab material, Cosmolite, in six new colourways being seen in the UK for the first time. Cosmolite is made from inert materials 100% derived from pre-consumer recycled minerals other than quartz – even part of the polymeric binder originates from renewable vegetable sources. Stone Italiana is a leading quartz and composite surface manufacturer based near Verona, Italy, formed in 1979, it has made its mark with a creative approach to producing engineered quartz,

developing Cosmolite in 2020. Emulating nature's uniqueness, originality and variety, Stone Italiana's slabs are supplied in various sizes and thicknesses for a wide range of uses. Stone Italiana materials are available in the UK through Italian Luxury Surfaces Ltd (on stand H25).

## Stylib Ltd

P 60

46 The Reddings  
London  
NW7 4JR  
hello@stylib.com  
https://stylib.com/

Noam Naveh (CEO), Adam Humphrey (BDM),  
Laiz Cogo (Marketing Exec), Soofia Fatima (Design  
Researcher)

Stylib is a material search platform for design professionals. Drop a picture of a material you want to identify on to the website and it will match it with the products of reputable suppliers. This gives back time to creatives to focus on designing. Stylib offers innovative tools and technologies to speed-up architectural product discovery and specification and streamlines the specification processes for designers. The free-to-use Stylib platform includes innovations such as cutting-edge visual search, digital shareable moodboards and your own materials library to keep track of your ideas.

## Tile & Stone Journal

E 58

Unit 1, The Old Dairy  
Great Danegate  
Eridge Green  
East Sussex TN3 9HU  
☎ 01892 752 400  
stuart.bourne@kick-startpublishing.co.uk  
www.tileandstonejournal.com

Meet the team on the stand

Tile & Stone Journal is an industry-leading publication for tiling professionals. The monthly journal contains product developments, breaking news and the latest trends from across the UK and Europe.

## Wharf Solid Surfaces

I 59

Trotton Farm  
Rogate  
Petersfield  
Hampshire  
GU31 5EN  
☎ 01730 812822  
sales@seamlessworktops.co.uk  
www.wharfworktops.co.uk

Rob Bullen, Shauna Krause-Bullen

Wharf Worktops is one of the UK's leading fabricators of acrylic solid-surfaces. The company attributes its success to a combination of genuine



Wharf Evotops from Wharf Solid Surfaces (I 59) are 24mm solid surface slabs with 44% reclaimed content diverted from landfill – better for customers; better for the planet, says Wharf.

innovation with an exceptional customer experience. Solid surface is known as a versatile product for longevity and durability, being non-porous, hygienic and non-staining without needing to be sealed or treated. It is a popular choice in countless applications. Wharf intends to take the best attributes of solid surface and create more sustainable solutions using its patent-pending Seamtec technology.

Wharf Evotops are 24mm solid surface slabs with 44% reclaimed content comprised of waste solid-surface material diverted from landfill. Wharf guarantees a colour-match, just as it does with its traditional solid surface.

Wharf Overlay is a solid-surface overlay that fits seamlessly over existing worktops, avoiding tear-out and landfill disposal – better for customers; better for the planet.

## Worktop Fabricators Federation (WFF)

I 50

4 Frodesley Hall Farm Barns  
Frodesley  
Dorington  
Shropshire  
SY5 7GA  
☎ 07366 391105  
administrator@worktopfabricators.org  
www.worktopfabricators.org

Andy Phillips, Chris Pateman

Launched in 2020, the Worktop Fabricators Federation is a non-profit organization for those using industrial fabrication methods to make worktops from natural stone and man-made hard surfaces. The Federation's objectives are to promote professionalism across the worktop fabrication and stone masonry industries, including the promotion of good working practices and policies for health and safety in the workplace. The WFF is a unified representative voice for the industry on matters of industry-wide importance.

The WFF has built a powerful peer-to-peer community of professional fabricators right across the UK and engaged the support of the leading suppliers to the sector – WFF counts ASM, Caesarstone, Cosentino, Neolith and Xtone as its Anchor Sponsors. More than a dozen further suppliers have also chipped in to help develop and broaden the WFF's reach. Sponsors range from manufacturers of machinery,

consumables and water-handling equipment to speciality slab suppliers, wholesalers, importers and quarrymasters. Together, they represent a powerful all-industry network which has become the default voice of the sector to the HSE and embarked on first-principles training initiatives to obtain blue CSCS cards for installation teams.

## Xiamen Kunma Trade Co Ltd

H 17

Unit A 508 Room, No.998  
1000, An'ling Road  
Huli District 360000  
China  
☎ +86 909 611 1899  
kunmastone@kunmastone.com  
www.kunmastone.com

See representatives on stand

Xiamen Kunmastone is certified to ISO9001. Ever since its foundation in 1992 it has concentrated on producing high quality stone products in its own factory to supply all kinds of project-specific construction products. Industrious work and successful management has allowed it to develop into a prosperous company specialising in quarrying, stone design and fabrication.

Putting quality and customer satisfaction as the priorities, Kunma Trade adopts advanced equipment and quality control system to guarantee exacting standards. It takes pride in an honest and responsible, friendly and consistent client relationship. Excellent service and co-operation is provided at every stage of interaction, from inquiry to delivery. And purchasing directly from the factory means competitive prices.

Kunma believes that with its excellent stone sources, rich production experience and superior craftsmanship, customers find it a reliable supplier and business partner.

## Xiamen Yoyo Stone Imp & Exp Co Ltd

H 29

Room 703 Huiteng Building  
321 Jiahe Road  
Xiamen City 36000  
China  
☎ +86 592 5143996  
info@yoyostone.com  
www.yoyostone.com

See representatives on the stand

Yoyo Stone combines excavation, design, processing, sales and installation. Its main products are natural stone products and artificial marble and quartz. It supplies countertops, vanities, slabs, tiles, project cut-to-size masonry, tombstones, fireplaces, stairs, columns, sculpture, fountains, landscaping stone products and more, all made to a high quality at competitive prices.