

the Natural StoneShow 2023

The UK stone industry event

Tuesday 6 to Thursday 8 June

9am - 5pm daily

EXCeL LONDON

WWW.CASDRON.CO.UK

Lithofin®

Visit us on Stand F35

The easy way
to keep
STONE
BEAUTIFUL



Now you can keep floors beautiful
the professional way.

Lithofin specialist products for natural stone, ceramic and porcelain.

Official
catalogue

This show is
supported by:



Federation
Stone
Great Britain



Historic England



stoneshow.co.uk

Join the conversation @stoneshowlondon #stoneshow2023

in
conjunction
with
Natural Stone
Specialist

PRODIM

COMPLETE DIGITAL TEMPLATING SOLUTIONS



INTEGRATE YOUR SITE PHOTOS
WITH YOUR DIGITAL TEMPLATE
FOR TOTAL PROJECT CONTROL

THE PROLINER

GENERATION X STONE PACKAGES



WWW.PRODIM-SYSTEMS.COM

PRODIM

Prodim International BV Phone: +31 492 579050

the Natural StoneShow2023

The UK Stone Industry Event

6-8 June

EXCEL
LONDON

www.stoneshow.co.uk

The **QMJ** team at ExCeL



Meet the Stone Show and Hard Surfaces organising team. They are (left to right) Dave Wright – Marketing & Social Media; Abi Smith – Assistant Event Manager; Charlotte Stacey – Exhibition Account Manager; Richard Bradbury – Show Director; David Fisher – Head of Exhibition Sales; Harvey Sugden – Event Manager.

To reserve a stand at the next in this series of exhibitions in 2025, contact Charlotte on +44 (0)115 945 4376 (charlotte.stacey@qmj.co.uk) or David +44 (0)115 865 8283 (david.fisher@qmj.co.uk).

Richard Bradbury, Managing Director:

Welcome to the 14th edition of the Natural Stone Show. We're delighted to be back at ExCeL in our new June slot, after an extended break due to the pandemic. There's so much to catch up on in the stone industry, and to reflect this we've put together more visitor features and CPD content for you than ever before.

The seminars will take place on the show floor for the first time this year. Around 50 speakers will present from dedicated Stone Show and Hard Surfaces CPD theatres. There are two particularly exciting new features this year:

One is the presentation of an Industry Choice Award from among the Stone Federation category winners in the Natural Stone Awards, which were presented in London in December. Over the past few months, the industry has been invited to choose its overall favourite and the winner will be announced at the Show on the first day, after Pecha Kucha-style presentations about the award-winning projects from the architects that designed them.

The second is the announcement of 10 Emerging Talent Awards to people identified as the next generation of leaders and influencers of the stone industry (see the seminar programme on page 10 for dates and times). The Awards will be presented at the end of a panel discussion about the skills the next generation in the industry will need. Experts will cover off how the industry is tackling the skills gap, driving sustainability, and using digitalisation and artificial intelligence to meet the challenges of tomorrow.

And please make sure you leave enough time to visit the 150 exhibitors themselves. As always, stone will be showcased from around the world with significant participation from Italy, Turkey, Portugal, China, Spain, and India. Then there is the latest CNC technology and tooling being promoted directly by the manufacturers, and the specialist consumables required for gluing, finishing, and maintaining stone. Find out how they can make your business more profitable and sustainable.

Finally, a visit to the Stone Federation Village is worthwhile for free technical advice on a one-to-one basis from some of the industry's leading experts. Whether it's help with ethical sourcing, local authority planning, flooring, BS8298, wetrooms or health & safety you need, simply introduce yourself at Stand I30 and ask the Stone Federation team to match your query to one of the available experts.

Take a fresh look at the stone industry and enjoy the show.

The Natural Stone Show and Hard Surfaces are owned and presented by

The **QMJ** Group

7 Regent Street
Nottingham
NG1 5BS

This Catalogue is printed in the UK by:
Buxton Press,
Buxton, Derbyshire

© QMJ Group, 2023

Information in this catalogue about exhibitors has been provided by the exhibitors themselves and they take full responsibility for the veracity of their statements.

While every effort has been made to reproduce colour in the illustrations faithfully to the original, due to the limitations of photography and printing, accuracy cannot be guaranteed. Always see samples of materials before buying or specifying.

Official Catalogue

Floorplan 04

A floorplan of the Natural Stone Show and Hard Surfaces

Product Selector 06

Where to find the category of products you are looking for

Conference Programme 10

There is a comprehensive seminar programme associated with both exhibitions. This is the programme for the seminars at the Natural Stone Show

A-Z of exhibitors 14

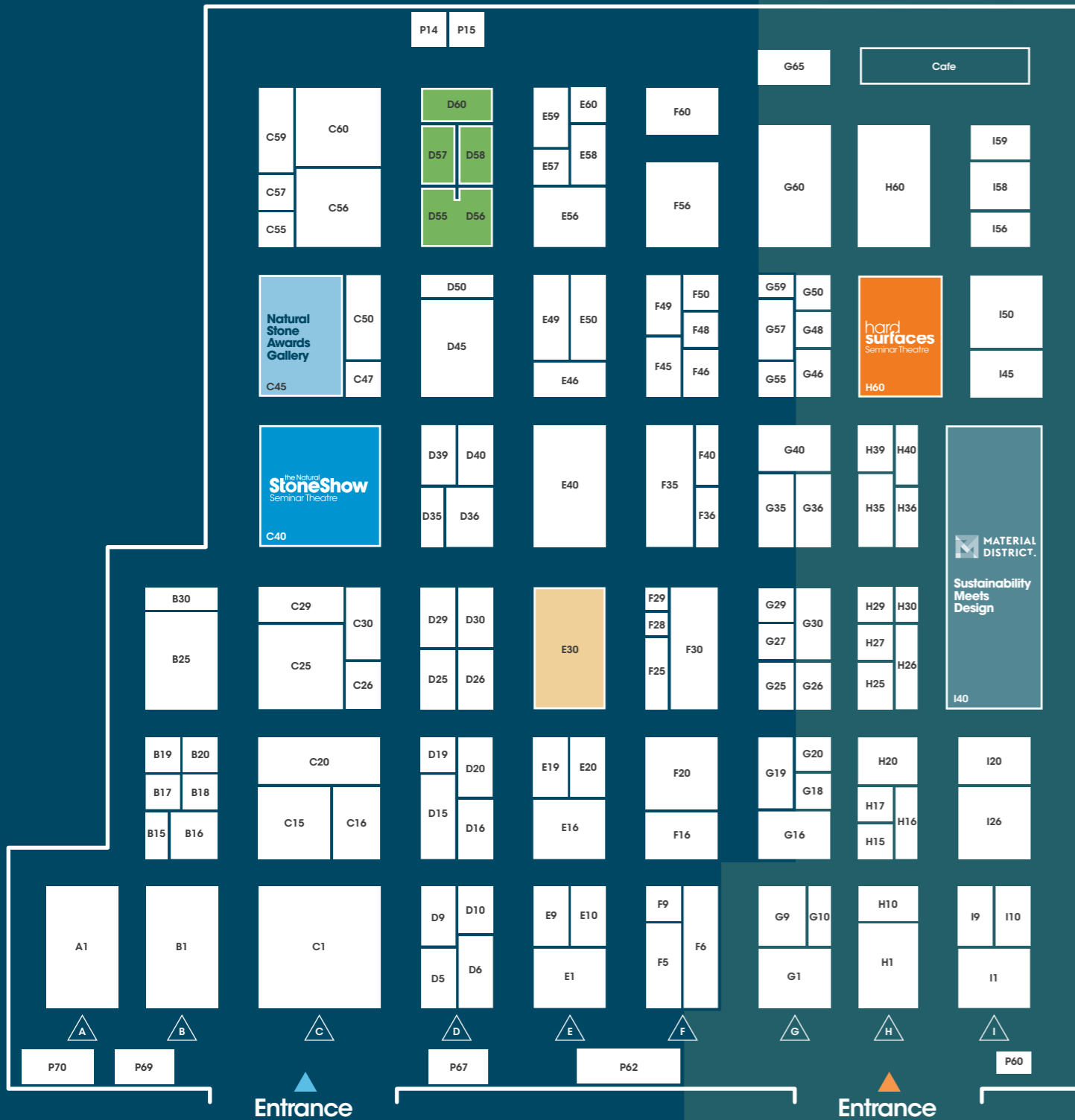
An alphabetical listing of exhibitors at the Natural Stone Show, with addresses, telephone numbers, email addresses and a brief description of the exhibitor

Natural Stone Specialist magazine 52

Natural Stone Specialist is the industry's magazine, which also publishes online at www.stonespecialist.com and emails the twice-monthly Natural Stone Bulletin. This issue of the magazine forms part of this Catalogue

Hard Surfaces Back cover

For the Hard Surfaces Exhibition Catalogue, including the seminar programme, turn to the back cover



A	Abaco E16	Ferrari & Cigarini UK H27	N	Natural Stone by Safa Ltd P15	Terra Natural D6
ABK Stone by Bloomstones London F20	Fontanilli Marble UK F16	Natural Stone Concepts G46	Natural Stone Show 2025 I58	Terzago Macchine E16	
Achilli Srl E16	Foshan Cera Power Ceramics Co Ltd I10	Natural Stone Specialist D20	Nicolai Diamant E16	Terzago Robotics B17	
AlterEgo Facades F60	G	Nikolaus Bagnara SpA D35	Noble Stone I9	TG Expo International Fairs Inc C55	
Ansen Quartz Stone Co Ltd E10	G S Diamant E16	On Point Engineering A1 B1 C1	Northern Precision Ltd H30	The QMJ Group I58	
Aquafil Solutions A1 B1 C1	Genex Stones London P67	Optidrive P14	Ozerler Marble D50	Thibaut A1 B1 C1	
Archiporcelain H35	Gestra B20	O	P	Tile & Stone Journal E58	
Arklam G9	Giacomini E16	Pardais Granites E19	Paving Stock H60	Tiling Logistics C16	
Artemistone F6	GNT - Granitos do Norte D10	Peckson Quartz Surface H10	Peckson Quartz Surface H10	U	
Artisan Stone / Gwrhyd Quarry E60	Granite Slabs UK H26	Pentagon Tiles G9	Piano Tile Mermer Madencilik Ithalat Ihracat Sanayi Ve Ticaret Ltd Sirketi D19	Ugr Ugur Hidrolik & Pnomatik Makine Sanayi Tic Ltd Sti C30	
Ascale Tau H26	Guangdong Bosun Stone Co Ltd I56	Pikaro Seramik Tasarim Uygulama Tic Ltd Sti H15	Planet Granite E57	Sanayi Tic Ltd Sti C30	
ASM Supplies Ltd E20	Guanzhou Vidastone Ltd H40	Polycor G25	Portland Sculpture & Quarry Trust C59	UK Solmar Ltd D25	
Authentic Stone E50	H	Premium Marbles & Granites Ltd G50	Prodim P69	Usel Makine Insaat San Ve Tic Ltd Sti B18	
AVA Stone H16	Hard Surfaces 2025 I58	Quarella I45	R	V	
Avesta Stone H39	Harrison Goldman F28	Rayon Stone Spain D9	Rielli Giancarlo Srl G10	Vetro Tooling Ltd D36	
B	Historic England D56	S	Z	VSM Abrasives E16	
Baroque Dogaltas Turizm Sanayi Ve Ticaret A.S D39	Huazhong Stone E9	Saint Astier C26	Zenith C SpA G29		
Bath Stone E40 E46	I	SAIT E16			
Batu Marble Tile & Stone D15	Icon, The Institute of Conservation D60	Sandberg D30			
BBS Brick and Stone Ltd H20	ICR Sprint E16	Simatflex E16			
BCC Stone Ltd D40	IHBC D58	Skarlis Marble F9			
BDS Marketing D20	Ilpa E16	Slabsmith B30			
Bestile G36	Ina Natural Stone G18	Society for the Protection of Ancient Buildings (SPAB) D57			
Big Slabs by Nuovocorso I1	India Stonemart 2024 C57	Sorkun Mermer Ins Harf Nak San Ve Tic Ltd Sti F48			
Bloomstones London F20	Infinity - The Engineered Stone I20	Spectra Stone H1			
Bluesky Stone F50	Integra Adhesives E56	SRB International Pvt Ltd C47			
Brachot Ltd G16	Italian Luxury Surfaces Ltd H25	Stamford Stone Company Ltd F56			
Bretton SpA C56	Italmecc Srl E16	Stone Care Europe SRL P62			
By Fikri Stone Madencilik San Ve Tic Ltd Sti G57	J	Stone Cladding Systems F25			
C	Johnston Quarry Group E40 E46	Stone Factory Global Impex Pvt. Ltd F30			
Ceramiche Caesar G40	Julipetra Lda G19	Stone Federation Great Britain E30			
Cicek Marble (Cicekmercan Mermer San Tic Ltd) F46	K	Stone Gallery from Valencian Region to the World G35			
Cidiam Group Srl E16	Kar-Mar Mining Construction Industry and Trade Limited Company G20	Stone Italiana I26			
Clay Internationa I20	Keope Ceramiche by Cristian Garofalo G1	Stone Profit Systems B15			
CMG Macchine Srl E16	KGF Granites C50	Stonegate Precision Tooling Ltd D45 F49			
Comandulli Srl C25	Komurcuoglu Mermer Tarim Urunleri San Ve Tic A.S F36	Styliib Ltd P60			
Costruzioni Meccaniche Donatoni E16	L	Sundstrom Safety AB B16			
Coverlam Top by Grespania G60	Lamar Ceramics C15	Summer Mermer Ith Ith San Ve Tic Ltd Sti E49			
Cunningham Masonry Cutting Machines B19	Lapitec SpA C60				
D	Leading Production Equipment Ltd C20				
D Zambelis E16	Lithofin F35				
Dal Forno E16	M				
Diamar Srl E16	Mainstream Granite E1				
Diamik Glass Ltd G65	Malbros Marbles & Granites Industries H36				
Diatex SpA D16	Manzelli A1 B1 C1				
Dimpomar D5	Marmox UK Ltd G48				
Diresco E1	Meridian Diamond Products B19				
Donatoni B25	Modamar Marble G27				
Doulling Architectural Stone F29	MP Treatment UK P70				
E	MPG G55				
Emmedue Machinery E16	MPG Stone E59				
English Stone Forum D55	MVC - Portuguese Limestones F5				
Erol Marble Maden San Tic Ltd Sti G26					
Etonsurfaces inc. G59					

Where to find the products you are looking for

If you are looking for a particular kind of stone or products in a particular category, the listing here can help. Exhibitors have included themselves under the headings where they believe they can help, so you can choose those you want to visit.

Bathrooms & kitchens

AVA Stone	H16
Big Slabs by Nuovocorso	I1
Bloomstones London	F20
Bluesky Stone	F50
Brachot Ltd	G16
By Fikri Stone Madencilik San Ve Tic Ltd Sti	G57
Clay International	I20
Coverlam Top by Grespania	G60
Erol Marble Maden	G26
Guangdong Bosun	I56
Harrison Goldman	F28
Huazhong Stone	E9
Komurcuoglu Mermer Tarim Urunleri San Ve Tic AS	F36
Lamar Ceramics	C15
Lapitec SpA	C60
Lithofin	F35
Marmox UK Ltd	G48
Natural Stone by Safa	P15
Planet Granite	E57
Polycor	G25
Premium Marbles & Granites	G50
Quarella	I45
Sandberg	D30
Stamford Stone Company Ltd	F56
Stone Care Europe	P62
Stone Federation Great Britain	E30
Terra Natural	D6
UK Solmar Ltd	D25
Vetro Tooling Ltd	D36
Wharf Solid Surfaces	I59
Worktop Fabricators Federation	I50
Xiamen Kunma Trade Co Ltd	H17

Ceramics

AVA Stone	H16
Avesta Stone	H39
Bestile	G36
Bloomstones London	F20
Brachot Ltd	G16
By Fikri Stone Madencilik San Ve Tic Ltd Sti	G57
Ceramiche Caesar	G40
Diatex SpA	D16
Granite Slabs UK	H26
Keope Ceramiche by Cristian Garofalo	G1
Lapitec SpA	C60

Malbros Marbles & Granites Industries

Northern Precision Ltd	H30
Paving Stock	H60
Pikaro Seramik Tasarim Uygulama Tic Ltd Sti	H15
Stone Care Europe	P62
Stonegate Precision Tooling Ltd	D45, F49
Stylib Ltd	P60
Terra Natural	D6
Tiling Logistics	C16
Vetro Tooling Ltd	D36
Waters Group	E56
Worktop Fabricators Federation	I50

Cladding

AlterEgo Facades	F60
Artisan Stone / Gwrhyd Quarry	E60
AVA Stone	H16
Bath Stone	E40, E46
BCC Stone Ltd	D40
Bluesky Stone	F50
Brachot Ltd	G16
Cicek Marble (Cicekmersan Mermer San Tic Ltd)	F46
Clay International	I20
Diresco	E1
Doulling Architectural Stone	F29
GNT - Granitos do Norte	D10
Harrison Goldman	F28
Julipetra Lda	G19
Kar-Mar Mining Construction Industry	G20
Lapitec SpA	C60
Mainstream Granite	E1
Malbros Marbles & Granites Industries	H36
Marmox UK Ltd	G48
MVC - Portuguese Limestones	F5
Northern Precision Ltd	H30
Onur Marble Co	G30
Pardais Granites	E19
Paving Stock	H60
Polycor	G25
Premium Marbles & Granites	G50
Quarella	I45
Rielli Giancarlo Srl	G10
Sandberg	D30
Sorkun Mermer Ins Harf Nak San Ve Tic Ltd Sti	F48

Stone Care Europe

Stone Cladding Systems	F25
Stone Federation Great Britain	E30
Terra Natural	D6
UK Solmar Ltd	D25
Zenith C SpA	G29

Consultancy

Artisan Stone / Gwrhyd Quarry	E60
BDS Market Intelligence	I58
Gestra	B20
Harrison Goldman	F28
IHBC	D58
MP Treatment UK	P70
MPG	G55
Sandberg	D30
Stamford Stone Company Ltd	F56
Stone Care Europe	P62
Stonegate Precision Tooling Ltd	D45, F49
Tiling Logistics	C16

Consumables

ASM Supplies Ltd	E20
D Zambelis Ltd	E16
FILA Solutions Ltd	D26
ICR Sprint	E16
Ilpa	E16
Integra Adhesives	E56
Leading Production Equipment Ltd	C20
Meridian Diamond Products	B19
MP Treatment UK	P70
Northern Precision Ltd	H30
Saint Astier	C26
SAIT	E16
Stone Care Europe	P62
Stone Profit Systems	B15
Stonegate Precision Tooling Ltd	D45, F49
Sundstrom Safety AB	B16
Tiling Logistics	C16
Vetro Tooling Ltd	D36
VSM Abrasives	E16
Waters Group	E56
Wodiam	C29

Education / Training

English Stone Forum	D55
Historic England	D56
IHBC	D58
MP Treatment UK	P70
MPG	G55
Portland Sculpture & Quarry Trust	C59
Sandberg	D30
Stone Federation Great Britain	E30
Stonegate Precision Tooling Ltd	D45, F49
Tiling Logistics	C16
Worktop Fabricators Federation	I50

Engineered Quartz

Ansen Quartz Stone Co Ltd	E10
Bloomstones London	F20
Brachot Ltd	G16
Diatex SpA	D16
Diresco	E1
Foshan Cera Power Ceramics Co Ltd	I10
Genex Stones London Ltd	P67
Granite Slabs UK	H26
Guangdong Bosun Stone	I56
Guanzhou Vidastone	H40
Huazhong Stone	E9
Italian Luxury Surfaces	H25
Lapitec SpA	C60
Mainstream Granite	E1
Malbros Marbles & Granites Industries	H36
MP Treatment UK	P70
MPG Stone India	E59
Noble Stone	I9
Northern Precision Ltd	H30
Peakson Quartz Surface	H10
Planet Granite	E57
Quarella	I45
Stone Care Europe	P62
Stone Italiana	I26
Stonegate Precision Tooling Ltd	D45, F49
Stylib Ltd	P60
Tiling Logistics	C16
Vetro Tooling Ltd	D36
Waters Group	E56
Worktop Fabricators Federation	I50

Xiamen Boss	F40
Xiamen Leading Stone	F45
Xiamen New Europe	D29

Flooring

Artisan Stone / Gwrhyd Quarry	E60
Authentic Stone	E50
AVA Stone	H16
Big Slabs by Nuovocorso	I1
Bluesky Stone	F50
Brachot Ltd	G16
By Fikri Stone Madencilik San Ve Tic Ltd Sti	G57
Ceramiche Caesar	G40
Cicek Marble (Cicekmersan Mermer San Tic Ltd)	F46
Clay International	I20
Diresco	E1
Doulling Architectural Stone	F29
Erol Marble Maden San Tic Ltd Sti	G26

Etonsurfaces Inc	G59
GNT - Granitos do Norte	D10
Harrison Goldman	F28
Julipetra Lda	G19
Kar-Mar Mining Construction Industry and Trade	G20
Keope Ceramiche by Cristian Garofalo	G1
Komurcuoglu Mermer Tarim Urunleri San Ve Tic AS	F36
Lamar Ceramics	C15
Lapitec SpA	C60
Lithofin	F35
Malbros Marbles & Granites Industries	H36
MVC - Portuguese Limestones	F5
Natural Stone by Safa Ltd	P15
Natural Stone Concepts	G46
Onur Marble Co	G30
Pardais Granites	E19
Paving Stock	H60
Piano Tile Mermer Madencilik Ithalat Ihracat Sanayi Ve Ticaret Limited Sirketi	D19
Pikaro Seramik Tasarim Uygulama Tic Ltd Sti	H15
Premium Marbles & Granites Ltd	G50

Quarella	I45
Rielli Giancarlo Srl	G10
Sandberg	D30
Sorkun Mermer Ins Harf Nak San Ve Tic Ltd Sti	F48
Stamford Stone Company Ltd	F56
Stone Care Europe	P62
Stone Federation Great Britain	E30
Stonegate Precision Tooling Ltd	D45, F49
Stylib Ltd	P60
Terra Natural	D6
Tiling Logistics	C16
UK Solmar Ltd	D25
Zenith C SpA	G29

Glass Products

Diamik Glass Ltd	G65
Stonegate Precision Tooling Ltd	D45, F49
Vetro Tooling Ltd	D36

Granite

AlterEgo Facades	F60
Artemistone	F6
Ascale Tau	H26
BBS Brick and Stone Ltd	H20
BCC Stone Ltd	D40
Bloomstones London	F20
Brachot Ltd	G16
Diatex SpA	D16
Dimpomar	D5
Genex Stones London Ltd	P67
GNT - Granitos do Norte	D10
Italian Luxury Surfaces Ltd	H25
KFG Granites	C50
Lapitec SpA	C60
Lithofin	F35
Mainstream Granite	E1
Malbros Marbles & Granites Industries	H36
MP Treatment UK	P70
MPG Stone India	E59
Natural Stone Concepts	G46
Nikolaus Bagnara SpA	D35
Northern Precision Ltd	H30
Pardais Granites	E19
Paving Stock	H60
Planet Granite	E57
Polycor	G25
Premium Marbles & Granites Ltd	G50
Spectra Stone	H1
Stone Care Europe	P62
Stone Cladding Systems	F25
Stone Factory Global Impex	F30
Stone Federation Great Britain	E30
Stone Gallery from Valencian Region to the World	G35
Stonegate Precision Tooling Ltd	D45, F49

Stylib Ltd	P60
Terra Natural	D6
Tiling Logistics	C16
UK Solmar Ltd	D25
Vetro Tooling Ltd	D36
Waters Group	E56
Worktop Fabricators Federation	I50
Xiamen Boss Imp & Exp	F40
Xiamen Kunma Trade	H17
Xiamen Leading Stone	F45
Xiamen Maixee	D40
Xiamen New Europe	D29
Xiamen Yoyo Stone	H29

Hard Landscaping

Artisan Stone / Gwrhyd Quarry	E60
BBS Brick and Stone Ltd	H20
Bluesky Stone	F50
Brachot Ltd	G16
Diresco	E1
GNT - Granitos do Norte	D10
Harrison Goldman	F28
KGF Granites	C50
Lapitec SpA	C60
Mainstream Granite	E1
Malbros Marbles & Granites Industries	H36
Natural Stone Concepts	G46
Onur Marble Co	G30
Pardais Granites	E19
Piano Tile Mermer Madencilik Ithalat Ihracat Sanayi Ve Ticaret Limited Sirketi	D19
Polycor	G25
Premium Marbles & Granites	G50
Sandberg	D30
Sorkun Mermer Ins Harf Nak San Ve Tic Ltd Sti	F48
Stone Care Europe	P62
Stone Federation Great Britain	E30
Stonegate Precision Tooling Ltd	D45, F49
Terra Natural	D6
Xiamen Yoyo Stone	H29

Limestone

AlterEgo Facades	F60
Authentic Stone	E50
Bath Stone	E40, E46
Brachot Ltd	G16
Dimpomar	D5
Doulling Architectural Stone	F29
Genex Stones London Ltd	P67
Italian Luxury Surfaces Ltd	H25
Johnston Quarry Group	E40
Julipetra Lda	G19
Lithofin	F35
Malbros Marbles & Granites Industries	H36
Modamar Marble	G27
MP Treatment UK	P70
MPG Stone India	E59
MVC - Portuguese Limestones	F5
Natural Stone Concepts	G46
Nikolaus Bagnara SpA	D35
Northern Precision Ltd	H30
Onur Marble Co	G30
Paving Stock	H60
Piano Tile Mermer Madencilik Ithalat Ihracat Sanayi Ve Ticaret Limited Sirketi	D19
Polycor	G25
Portland Sculpture & Quarry Trust	C59
Spectra Stone	H1
Stamford Stone Company Ltd	F56
Stone Care Europe	P62

Stone Cladding Systems	F25
Stone Factory Global Impex	F30
Stone Federation Great Britain	E30
Stone Gallery from Valencian Region to the World	G35

Stonegate Precision Tooling Ltd	D45, F49
Stylib Ltd	P60
Terra Natural	D6
Tiling Logistics	C16
UK Solmar Ltd	D25
Waters Group	E56
Worktop Fabricators Federation	I50
Xiamen Kunma Trade Co Ltd	H17
Xiamen Leading Stone	F45
Xiamen Yoyo Stone	H29

Machinery

Abaco	E16
Achilli Srl	E16
Aquafil Solutions	A1 B1 C1
Breton SpA	C56
Cidiam Group Srl	E16
CMG Macchine Srl	E16
Comandulli Srl	C25
Costruzioni Meccaniche Donatoni	E16
Cunningham Masonry Cutting Machines	B19
D Zambelis Ltd	E16
Dal Forno	E16
Diamar Srl	E16
Diatex SpA	D16
Donatoni	B25
Dimpomar	D5
Doulling Architectural Stone	F29
Ferrari & Cigarini UK	H27
G S Diamant	E16
Gestra	B20
Giacomini	E16
Italmecc Srl	E16
Lithofin	F35
Leading Production Equipment Ltd	C20
Manzelli	A1, B1, C1
MP Treatment UK	P70
Nicolai Diamant	E16
O.M.G.M. Bellani	E16
OMAG SpA	E16
ON Point Engineering	A1, B1, C1
Optidrive	P14
Prodim	P69
Simaflex	E16
Slabsmith	B30
Stonegate Precision Tooling Ltd	D45, F49
Terzago Macchine	E16
Terzago Robotics	B17
Thibaut	A1, B1, C1
Tiling Logistics	C16
Ugr Ugur Hidrolik & Pnomatik	C30
Makine Sanayi Tic Ltd Sti	F56
Usel Makine Insaat San Ve Tic	B18

Product selector

Vetro Tooling Ltd	D36
Waters Group	E56
Wodiam	C29

Marble

Authentic Stone	E50
Baroque Dogaltas Turizm Sanayi Ve Ticaret A.S	D39
Batu Marble Tile & Stone	D15
BCC Stone Ltd	D40
By Fikri Stone Madencilik San Ve Tic Ltd Sti	G57
Cicek Marble (Cicekmersan Mermer San Tic Ltd)	F46
Dimpomar	D5
Erol Marble Maden San Tic Ltd Sti	G26
Fontanili Marble UK	F16
Genex Stones London Ltd	P67
Granite Slabs UK	H26
Ina Natural Stone	G18
Italian Luxury Surfaces Ltd	H25
Komurcuoglu Mermer Tarim Urunleri San Ve Tic A.S	F36
Lapitec SpA	C60
Lithofin	F35
Mainstream Granite	E1
Malbros Marbles & Granites Industries	H36
Modamar Marble	G27
MP Treatment UK	P70
MPG Stone India	E59
Natural Stone by Safa Ltd	P15
Nikolaus Bagnara SpA	D35
Northern Precision Ltd	H30
Onur Marble Co	G30
Ozerler Marble	D50
Paving Stock	H60
Piano Tile Mermer Madencilik Ithalat Ihracat Sanayi Ve Ticaret Limited Sirketi	D19
Pikaro Seramik Tasarim Uygulama Tic Ltd Sti	H15
Polycor	G25
Premium Marbles & Granites Ltd	G50
Quarella	I45
Rayon Stone Spain	D9
Rielli Giancarlo Srl	G10
Skarlis Marble	F9
Sorkun Mermer Ins Harf Nak San Ve Tic Ltd Sti	F48
Spectra Stone	H1
SRB International Pvt Ltd	C47
Stone Care Europe	P62
Stone Factory Global Impex	F30
Stone Federation Great Britain	E30
Stone Gallery from Valencian Region to the World	G35
Stonegate Precision Tooling Ltd	D45, F49
Stylib Ltd	P60
Summer Mermer Ith Ihr San Ve Tic Ltd Sti	E49
Terra Natural	D6
Tiling Logistics	C16
UK Solmar Ltd	D25
Vetro Tooling Ltd	D36
Waters Group	E56
Worktop Fabricators Federation	I50

Xiamen Boss Imp & Exp Co. Ltd	F40
Xiamen Kunma Trade Co. Ltd	H17
Xiamen Leading Stone Imp & Exp Co Ltd	F45
Xiamen Maixee Imp & Exp	D40
Xiamen Yoyo Stone Imp & Exp	H29
Zenith C SpA	G29

Memorials

Artisan Stone / Gwrhyd Quarry	E60
Portland Sculpture & Quarry Trust	C59
Sandberg	D30
SRB International Pvt Ltd	C47
Stamford Stone Company Ltd	F56
Stone Care Europe	P62
Xiamen Leading Stone	F45

Metal products

Northern Precision Ltd	H30
Stylib Ltd	P60
Xiamen Leading Stone	F45

Other Stone / Stone Products

Artisan Stone / Gwrhyd Quarry	E60
Baroque Dogaltas Turizm Sanayi Ve Ticaret AS	D39
Batu Marble Tile & Stone	D15
BBS Brick and Stone Ltd	H20
Bloomstones London	F20
Brachot Ltd	G16
By Fikri Stone Madencilik San Ve Tic Ltd Sti	G57
Cicek Marble (Cicekmersan Mermer San Tic Ltd)	F46
Dimpomar	D5
Erol Marble Maden San Tic Ltd Sti	G26
GNT - Granitos do Norte	D10
Italian Luxury Surfaces Ltd	H25
Komurcuoglu Mermer Tarim Urunleri San Ve Tic A.S	F36
Lapitec SpA	C60
Malbros Marbles & Granites Industries	H36
Marmox UK Ltd	G48
Modamar Marble	G27
MP Treatment UK	P70
Nikolaus Bagnara SpA	D35
Northern Precision Ltd	H30
Onur Marble Co	G30
Paving Stock	H60
Piano Tile Mermer Madencilik Ithalat Ihracat Sanayi Ve Ticaret Limited Sirketi	D19
Pikaro Seramik Tasarim Uygulama Tic Ltd Sti	H15
Premium Marbles & Granites Ltd	G50
Rayon Stone Spain	D9
Sorkun Mermer Ins Harf Nak San Ve Tic Ltd Sti	F48
Spectra Stone	H1
Stone Care Europe	P62
Stone Factory Global Impex	F30

Stone Italiana	I26
Stonegate Precision Tooling Ltd	D45, F49
Stylib Ltd	P60
Terra Natural	D6
Vetro Tooling Ltd	D36
Waters Group	E56
Worktop Fabricators Federation	I50
Xiamen Boss Imp & Exp Co Ltd	F40
Xiamen Kunma Trade Co Ltd	H17
Xiamen Leading Stone	F45
Xiamen Yoyo Stone	H29

Porcelain Products

Archiporcelain	H35
Arklam	G9
Ascale Tau	H26
Authentic Stone	E50
AVA Stone	H16
Avesta Stone	H39
Bestile	G36
Big Slabs by Nuovocorso	I1
Bloomstones London	F20
Ceramiche Caesar	G40
Clay International	I20
Diatex SpA	D16
Genex Stones London Ltd	P67
Keope Ceramiche by Cristian Garofalo	G1
Lamar Ceramics	C15
Lapitec SpA	C60
Malbros Marbles & Granites Industries	H36
MPG Stone India	E59
Natural Stone Concepts	G46
Paving Stock	H60
Pentagon Tiles	G9
Stone Care Europe	P62
Stone Factory Global Impex	F30
Stone Italiana	I26
Stonegate Precision Tooling Ltd	D45, F49
Stylib Ltd	P60
Terra Natural	D6
Tiling Logistics	C16
Vetro Tooling Ltd	D36
Waters Group	E56
Worktop Fabricators Federation	I50

Restoration / Conservation

Artisan Stone / Gwrhyd Quarry	E60
Bath Stone	E40 E46
Doulling Architectural Stone	F29
English Stone Forum	D55
Harrison Goldman	F28
Historic England	D56
Icon, The Institute of Conservation	D60
IHBC	D58
Lithofin	F35
MP Treatment UK	P70
MPG	G55
Onur Marble Co	G30
Portland Sculpture & Quarry Trust	C59

Sandberg	D30
Society for the Protection of Ancient Buildings (SPAB)	D57
Stamford Stone Company Ltd	F56
Stone Care Europe	P62
Stone Federation Great Britain	E30
Terra Natural	D6
Tiling Logistics	C16

Roofing

Lapitec SpA	C60
Malbros Marbles & Granites Industries	H36
Sandberg	D30
Terra Natural	D6

Sandstone Products

AlterEgo Facades	F60
Artisan Stone / Gwrhyd Quarry	E60
BBS Brick and Stone Ltd	H20
BCC Stone Ltd	D40
Brachot Ltd	G16
Dimpomar	D5
Italian Luxury Surfaces Ltd	H25
Malbros Marbles & Granites Industries	H36
MPG Stone India	E59
Natural Stone Concepts	G46
Northern Precision Ltd	H30
Paving Stock	H60
Stone Care Europe	P62
Stone Cladding Systems	F25
Stone Factory Global Impex	F30
Stone Federation Great Britain	E30
Stonegate Precision Tooling Ltd	D45, F49
Stylib Ltd	P60
Terra Natural	D6
Tiling Logistics	C16
Waters Group	E56
Xiamen Kunma Trade Co Ltd	H17
Xiamen Leading Stone	F45
Xiamen Yoyo Stone	H29

Slate Products

Authentic Stone	E50
BCC Stone Ltd	D40
Bluesky Stone	F50
Brachot Ltd	G16
Cicek Marble (Cicekmersan Mermer San Tic Ltd)	F46
Dimpomar	D5
Italian Luxury Surfaces Ltd	H25
Lithofin	F35
Mainstream Granite	E1
Malbros Marbles & Granites Industries	H36
Marmox UK Ltd	G48
MPG Stone India	E59
Natural Stone Concepts	G46
Paving Stock	H60
Stone Care Europe	P62
Stone Factory Global Impex	F30
Stone Federation Great Britain	E30
Stylib Ltd	P60
Terra Natural	D6
Tiling Logistics	C16

Xiamen Kunma Trade Co Ltd	H17
Xiamen Leading Stone	F45
Xiamen Maixee	D40
Xiamen Yoyo Stone	H29

Ultra-Compact Surfaces (UCS)

Bloomstones London	F20
Coverlam Top by Grespania	G60
Diatex SpA	D16
MP Treatment UK	P70
Northern Precision Ltd	H30
Stonegate Precision Tooling Ltd	D45, F49
Vetro Tooling Ltd	D36
Waters Group	E56
Worktop Fabricators Federation	I50

Terrazzo

Brachot Ltd	G16
Etonsurfaces inc.	G59
Italian Luxury Surfaces Ltd	H25
MP Treatment UK	P70
Northern Precision Ltd	H30
Quarella	I45
Stone Care Europe	P62
Stone Italiana	I26
Stylib Ltd	P60
Terra Natural	D6
Tiling Logistics	C16
Vetro Tooling Ltd	D36

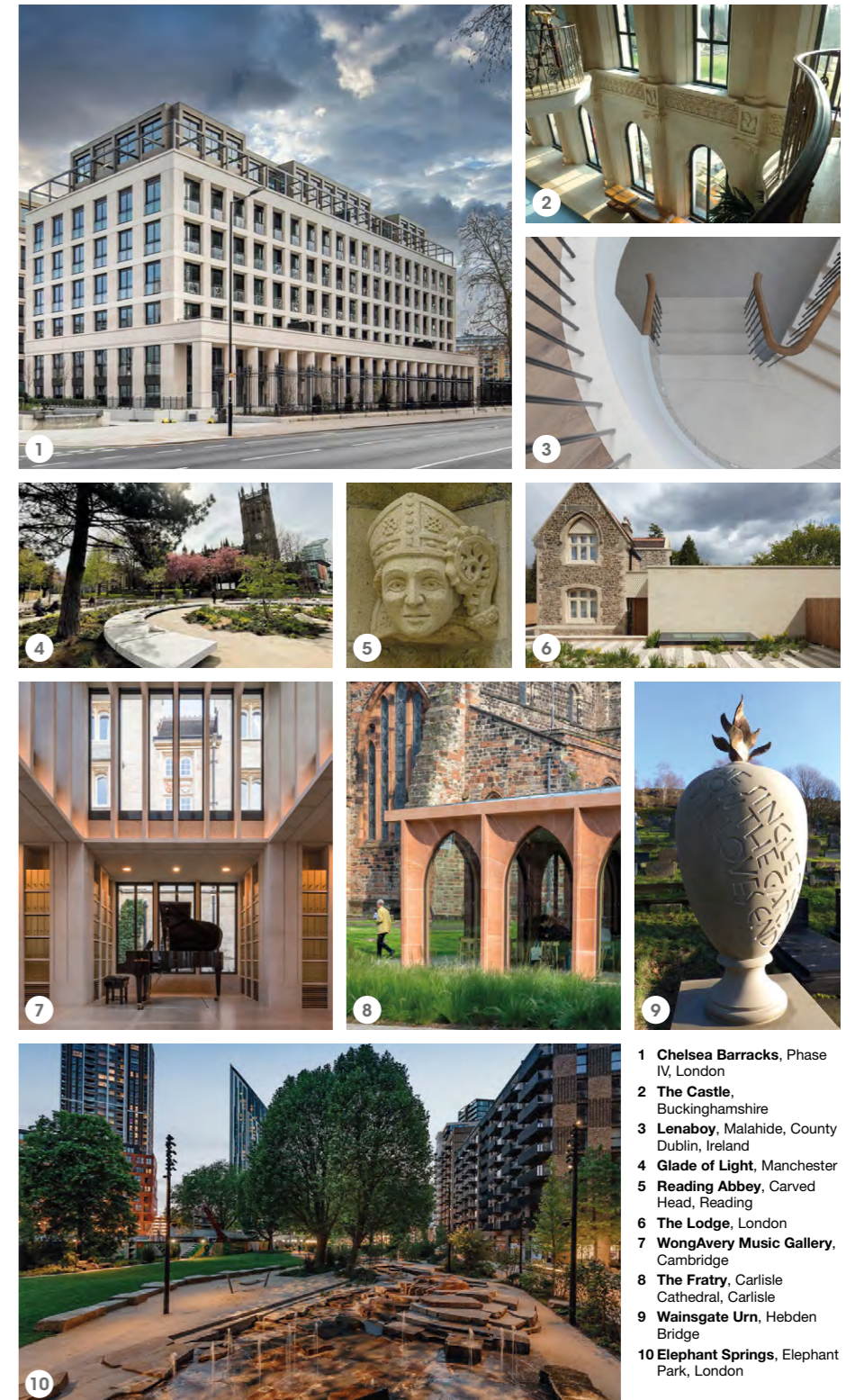
Solid Surfaces

Bloomstones London	F20
Brachot Ltd	G16
Diresco	E1
Italian Luxury Surfaces Ltd	H25
Mainstream Granite	E1
MP Treatment UK	P70
Northern Precision Ltd	H30
Spectra Stone	H1
Stone Care Europe	P62
Stone Italiana	I26
Stylib Ltd	P60
Terra Natural	D6
Tiling Logistics	C16
Wharf Solid Surfaces	I59
Worktop Fabricators Federation	I50



Natural Stone Awards

Visit the Gallery on Stand C45 to view all the projects from the Stone Federation's recent Natural Stone Awards.



- 1 Chelsea Barracks, Phase IV, London
- 2 The Castle, Buckinghamshire
- 3 Lenaboy, Malahide, County Dublin, Ireland
- 4 Glade of Light, Manchester
- 5 Reading Abbey, Carved Head, Reading
- 6 The Lodge, London
- 7 WongAvery Music Gallery, Cambridge
- 8 The Fraty, Carlisle Cathedral, Carlisle
- 9 Wainsgate Urn, Hebden Bridge
- 10 Elephant Springs, Elephant Park, London



Join us at the Natural Stone Show seminar theatre from midday on Tuesday 6 June as we reveal the **Industry Choice Award** as voted for by the stone industry; chosen from the individual award-winners from each category of the Natural Stone Awards.

Each day of the show includes free CPD presentations focussing on a different aspect of the stone industry. The presentations take place in the Seminar Theatre on the show floor.

Come and be inspired by CPD presentations

Tuesday 6 June is Architects Day

Stone: laying the foundations of a sustainable future

10:00–11:00

The what, why and how of EPDs (Environmental Product Declarations) and the relevance and practicalities of EPDs for the stone industry.

10:00–10:05 Introduction

Susannah Streeter, Broadcaster & Host

10:05–10:20 EPD's explained

Dr Flavie Lowres, Consultant – Green Thinking Ltd

10:20–10:35 A building professional's perspective on maximising the potential of EPDs

Alex Lynes, Associate Director – Webb Yates

10:35–10:50 EPDs in the Natural Stone Industry: A Case Study

Sini Laine, Executive Director – KIVI (Former Finnish Natural Stone Association)

10:50–11:00 Panel discussion

Guided tour of the exhibition

11.10–11.45

A guided tour of the Natural Stone Show for building professionals to gain first-hand experience of both materials and technology in the sector with commentary and 'q & a' provided through wireless headsets.

The tour sets off from the Natural Stone Show Seminar Theatre at 11.10am and is hosted by Eric Bignell, Editor-in-Chief of *Natural Stone Specialist* magazine. To take part, simply turn up at the Seminar Theatre at 11.10.

Studies in stone – award-winning projects discussed + the announcement of the 'Industry Choice' Award winner

12:00–13:00

Architects present a series of award-winning projects with the session culminating in the announcement of the 'Industry Choice' award for the UK's favourite stone project

12:00–12:05 Introduction

Susannah Streeter, Broadcaster & Host

12:05–12:15 Chelsea Barracks, Phase IV, London: New Build Modern Style Stone Cladding Winner

Robert Kennett, Director – Eric Parry Architects

12:15–12:25 Lenaboy, Malahide, County Dublin, Ireland: Interiors, Commercial & Residential Winner

Hilary Caulfield Wright, Director – Caulfield Wright Architects

12:25–12:35 The Fraternity, Carlisle Cathedral, Carlisle: Repair & Restoration, Ecclesiastical Winner

Ingrid Petit, Associate – Feilden Fowles

12:35–12:45 Elephant Springs, Elephant Park, London: Landscaping, Commercial & Public Realm Winner

Neil Matthew, Senior Associate Landscape Architect – Gillespies

12:45–13:00 Presentation of The Industry Choice Award

Ethical & responsible sourcing of natural stone

14:00–14:40

Do you know where and how your stone has been sourced? Is the process improving or damaging communities and what are its environmental impacts?

14:00–14:05 Introduction

Susannah Streeter, Broadcaster & Host

14:05–14:20 An overview of the Ethical Stone Register

David Richardson, Director – Diagenesis Consulting

14:20–14:30 Our Ethical Stone Register Journey: Hutton Stone Co

Marcus Paine, Managing Director – Hutton Stone Co

14:30–14:40 Panel discussion

Sustainable Surface protection solutions – indoor air quality care

14:45–15:15

Sustainable Surface protection solutions – indoor air quality care

Are the surface treatments you are using safe and genuinely sustainable? Discover more about the latest products designed to guarantee a healthy indoor living environment.

Filippo Rampado, Country Manager UK & Ireland – Fila Solutions

Wednesday 7 June is Industry Day

Industry updates: diversity, the skills gap and local authority planning

10:00–11:00

Meeting the challenges facing the industry with an update from WINS; the launch of the Stone Academy; and where the opportunities lie for the industry through the planning process.

10:00–10:05 Introduction

Susannah Streeter, Broadcaster & Host

10:05–10:20 WINS (Women in Natural Stone): mentoring, networking and support

Becca Cranfield, Co-Chair – WINS and Director – Athena Stonecare

10:20–10:35 Training: the launch of the Stone Academy

Chris Kelsey, President – Stone Federation Great Britain

10:35–10:50 Local authority planning and natural stone

Sam Thistlethwaite, Director – IC Planning

10:50–11:00 Panel discussion

Setting the Standard

12:00–13:00

The new BS8298 part 5 for stone cladding (interiors); using BS7533 part 101 to deliver sustainable landscape schemes; and the Stone Federation new code of practice for natural stone installation in Bathrooms, Shower Enclosures and Wet Rooms.

12:00–12:05 Introduction

Susannah Streeter, Broadcaster & Host

12:05–12:20 Ensuring best practice: the new BS8298-5 Design and Installation of internal cladding and lining

Peter Harrison, Consultant, Stone Federation

12:20–12:35 Using BS7533-101 to deliver sustainable landscape schemes

Steven Burton (GMICE), Technical Director – Steintec

12:35–12:50 Introducing the Stone Federation's new code of practice for Natural Stone Installation in Bathrooms, Shower Enclosures and Wet Rooms

David Ellis, Partner – Sandberg LLP

12:50 – 13:00 Panel discussion

See next page for Emerging Talent Awards and the programme for Conservation Day... ➡

Meet the shortlist

Join us on Wednesday 7 June to see who made the final top ten!

We've been delighted by the response to our **Emerging Talent Awards** receiving nominations from across the industry, with submissions reflecting the contribution of a wide range of entrants.

The Awards are about recognising and rewarding the achievements of those at the beginning of their

career in the sector and form part of **Industry Day's** third seminar session, **Emerging Talent Awards**: meet the new stars of the stone industry, from 2pm on Wednesday 7 June. This will be hosted by leading broadcaster Susannah Streeter and culminates with the award presentations.



Ellie Parker
Sales Manager
Stoneworld Oxfordshire



Ryan James
Sculptor - Mason
Traditional Stone & Slate Ltd



Matthew Quinn
4th year Apprentice
Cunningham Stone
Contracts Ltd



Becca Cranfield
Director
Athena Stonecare Ltd



Jasper Zambelis
Sales & Marketing Executive
D Zambelis Ltd



Ashleigh McHale
Operations Manager
Tectonix Natural Stone Ltd



Jason Kennedy
Director
Stone Cladding Systems Ltd



Aiden Donnelly
Account Manager
Brachot Ltd



Kirsty Smart
Sawyer
Rockford



Steve Poole
Design Technician
Szerelmey



Douglas Stevens
Traditional Skills
Training Officer
Historic Environment
Scotland



Megan Jones
Business Manager
A F Jones Stonemasons



Arturs Legzdins MCIQB
Senior Project Manager &
Associate Director
Restore London Ltd



Carmen Chipaila
Production Executive
Britannicus Stone



Lewis Baker
Stone Mason / Fabricator
Marble 2 Marvel Ltd



Matthew Kaye
Banker Mason
Boden & Ward
Stonemasons Ltd



Jeremiah Clark
Technical Manager
Stonemason Precision
Tooling Ltd



Stevie Murphy
Apprentice
Planet Granite UK Ltd /
Planet Robotics



Luke Maher
Stonemason
Historic Environment
Scotland



Samuel Tree
Director
Belgravia Stone Ltd

Seminars

Wednesday 7 June (cont)...

Emerging Talent Awards – meet the new stars of the stone industry

14:00–15:00

An expert panel debates how the next generation is tackling the skills gap and driving sustainability and digitalisation, followed by the presentation of the Emerging Talent Awards.

14:00–14:05 Introducing the panel

Susannah Streeter, Broadcaster and Economic Commentator

14:05–14:45 Panel discussion on challenges facing the next generation

Sean Collins, Managing Director – Boden & Ward Stonemasons; Stefan Mordue, Senior Digital Consultant for Cohesive; Chloe Newmann, Senior Structural Engineer – Webb Yates; Chris Kelsey, President – Stone Federation Great Britain

14:40–14:55 Video of the Award Winners

14:55 – 15:00 Presentation of the Awards

Thursday 8 June is Conservation Day

Responsible sourcing of building stone – online tools

10:00–11:30

From the newly launched **Building Stone Database for England** to the **Historic Environment Scotland Stone Carbon Calculator**. Chaired by **Tim Yates**, Principal Consultant, Built Environment Team, BRE.

10:00–10:30 Launch of The Building Stones Database for England

Clara Willett, Senior Building Conservation Advisor – Historic England

10:30–11:00 Introducing Historic Environment Scotland's Stone Carbon Calculator

Ali Davey, Project Manager – Traditional Skills & Materials at Historic Environment Scotland
Jim Hart, Sustainability Consultant – JH Sustainability Ltd

11:00–11:30 Identifying and Sourcing Building stone on a Small Scale for the Repair of Historic Buildings

Dr Andy King – Geckoella Ltd

Understanding stone in relation to climate change: a selection of current research projects

12:00–13:50

Topics covered include the Bioreceptivity of stone and UVC cleaning guidance. Chaired by **Clara Willett**, Senior Architectural Conservator, Historic England

12:00–12:30 Climate change adaptations on the Commonwealth War Graves Commission estate including enzyme cleaning trials

John Gedling, Director of Works – Commonwealth War Graves Commission

12:30–13:00 Understanding and measuring how stone properties influence biological growth

Dr Philip Skipper, Researcher – Lincoln University and Consultant – Philip Skipper Heritage Science Services; Lynda Skipper, Senior Lecturer & Programme Leader – Lincoln University

13:00–13:30 Treating organic growth using UVC light

Andrew More, Senior Building Services Engineer – Historic England

13:30–13:50 Conserving the Past, Building the Future: A Collaborative Approach

Michael Sheppard, Deputy Director - Cathedrals Workshop Fellowship (on behalf of ICON)

A sustainable supply of roofing stone and slate

14:00–15:30

A series of case studies focusing on indigenous slates. Chaired by **Alison Henry**, Head of Building Conservation, Historic England or **Michael Poultny**, Managing Director, Albion Stone

14:00–14:30 Cumbrian slate: traditional production for heritage projects

Ian Ramsay, Sales Manager - Burlington Slate Ltd

14:30–15:00 Welsh slate roofing: 5million years old and still going strong

John Owens, Technical Sales Manager - Breedon Group

15:00–15:30 Thorpe Scratchville Case Study: Swithland Slate

Richard Jordan, Technical Trainer / Assessor and Building Conservation Consultant – Jordan Roofing Ltd

Abaco

E16

42-44 Cutlers Road
South Woodham
Ferrers
Essex
CM3 5XJ
☎ 01621 742577
sales@dzambelis.co.uk
<https://dzambelis.co.uk>

Stella Zambelis, Jasper Zambelis.

The complete range of Abaco lifting and handling equipment, including transport frames, lifters and clamps, is available from D Zambelis in Ferrers, Essex.

ABK Stone by Bloomstones London

F20

Unit G
Acorn Industrial Park
Crayford Road
Dartford
DA1 4FL
☎ 0203 7749683
info@bloomstoneslondon.com
<http://www.bloomstoneslondon.com>

Adam Reuvany, Gary Chipping

Invisible Cooking Surface Prime induction cooking system sold by Bloomstones London.

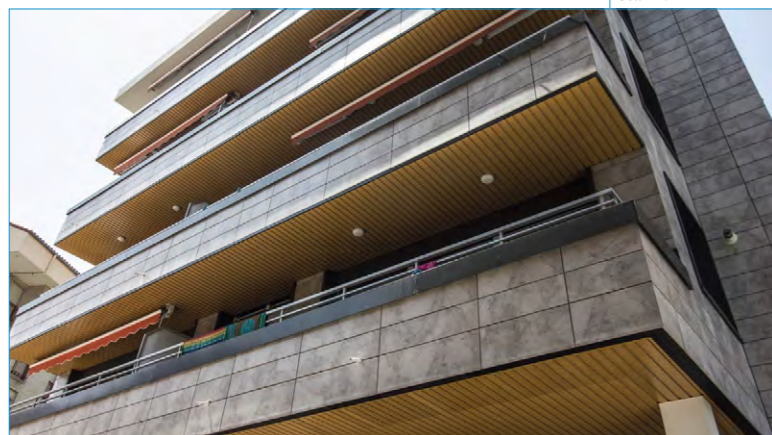
Achilli Srl

E16

42-44 Cutlers Road
South Woodham
Ferrers
Essex
CM3 5XJ
☎ 01621 742577
sales@dzambelis.co.uk
<https://dzambelis.co.uk>

Stella Zambelis, Jasper Zambelis

The Achilli range of secondary saws and machinery, including the popular four Axes Gold with motorised



Cladding by AlterEgo Facades (F60). There will be more examples of the company's recent work on its stand.

tilting head, is available from D Zambelis. The Achilli range also includes portable and fixed bench saws, as well as slab trolleys and floor machines.

AlterEgo Facades

F60

The HubSpace
Unit 139 Devonshire Business Centre
Works Road
SG6 1GJ
☎ 01462 488218
jg@alteregofacades.co.uk
<https://alteregofacades.co.uk>

Michal Bielewicz, Joe Giles

North Hertfordshire-based AlterEgo Facades is a design and engineering-led supplier of façade solutions in natural stone, concrete and ceramic claddings. AlterEgo guides its customers through all the project stages from design to completion, offering advice and solutions about stone selection and installation methodology to ensure a cost-effective and high-performance natural stone façade.

AlterEgo has designed its own range of carrier systems, branded as EGO, that can be used on virtually any application and offers specifiers greater design flexibility. AlterEgo promotes its products among architects, contractors and developers. It is a member of Stone Federation, CWCT and GRCA. Designs and solutions calculated on a project-to-project basis and covered by £5M PI cover.

Ansen Quartz Stone Co Ltd

E10

3# Building
Hongyi Ceramic City
Wugang Road
Chancheng District
Foshan City
Guangdong 528000
China
☎ +86-18138930709
frank@ansenstone.com
www.ansenstone.com

Chen Hongling

Ansen Quartz Stone is a global supplier specialising in the manufacture and sale of engineered quartz stone, quartz counter tops, culture stone and porcelain slabs. Located in Foshan, Guangdong, in the southern part of China, the company has a high-quality scientific research and marketing team with experience in product design and strict quality control.

Keeping up to date with design trends and providing clients with a wide range of fashionable colours in a selection of thickness to meet different applications, Ansen Quartz Stone provides high-grade products and a level of service that has satisfied customers in the United States, Canada, UK, Germany, Australia, Singapore, South Korea and more than 20 other countries and regions.

Aquafil Solutions

AI / BI / CI

Unit 7 Turnpike Industrial Estate
Nottingham
NG31 7DF
☎ 01476 573 827
enquiries@onpointengineering.co.uk
<https://onpointengineering.co.uk>

See representatives on stand

Water treatment from On Point Engineering.

Artisan Stone / Gwrhyd Quarry

E60

Gwrhyd Quarry
Gwrhyd Road
Rhiwfawr
Swansea
SA9 2SB
☎ 01639 830650
michael@specialiststone.com
<https://specialiststone.com>

Michael Walton, Linda Saunders

Gwrhyd Pennant sandstone is quarried on the hills looking out over the Black Mountains into the heart of Wales. It is one of the most beautiful stones available in the UK with natural colour variations that enhance any setting. The stone is fashioned at the quarry to customers' individual requirements using both traditional and modern production techniques. Each stone is produced to the highest quality and environmental standards, so you can be sure that you are using the very finest of building materials.



Bloomstone (F20) is demonstrating the ABK Stone Cooking Surface Prime under-surface induction hobs it is now selling in conjunction with its slabs from the bright, new 1,400m² headquarters it moved into in the summer last year.

ASM Supplies Ltd

E20

Tall Trees
Bells Hill
Stoke Poges
Slough
SL2 4EG
☎ 020 3011 0622
info@asm-supplies.co.uk
<https://www.asm-supplies.co.uk>

David Coster, Gary Timpson, Greg Timpson

Advanced Stone & Masonry Supplies (ASM) is a leading distributor and manufacturer of specialty products used primarily in the tile, natural stone and paving industries in the UK and across Europe.

ASM is tailored to offering market leading brands such as Tenax, Dry-Treat, and Stain-Proof (known for their innovation, quality and performance) to

Stone Federation Great Britain (E30) & The Stone Village

Stone Federation is returning to the Natural Stone Show to host The Stone Village, its member-exclusive exhibiting area of the show.

The Ethical Stone Register, Women In Natural Stone, The Stone Academy and The Responsible Sourcing Pledge are just some of

the initiatives that you'll be able to find out more about by visiting the Stone Federation stand at The Natural Stone Show. The stand will also have on display samples of more than 60

Located right at the heart of the event, the Federation stand offers an opportunity for visitors to find out the latest industry developments, connect with the Federation's technical experts and discover how your company could benefit from Stone Federation membership.

As the trade association for the natural stone industry, the Federation is the natural stone source point, and its stand will give you the chance to find out more about how it can support, advise and connect your company with the best natural stone products and companies.



British stones supplied by Stone Federation Quarry Forum members, showcasing the range of colours and textures available in the UK's indigenous stones.

On the stand you will also be able to find out about the latest guides to best practice and technical data sheets from Stone Federation, including a new Bathrooms, Shower Enclosures & Wetrooms Code of Practice, the Snagging Guidance Document, and a guidance publication on CE Marking and its post-Brexit replacement, UKCA marking.

A-Z of exhibitors

the homeowner, professional users and some of the worlds most established tile and quarry/stone brands.

Although ASM was only established in 2018, do not be fooled into thinking that the team behind ASM could be considered 'new kids on the block of stone'. The Co-owners alone have more than 50 years' experience in the tile and stone industry and pride themselves on having an unbeatable knowledge base in the sector.

Authentic Stone

E50

Unit D2 / Al Rannah Estate
New Road
Newhaven
BN9 0EH
☎ 01273 516162
info@authenticstone.co.uk
https://www.authenticstone.co.uk

Evrin Bas

One of the largest importers of natural stone tiles in the UK, Authentic Stone specialises in sourcing tiles of all shapes, sizes and materials – travertine, marble, limestone, apple stone, Jerusalem limestone, granite... you name it, Authentic Stone has got it – and if it hasn't, it will find it for you.

When it comes to choosing the perfect stone for your designs and projects you would, of course, like to go for the optimal option. Authentic Stone understands customers would like to know who their stone specialist is and will want to learn more about the team. So, who is Authentic Stone? It is a company that consists of natural stone specialists and importers. With more than 25 years' experience of importing and selling quality stone tiles, bespoke stone pieces, various stone products, and porcelain tiles from all over the world, Authentic Stone is there to help with guidance and the provision of options to fulfil a customer's goal and dream flawlessly.

Bath Stone Company

E40 / E46

Stoke Hill Mine
Midford Lane
Limpley Stoke
Bath
BA3 7SP
☎ 01225 723792
info@bathstone.com
https://bathstone.com/

See representatives on stand

The beauty and consistency of the Bath Stone from Bath Stone Company's mines is exceptional, which is why it is specified for projects that need outstanding quality and reliability, for high profile new build and restoration projects across the UK those restoring period homes.



Blocks of top quality Bath Stone at Stoke Hill Mine (E40/E46).

Batu Marble Tile & Stone

D15

Kültür Mh. 75.Yıl Cd. No:74 K:I D:I
Kepez
Antalya
Turkey
☎ +90 248 317 13 40
export@batumermer.com
https://batumarble.com

See representatives on stand

Supplier of Galaxy Silver, Leopard Grey and Caretta Grey stones and stone products.

Baroque Dogaltas Turizm Sanayi ve Ticaret AS

D39

Cunur Mah 5467 SK 5B / 14 Merkez Isparta
Isparta
Turkey
☎ +90 532 254 33 24
mehmet_ozu06@hotmail.com
http://www.barokedogaltas.com

Mehmet Ozutemiz

Baroque Dogal Tas Turizm Sanayi ve Ticaret AS was established in 2018, opening its first marble quarry in Isparta a year later. The company exports block marble and polished slabs to many countries, especially China and India.

Whether you're searching for the latest **digital templating**, or time-tested and reliable **capital machinery**, or the very best **material handling** and **installation tools** - you're going to find them with LPE.

LPE scours the globe to bring leading suppliers to your workshop – make your choice from the sturdiest, **cutting-edge US technology** to the proven and time-tested quality you'd expect only from Italy. It's all here.



LPE
LEADING PRODUCTION EQUIPMENT

WHY CHOOSE US?

- ☑ Guarantee your customers the highest quality results by using the highest quality equipment.
- ☑ We understand that no two companies are the same and we strive to reflect this in all aspects of our customers service.
- ☑ We understand that cost is a major consideration for many customers, which is why we strive to offer competitive pricing on all of our products.

w www.lpe.ltd

e hello@lpe.ltd

p [+44 8455 440587](tel:+448455440587)

BCC Stone Ltd

D40

146 New London Road
Chelmsford
Essex
CM2 0AW
☎ 07785 526060
ds.bradley@bcc-stone.co.uk
https://bcc-stone.co.uk

Daniel Bradley, Nina Wong

This UK-based stone company has strong ties to the Chinese production market and many years of experience in the stone industry. BCC Stone offers premium quality stone products for internal and external use, including marble tiles, mosaics, cladding, paving, slabs and bespoke features, all available in a variety of sandstone, slate, granite, marble and cultured stone. The company's strong supply chain and UK stock-holding enable fast and efficient delivery to customers nationwide. Quality control is a priority, ensuring that every product meets the highest of standards. Builder, designer, or homeowner, this stone company is committed to providing you with the high level of service and quality you need to bring your vision to life.



Brazilian slate from Blue Sky Stone (F50).

Bluesky Stone

F50

Unit 79, Caxton Court
Garamonde Drive
Wymbush
Milton Keynes
Buckinghamshire
MK8 8DD
☎ 07886 940202
sales@blueskystone.com
https://blueskystone.com

Ravi Leo Onthriar, Sebastain Pohlmann

Bluesky Stone, established in 2004, specialises in Brazilian slate. It says it guarantees to deliver premium Brazilian slate at better value.

Bluesky Stone was established by Ravi Onthriar, a direct importer specialising in supplying Brazilian slate for paving slabs, tiles and slate hearths to trade and retail customers.

Ravi, based in the UK, and Sebastian, in Brazil, say they have integrated the teams in the two countries to provide a genuine end to end solution for customers. Whether you wish to buy container volumes direct from Brazil or smaller amounts from the UK inventory, Bluesky Stone has solutions to fit.

Bluesky Stone has warehouses in Colchester, Essex; Milton Keynes, Buckinghamshire; and Ballymena, Northern Ireland. Service offering to the trade: full and part loads; collections; split crate options; white label service direct to site.

It offers its customers good old fashioned customer service sprinkled with the right blend of technology – such as free social media support using its in-house media team and WhatsApp groups so customers can connect directly with the Bluesky team. Product is pre-ordered with dynamic pricing, locking in savings as stock leaves the factories.

BDS Marketing Research (QMJ) Ltd

D20

7 Regent Street
Nottingham
NG1 5BS
☎ 01761 433035
contact@bdsmarketing.co.uk
www.bdsmarketing.co.uk/

Rachel Brooks

BDS is an independent and innovative market research consultancy with more than 30 years' experience specialising in minerals, heavy building materials industries and waste sectors. BDS undertakes bespoke research projects for individual clients on a confidential basis including due diligence, analysis of markets, prices and competitors, new product development, and other market research. BDS would be keen to understand your requirements and discuss the potential for working in partnership with you.

Bloomstones London

F20

Unit G, Acorn Industrial Park
Crayford Road
Dartford
DA1 4FL
☎ 0203 7749683
info@bloomstoneslondon.com
www.bloomstoneslondon.com

Adam Reuvany, Gary Chipping

Purveyors of natural and composite stones and introducing induction hobs now being sold in conjunction with the slabs the company sells from the new 1,400m² headquarters it moved into in the summer last year.



Save time, make money and improve process

Talk to the Efficiency Experts and transform your business



Water filtration plants



3D digital templating



CNC tool optimisation

the Natural StoneShow 2023

Stonegate

Join us at Stands D45 & F49

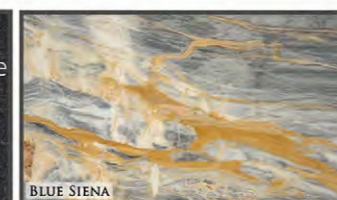
THE MARBLE & GRANITE CENTRE LTD.
THE EXPERTS IN NATURAL AND SINTERED STONE

View materials on our live material search engine at
www.themarbleandgranitecentre.co.uk

Large Stocks of Marble, Granite, Slate and Stone.
Recently Arrived:

Blue Siena
Giallo Siena Brocatello
Statuario 1st
Titanium Black
Belfast Classic
&

LAPITEC
NATURALLY ITALIAN



Troy Wharf, Old Uxbridge Road,
West Hyde, Rickmansworth,
Herts, WD3 9YB
Tel: 01895 820883

DRYTREAT
Excellence in sealing products



#ChooseNaturalStone

ANIET

ASSOCIAÇÃO NACIONAL DA INDÚSTRIA EXTRACTIVA E TRANSFORMADORA

PORTUGUESE STONE THE NATURAL PATH

WWW.ANIET.PT

PORTUGUESE STONE
THE NATURAL PATH
by ANIET

COMPETE 2020

PORTUGAL 2020

UNIÃO EUROPEIA
Fundo Europeu de Desenvolvimento Regional

Brachot Ltd

G16

Unit 1
Saltbrook Trading Estate
Saltbrook Road
Halesowen
West Midlands
B63 2QJ
☎ 01384 564315
✉ info.uk@brachot.com
www.brachot.com

Martin Dolby, Suey Ranaweera, Jamie Jansen-Wright,
Neil Cahannac, Christian Dolby, Rob Nayler

Brachot is a leading manufacturer and wholesaler in landscape and surface materials made from natural stone and blended materials. The family business from Deinze, in Belgium, has been active in the sector since 1901. The 4th generation is now at the helm.

With 20 company-owned quarries, seven production units and 15 distribution centres spread across Europe and Africa, Brachot manages the entire production process, from extraction and cutting to processing and distribution. This creates unlimited possibilities for the manufacture of blocks, slabs, tiles and accessories for interior and exterior use.

Among the stones supplied from Brachot's quarries is Kilkenny Limestone, authentic Irish bluestone, while Cameleon in South Africa provides the Nari Black and other African natural stones. Granitarn and Larvik Granite are granite quarries in France and Norway, respectively.

Material the company extracts from its own quarries combines with products purchased from trusted suppliers worldwide to offer its customers an extensive choice of materials.



Brachot (G 16)
Director Martin Dolby with the latest designs of Unistone Quartz.

By Fikri Stone Madencilik San Ve Tic Ltd Sti

G57

600 Evler Mh. Balikesir ASF. Uzeri Sol Taraf Cad. No:15
Balikesir 10200
Turkey
☎ +90 545 362 31 80
✉ info@byfikristone.com
www.byfikristone.com

Berfin Aysan

Formed on the island of Marmara, the homeland of marble, this company has been working the unique white dolomite stone of Marmara island for 30 years. Its marble factory is in the Bandirma district of Balikesir and produces 500,000m² of material a year.

Çiçek Marble (Çiçekmersan Mermer San Tic Ltd)

F46

Kisla OSB MAH. 30. Sokak No:1
Burdur
Turkey
☎ 0248 252 9879
✉ m.sahin@cicekmarble.com
www.cicekmarble.com

Mustafa Sahin

Çiçekmersan Marble Factory was established in 2005 and has been growing ever since. Previously, Çiçekmersan was a factory only, but now it has four active marble quarries and a factory working 24 hours a day. Çiçekmersan Marble has established itself as a valuable asset internationally with its exports. By producing a wide variety of architectural solutions in marble, Çiçekmersan Marble offers the beauty of stone to enhance the quality to living areas.



OUR NEW SHOWROOM IS NOW OPEN
The largest collection of exclusive natural stone in London

sales@stoneworldlondon.co.uk

Follow us on Instagram! @stoneworldlondon

www.stoneworldlondon.co.uk

**STONE
ATELIER**

Cidiam Group Srl

E16

42-44 Cutlers Road
South Woodham
Ferrers
Essex
CM3 5XJ
☎ 01621 742577
<https://dzambelis.co.uk>

Stella Zambelis, Jasper Zambelis

Cidiam's complete range of high quality Italian-made diamond tooling, including bridge saw blades, milling wheels and core drills, is exclusively available in the UK from D Zambelis. Popular products include the approved Dekton blade, Rosso, and the new Venus blade for quartz and granite that is taking Europe by storm.



Rosso from Cidiam on the stand of D Zambelis (E16).

Costruzioni Meccaniche Donatoni

E16

42-44 Cutlers Road
South Woodham
Ferrers
Essex
CM3 5XJ
☎ 01621 742577
sales@dzambelis.co.uk
<https://dzambelis.co.uk>

Stella Zambelis, Jasper Zambelis

For more than 60 years Donatoni has been providing automated processing lines for splitting, trimming, polishing and palletising stone. All processing lines are fully customised to your needs to improve productivity and reduce labour costs. Donatoni's complete range is available from D Zambelis.

Cunningham Masonry Cutting Machines

B19

18-21 Bluebell Business Estate
Sheffield Park
East Sussex
TN22 3HQ
☎ 01825 722041
dcunningham@masonrycuttingmachines.com
<https://www.masonrycuttingmachines.com>

See representatives on stand

Suppliers of a range of specialist machines for the rapid production of stonework.

Edge polishers from Comandulli (C 25).



CMG Machine Srl

E16

42-44 Cutlers Road
South Woodham
Ferrers
Essex
CM3 5XJ
☎ 01621 742577
www.dzambelis.co.uk

Stella Zambelis, Jasper Zambelis.

CMG Macchine's complete range of edge polishers for high productivity, from the standard Flotter for flat polishing to the Taurus for bullnosing and bevelling, is available from D Zambelis. Edge polishers are customisable to your requirements.

Comandulli Srl

C25

Via Medaglie D'Argento 20
Castelleone
(CR) 26012
Italy
☎ +39 0374 56161
info@comandulli.it
<https://comandulli.it>

Valentina Sacco

For more than 50 years Comandulli has been a leading producer of edge polishers in the stone industry. The company's mission has been to build robust, sturdy monobloc equipment that will stand up to mechanical stress without bending or warping, ensuring the best performance possible in terms of precision and durability of the components.

Made of high-quality steel and aluminium, these machines are given treatments to increase their resistance to wear and corrosion. Electronic components are strictly next generation, with the software that manages operations, settings and options developed in-house. These strategic advantages make it possible to integrate Comandulli equipment with automated production processes for quick programming updates.

COME AND SEE US
AT THE NATURAL
STONE SHOW
FROM THE 6TH -
8TH OF JUNE 2023
ON A1-C1 STAND

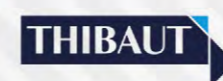


ON POINT
GROUP



ON POINT GROUP
SUPPLYING AND MAINTAINING
THE HEART OF YOUR BUSINESS

Brands we represent



D Zambelis Ltd

E16

42-44 Cutlers Road
South Woodham
Ferrers
Essex
CM3 5XJ
☎ 01621 742577
sales@dzambelis.co.uk
www.dzambelis.co.uk

Stella Zambelis, Jasper Zambelis

D Zambelis holds an extensive and exclusive range of diamond cutting tools, machinery, abrasives, glues and polishing tools for the stone industry.

Dal Forno

E16

42-44 Cutlers Road
South Woodham
Ferrers
Essex
CM3 5XJ
☎ 01621 742577
sales@dzambelis.co.uk
<https://dzambelis.co.uk>

Stella Zambelis, Jasper Zambelis

Since 1965 Dal Forno has pioneered lifting and handling requirements, providing customised solutions that meet the requirements of the customer and safety legislation. The company offers a variety of single, three-pad and multi-pad vacuum lifters, column and bracket cranes and electric chain hoists, all available from D Zambelis.

Dal Forno makes lifting and handling equipment sold in the UK by D Zambelis (E16).



Diamar Srl

E16

42-44 Cutlers Road
South Woodham
Ferrers
Essex
CM3 5XJ
☎ 01621 742577
sales@dzambelis.co.uk
<https://dzambelis.co.uk>

Stella Zambelis, Jasper Zambelis

Diamar makes specialist electroplated tooling for marble, sandstone and limestone. The tools are manufactured in Carrara, Italy, using a high concentration of diamonds for longer life and better performance. They are available in the UK exclusively from D Zambelis. Customised profiles and tools are available on request.

Diatex SpA

D16

Via Firenze, 4
Villaverla
(VI) 36030
Italy
☎ +39 0445 350338
info@diatex.it
<https://www.diatex.eu>

Paolo Stella/Luigi Ricci

Diatex Spa is a leading Italian producer of diamond tools for the ceramics and stone markets.

The company was created with the aim of producing the best tools possible for customer requirements. Located in the Sassuolo ceramic district of Italy, it makes high performance tools for the industry, meeting its requirements while also being competitive on the market.

The range of tools, 100% made in Italy, includes cutting discs for bridge saws, CNC profiling wheels, milling fingers and core drills for porcelain (gres) tiles and slabs.

Dimpomar

D5

Herdade da Vigaria
PO Box 6 – Vila Vicosa
7160-909
Portugal
☎ +351 268 408128
pcabral@dimpomar.com
www.dimpomar.com/en

Pedro Cabral

Dimpomar is leading player in the worldwide stone business, with 40 years of experience of supplying stone from quarry to project, shaping nature into architecture and lifestyle. That's four decades of knowledge in natural stone from Portugal and around the world – two generations of craftsmanship, technology, commitment and hard work, always aiming to be one step ahead.



Top quality, wide range of materials, excellent offers and competitive prices are our strength

COME,
ADMIRE,
SELECT

With more than 50 years of experience, we can supply high quality slabs from the best Italian and international quarries.

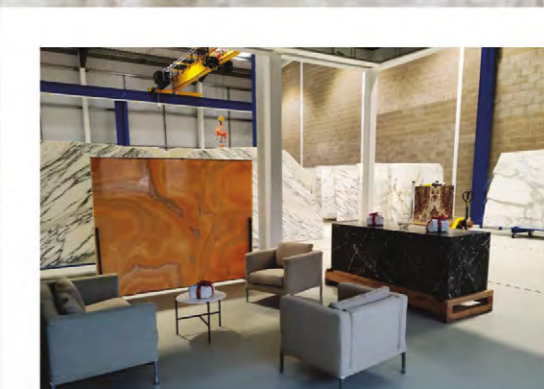
THE WAREHOUSE IN HERTFORDSHIRE

1000 square meters, with a large number of slabs ready for delivery. Marble, granite, stone, onyx from the most important quarries in the world. Walking among slabs and blocks of marble is the best way to find inspiration, customized solutions and to make any project unique.

You will be fascinated by natural stones, unique in the world, each with its own veins, chromaticity and shadows.



Visit us on stand D25



UK Solmar Limited

Unit 6 Raynham Road
Industrial Estate
Bishop's Stortford
CM23 5PB
Hertfordshire
United Kingdom



m.cioffi@uksolmar.co.uk
sales@uksolmar.co.uk
+44 01279 655 498

Visit our website & online warehouse with more than 300 materials in stock



Diresco

E1

The Stone Yard
Off Windham Rd
Chilton Industrial Estate
Sudbury
Suffolk
CO10 2XH
☎ 01787 881202
julie@mainstreamgranite.co.uk
www.diresco.be/en/

Meet the representatives on the stand

Diresco quartz incorporates Bio-UV Technology resulting in a quartz that not only looks great but is certified for its sustainability. In addition, the inclusion of UV stabilisers ensures that all colours can be Guaranteed for use indoors and out.



With 40 years of supplying stone from quarry to project, Dimpomar (D5) aims to be one step ahead.

Donatoni Machine

B25

Unit 2, Stacey's Yard
Station Road
Langley
Berkshire
SL3 6DB
☎ 01753 378715
office@stoneautomation.co.uk
www.donatoniemachine.eu

Meet the team on the stand

Donatoni has well over 50 years' experience in stone processing equipment and machinery, developing cutting-edge technologies for the processing of natural stone, quartz and sintered materials.

Visit the Donatoni stand (B25) to meet the team, see the latest developments and understand how a Donatoni can improve the efficiency of your stone fabrication and processing business.

Donatoni is represented in the UK by Stone Automation, a new stone tech distribution brand for the UK and Ireland supplying high quality products to some of the stone industry's leading stone fabricators and stonemasons. Its experienced team offers ongoing support for all of the brands, products and services that Stone Automation supplies.

Doultong Architectural Stone

F29

Doultong Stone Quarry
Chelynch Road
Doultong
Shepton Mallet
Somerset
BA4 4PZ
☎ 0797 6827095
sales@doultongstonequarry.co.uk
<https://doultongstonequarry.co.uk>

Colin Keevil

Suppliers of the award-winning Doultong Stone from Somerset.

Emmedue Machinery

E16

42-44 Cutlers Road
South Woodham
Ferrers
Essex
CM3 5XJ
☎ 01621 742577
sales@dzambelis.co.uk
<https://dzambelis.co.uk>

Stella Zambelis, Jasper Zambelis

Now available in the UK from D Zambelis, Emmedue has been producing machinery for the stone industry for more than 30 years. Its machines range from the entry level Astra 3 Axes to the Discovery 5 Axes Plus, using all the latest technologies.

English Stone Forum

D55

Channel Business Centre
Ingles Manor
Castle Hill Avenue
Folkestone
CT20 2RD
☎ 01308 856123
info@stonefed.org.uk
<https://englishstone.org.uk>

Don Cameron, Marli de Jongh, Steve Parry of the British Geological Survey

English Stone Forum, with Stone Federation Great Britain as its secretariat, encourages greater public interest in and awareness of the stone built heritage of England and the threats it faces.

the Natural StoneShow
COME VISIT US AT **STAND: E16**

Stocking the UK's widest and most **exclusive range of diamond cutting tools, machinery, abrasives, glues & polishing tools** for the stone industry.

CNC Workcenter
4 Axes Saw With 1/2 Tool Connection
5 Axes CNC Bridge Saw
4 Axes Saw With Motorised Tilting Head
Water Jet

T: 01621 742577 E: info@dzambelis.co.uk W: dzambelis.co.uk
42-44 Cutlers Road, South Woodham Ferrers, Essex CM3 5XJ

DZambelis

stone CIRCLE
Bespoke Fabrication for Over 50 Years
www.stone-circle.com

Fila Solutions Ltd

D26

Via Garibaldi, 58
35018 San Martino di Lupari
Padova
Italy
☎ +44 (0)75 5103 7941
filauk@filasolutions.com
www.filasolutions.com/eng

Mr Filippo Rampado

Fila takes care of the beauty of surfaces over time using innovative and sustainable methods, bringing wellness and balance into spaces brimming with life.

The company is a leader in the treatment, protection and maintenance of natural stone and ceramics. It is an international technical partner that can support all customers with an extensive assistance network, training programmes and major investment in research & development backing a solid commitment to innovation and sustainability.



Emmedue is one of the machinery brands now sold by D Zambelis (E16).

Genex Stones London Ltd

P67

Unit F, Industrial Estate
Park Royal
London
NW10 7LU
☎ 0203 161 3785
sales@genex.uk
www.genex.uk

Bernard Mouchantef, Sobhi Abou Chakra

Genex was established in Italy in the late 1970s and has delivered millions of square meters of marble around the world. It opened in the UK last year, wholesaling material to fabricators and stone contractors. It also offers consultation, quarry visits and block selection through its direct relations with many natural stone suppliers around the world.

Genex processes blocks into the slabs available from its warehouse in Park Royal, London, delivering value to projects.

One of the marbles from Italian specialist, Fontanili Marble (F16).



Fontanili Marble UK

F16

54-60 Baker Street
London
W1U 7BU
☎ 0203 579 1560
info@fontanilimarbleuk.com
<http://fontanilimarbleuk.com>

Filippo Fontanili

Fontanili is a marble company from Carrara, Italy, specialising in blocks and slabs, assisting architects and designers on their project specification. It has more than 10,000m² of space in its yard and ships its exclusive materials all over the world. Filippo Fontanili is looking forward to introducing those materials to visitors to the company's stand.

G S Diamant

E16

42-44 Cutlers Road
South Woodham
Ferrers
Essex
CM3 5XJ
☎ 01621 742577
sales@dzambelis.co.uk
<https://dzambelis.co.uk>

Stella Zambelis, Jasper Zambelis

G S Diamant is an Italian CNC tooling manufacturer that has been making customised and specialised tools for more than 20 years. Tools can be made from a drawing for processing the specific material being used – such as granite, Dekton and Taj Mahal. The complete range is exclusively available in the UK from D Zambelis.



QUARTZ



karma
living surfaces



ADAPT NATURE'S
CREATION TO
YOUR OWN

- DEDICATED TO QUALITY
- OVER 20 YEARS' EXPERIENCE
- SPECIALISTS IN HIGH QUALITY GRANITE, MARBLE, QUARTZ, SANDSTONE & PORCELAIN



www.globalgranite.co.uk



sales@globalgranite.co.uk



01322 660550



Italian company Genex (P67) opened a warehouse in London last year.

Gestra

B20

Tis 16
Janov
Dobruska
Czech Republic
☎ +420 494 665 675
info@gestracz.com
www.stonesplitters.com

Meet the team on the stand

Since 1992 Gestra CZ has been manufacturing high-quality splitting machinery for natural stone and concrete blocks. Gestra CZ offers reliable splitting machines of all sizes, conveyors, unique manipulators and other additional equipment. The equipment is durable and offers high productivity, proven by long-term operations worldwide. The main target of the company is an individual approach to each customer to offer the most effective solution according to the stone being processed.

Giacomini

E16

42-44 Cutlers Road
South Woodham
Ferrers
Essex
CM3 5XJ
☎ 01621 742577
sales@dzambelis.co.uk
https://dzambelis.co.uk

Stella Zambelis, Jasper Zambelis

Giacomini, founded in 1957 near the Swiss Alps, is an expert in manufacturing bridge, derrick and gantry cranes. Its products have been used in quarries in Switzerland for years and are available in the UK from D Zambelis. Representatives of the company will be available on Stand E16 to discuss your lifting solutions – because the company builds suitable cranes based on the needs of each customer.

GNT – Granitos do Norte

D10

Av. Principal N1115
Bem Viver
Marco de Canaveses 4625-070
Portugal
☎ +351 255 588770
jose.carlos@granitosdonorte.com
www.granitosdonorte.com

Joel Couto, José Pereira

With more than 25 years of experience in the extraction, transformation and trading of ornamental rocks and granite products, GNT-Granitos Do Norte has implemented continuous improvement in its processes, always looking for the perfect balance between tradition and innovation.

Harrison Goldman

F28

Airport House
Purley Way
Croydon
Surrey
CR0 0XZ
☎ 020 8689 4777
enquiry@harrisongoldman.com
https://www.harrisongoldman.com

Mark Goldman, John Sharman, Sarah Goldman, Rafael Perez Chamizo, Jesus Navarro

Independent Stone Consultant & Design Engineer Harrison Goldman provides a comprehensive service of design and detailing of natural stone, used as cladding, masonry, paving, internal lining and flooring, walling. It offers consultancy and CAD drawings. It carries out detailed condition surveys of stone cladding, masonry facades, pavements, interior wall linings and floors. It produces a comprehensive condition report with advise on cleaning, repair and restoration methods for modern and traditional stonework. Harrison Goldman provides designs and details of fixings and fixing systems, including

Organiser



Principal Sponsor



Co-organiser



Fair Sponsor



WELCOME TO INDIA'S BIGGEST STONE INDUSTRY EXPO

12th

INDIA **STONEMART 2024**
Stone for Sustainability

1 - 4 February, 2024
JAIPUR EXHIBITION &
CONVENTION CENTER (JECC), SITAPURA,
JAIPUR, RAJASTHAN, INDIA

BOOK
YOUR
STALL
TODAY!

EXHIBITOR PROFILE

- Stone quarry owners and stone processors
- Value added stone craft units
- Exporters & Importers of natural stone products & quartz stones
- Manufacturers, Traders & Exporters of stone related machineries & equipment, tools and consumables
- Transporters and other service providers for stone industry
- Testing and standardization organizations
- Trading and marketing organizations
- Chambers of commerce
- Associations related to stone industry
- Technical press and media

SCOPE

- Natural stones
- Stone products
- Quartz stones
- Natural stone related machinery, equipment, tools and consumables
- Services related to the natural stone industry, trade, press and associations
- Natural stone technology
- Safety & environment protection
- Conveying & transportation
- Packaging

For participation, contact:

Centre for Development of Stones (CDOS)
SP-8, Sitapura Industrial Area (Phase IV),
Sitapura, Jaipur – 302 022, Rajasthan, India
E-mail: info@cdos-india.com
stonemart@cdos-india.com
Web: www.cdos-india.com

Federation of Indian
Chambers of Commerce and Industry (FICCI)
Federation House, Tansen Marg, New Delhi – 110 001, India
Tel.: +91-11-23356658 (D), 23738760-70
Fax: +91-11-23359734 (D), 23721504
E-mail: girish.gupta@ficci.com, akshay.jain@ficci.com

Fair Co-Sponsors



secondary steelwork for all uses of stone. Draw on this technical expertise for wide ranging support for specifications, stone selection, pre-tender interviews and engineering calculations. For information on standards and industry codes of practice, Harrison Goldman is there to help you. The company has comprehensive Professional Indemnity Insurance and is associated with the Stone Federation GB and the Ethical Stone Register. It offers a one-stop solution for construction companies, stone contractors, heritage and restoration companies, property developers, the insurance sector, landscape and interior designers, architects, private property owners, or anyone else who needs it.

Having been helping clients since 1993, you can be confident in receiving expert advice and excellent design and professional guidance to ensure the successful development and completion of your project.

Historic England

D56

The Engine House
Fire Fly Avenue
Swindon
SN2 2EH
☎ 01793 414700
customers@HistoricEngland.org.uk
www.HistoricEngland.org.uk

Alison Henry, Jessica Hope, Clara Willett + other members of the Technical Conservation Team

Historic England is the lead body and government advisor about England's historic built environment. It protects and champions the historic sites that help define England as a nation, preserving the stories they tell, the ideas they represent and the people who lived and worked among them.

Huazhong Stone Industrial Co Ltd

E9

Jiahe Section
Dongxin Village Committee
Hekou Street
Yuncheng District
Yunfu City
Guangdong 527300
China
☎ +86-13826890307
cindy@hzquartz.com
www.hzquartz.com

Cindy Chan

Huazhong Stone Industrial Co Ltd set up a factory in Yunfu, China, in 1987 and over more than three decades of development has grown into a group with nearly 1,000 staff and a factory covering 150,000m². Production includes the Huahe quartz fabrication unit opened in 2014 and incorporating the latest fully-automatic quartz stone production line with 300 highly trained employees managing the end to end delivery of its products.

The company aims to reach the middle and high-



Clara Willett (right) and Alison Henry (centre) of Historic England talk to Claire Wallbridge of the Natural Stone Industry Training Group. Clara and Alison will be on the Historic England stand (D56) at the Natural Stone Show.

end of the market, with its research and development team evolving the company's products. It has earned a good reputation internationally and its products are sold worldwide.

Icon (The Institute of Conservation)

D60

106-109 Saffron Hill
London
EC1N 8QS
m.nelles@icon.org.uk
www.icon.org.uk

Dr Michael Nelles

Icon raises awareness of the cultural, social and economic value of caring for heritage and champions high standards of conservation. Its vision is to protect, preserve and promote treasured cultural heritage through cultivating skilled conservation professionals, supporting meaningful collaboration across the cultural heritage sector, and delivering public benefit through engagement and advocacy.

ICR Sprint

E16

42-44 Cutlers Road
South Woodham
Ferrers
Essex
CM3 5XJ
☎ 01621 742577
sales@dzambelis.co.uk
<https://dzambelis.co.uk>

Stella Zambelis, Jasper Zambelis.

ICR Sprint has been supplying the UK for over 25 years, exclusively through D Zambelis, with glues, waxes, sealers and enhancing products – chemicals that can be used on both natural and synthetic stone and porcelains.

India Stonemart 2024

C57

Federation House
1, Tansen Marg
New Delhi 110001
India
☎ 0091 11 23736191
info@cdos-india.com
<https://stonemart-india.in>

See representatives on stand

India Stonemart is India's national stone exhibition, taking place 1-4 February in Jaipur Exhibition & Convention Centre 2024, presented in conjunction with the Federation of Indian Chambers of Commerce and Industry (FICCI).

Institute of Historic Building Conservation (IHBC)

D58

Jubilee House
High Street
Tisbury
Wiltshire
SP3 6HA
☎ 07814 976117
director@ihbc.org.uk
www.ihbc.org.uk

Sean O'Reilly, Michael Netter

The Institute of Historic Building Conservation (IHBC) is a leading professional body for built and historic environment practitioners working for the conservation, care, regeneration and future of the country's built heritage. The Institute exists to establish, develop and maintain the highest standards of conservation practice, to support the effective protection and enhancement of the historic environment and to promote heritage-led regeneration and access to the historic environment for all.

Ilpa

E16

42-44 Cutlers Road
South Woodham
Ferrers
Essex
CM3 5XJ
☎ 01621 742577
sales@dzambelis.co.uk
www.dzambelis.co.uk

Stella Zambelis, Jasper Zambelis

Ilpa produces a wide range of specialist chemicals for natural stone, all available from D Zambelis.

Integra Adhesives

E56

IPS Adhesives
New York Way
New York Industrial Park
Newcastle upon Tyne
NE27 0QF
☎ 0191 2590033
<https://integra-adhesives.co.uk>

David Bodley, Philippe Belot, Gary Holt, Louise Scott

Integra Adhesives, a brand of IPS Adhesives, were created by surfacing professionals looking for better solutions to countertop assembly. After more than 15 years, Integra products are among those at the forefront of the industry with a range of solutions developed specifically for countertops. The company relentlessly pursues new, innovative formulations that, without sacrificing performance, aim to keep resetting the bar.

Italmecc Sri

E16

42-44 Cutlers Road
South Woodham
Ferrers
Essex
CM3 5XJ
☎ 01621 742577
sales@dzambelis.co.uk
<https://dzambelis.co.uk>

Stella Zambelis, Jasper Zambelis

Italmecc has specialised in water clarification and dust extraction worldwide since 1985. In collaboration with its UK representative, D Zambelis, it is able to offer a wide range of solutions that are at the heart of a factory's production.

The range goes from wet dust booths (Airbox) to complete water clarification systems, with flocculent chemical dosing stations, inverter booster pumps, silos and submersible pumps.

Johnston Quarry Group

E40 / E46

Westfield Lodge
Great Tew
Chipping Norton
Oxfordshire
OX7 4BT
☎ 01608 489900
info@jqgroup.co.uk
www.jqgroup.co.uk

Mark Swift, Matthew Hawker, Brendan Low, Maurice O'Donoghue

Johnston Quarry Group is a major supplier of quarried and mined block stone from the South of England, offering a diverse range of high-quality natural stone including Cotswold Limestone, Jurassic Limestone and Great Tew Ironstone from quarries in Gloucestershire, Oxfordshire and Lincolnshire.

The group also owns Bath Stone Company, which supplies Stoke Ground Bath stone. The beauty and consistency of the Bath stone from its mines has made it the premier choice for many high profile new build and restoration projects across the UK.

Johnston Quarry Group also operates a stone processing operation, Building Stone Ltd, with sites in Oxfordshire and Gloucestershire. This well equipped, professional team in the South of England has been producing stone and masonry products for over 25 years.

On the Johnston Quarry Group stand the company will be joined by sister company Carrières du Hainaut, which extracts Belgian Blue limestone from one of the country's largest quarries. Belgian Blue is a high-grade, hard dimension stone that can only come from Belgium. It can be found in infrastructure and residential projects across the globe.

Julipetra Lda

G19

Casal Do Guerra 72
Apartado 162
Benedita 2475-019
Portugal
☎ +351 262 929766
geral@julipetra.com
www.julipetra.com/en/home

Sergio Figueiredo

Julipetra has been active in the stone industry since 1981, extracting and transforming ornamental stone. It has invested in the latest machinery and technology to produce with efficiency and quality, and Julipetra is now a national and international referenced company working with Portuguese limestones.

British stone from the Johnston Quarry Group (E40 / E46).

**KGF Granites**

C50

No 2 North Crescent Road
T. Nagar
Chennai
Tamilnadu 600017
India
☎ +91 988 4035051
ravi@archeangroup.com
www.kgfgranites.com

Ravi Pendurthi

KGF Granites has been extracting natural stone from its quarries across south India since 1984 to provide the global market with granite products. The products include cobblestones, pavers, steps, kerbs, veneers, pool copings, street furniture such as benches and items such as bird baths.

With three factories employing more than 100 people, KGF Granites caters for architects and builders looking for cut to size and custom made materials for projects. The company's cobbles and kerb are hand-made and manually dressed by artisans using skills passed down through the generations to give an authenticity that cannot be matched. KGF Granites has been a premier provider of landscape and hardscape products to the US, Norway, Denmark and the Middle East for the past 35 years.

Komurcuoglu Mermer Tarim Urunleri San Ve Tic A.S

F36

Korucuk Mh. Komurcuoglu Cd. No:10/1
Pamukkale
Denizli
Turkey
☎ +90 533 271 0531
gulcin.celikhan@traverten.com.tr
www.komurcuoglu.com.tr

Gülçin Çelikhan

Komurcuoglu Mermer is a family-owned company founded in 1982 in Denizli to extract and process travertine. The company promises a reliable, honest and high-quality service guaranteeing customer satisfaction.

Using the latest technology for time-saving and quality of product, the company has been able to export primarily to the United States and Europe, but also to the rest of the world.

Lamar Ceramics

C15

Unit 2, 277 Clough Street
Hanley
Stoke-on-Trent
ST1 4BA
☎ 07365 774577
sales@lamarceramics.co.uk
www.lamarceramics.co.uk

Rajan Adwani

Lamar is a globally recognized brand that is poised to launch in the United Kingdom following its significant success in Turkey and Vietnam. The

brand offers a diverse range of large-format porcelain slabs, outdoor porcelain tiles, natural stones, and bricks. The products are available in various sizes, thicknesses, and colours, making it easy for customers to choose the perfect option that fits their needs. All the products are versatile, durable, and of high quality.

Lamar offers a distinctive collection of large format (1600mm x 3200mm) porcelain slabs that provide an excellent option for countertops and walls in all living spaces. The designs from Lamar emulate the natural beauty of marble and offer a refined aesthetic to interiors.

Lamar also offers an exceptional collection of 20mm thick full body outdoor porcelain tiles in various sizes. These high-quality ceramic tiles are treated to endure harsh outdoor temperature extremes, moisture, and UV radiation.

Lamar products are designed to meet the needs of all applications, from residential to commercial, indoor to outdoor. For patios, kitchens and bathrooms, Lamar has got you covered.

Lapitec SpA

C60

Via Bassanese 6
Vedelago
(TV) 31050
Italy
☎ +39 0423 7603811
info@lapitec.com
www.lapitec.com

Ms Michela Callegari, Mr Francesco Giannini

Lapitec is a material with unique qualities, as demonstrated by its 25 registered patents. Lapitec is sintered stone, a timeless surface made from a selected mixture of natural and what it describes as incredibly pure minerals, ideal for adding a touch of charm to any environment.

It is a 'full-bodied' material, meaning that its exterior and interior are identical. It does not have a printed surface. It is produced in large slabs in a range of thicknesses.

Lapitec is a material that can be used in a number of ways, in various different worlds: from kitchen worktops and bathroom vanities to wall cladding, paving for swimming pools, spa areas and on yachts.

Leading Production Equipment Ltd (LPE)

C20

Unit D3
Grovehill Industrial Estate
Annie Reed Road
Beverley
HU17 0LF
☎ 0845 5440587
hello@lpe.ltd
www.lpe.ltd

Carl Sharkey, Andy McCallion, Dean Bell, Andy Dyche

The very best fabricators expect to have the very best equipment to help them deliver only the very best results. And LPE says whether you are searching



for top quality digital templating equipment, capital machinery or handling and installation tools, you're going to find them with LPE.

LPE brings a global reach to your workshop with sturdy, cutting-edge US technology and the proven, time-tested quality you'd expect only from Italy. It's all at LPE.

LPE says if you demand excellence, you are invited to come and find it on the LPE stand.

LPE Group (C20) says if you demand excellence you should visit its stand.

Lithofin

F35

Wood End
Prospect Road
Alresford
SO24 9QF
☎ 01962 732126
sales@lithofin.co.uk
www.casdron.co.uk

Peter Waldron, Bob Sewell, Maurice Lewis

Founded in Germany in 1953, Lithofin is a leading producer of sealing, protecting and maintenance products for tile and stone surfaces. It is known in the industry for high quality, effective products that offer a professional solution to cleaning and sealing stone and tiles.

Recognised as an international authority, Lithofin and its products have become relied upon by experts demanding product quality with proven results.

Quality of product and service is at the heart of Lithofin, with full technical support available for the comprehensive product range. Lithofin technical experts are available to advise on all aspects of specification, installation, restoration and problem solving for both professional and household customers, for indoor and outdoor surfaces. Lithofin is associated with: Stone Federation Great Britain; The Tile Association (TTA); Royal Institute of British Architects (RIBA) CPD Providers Network.

Mainstream Granite

E1

The Stone Yard
Off Windham Road
Chilton Industrial Estate
Sudbury
CO10 2XH
☎ 01787 881202

julie@mainstreamgranite.co.uk
https://www.mainstreamgranite.co.uk

Meet the team on the stand

Mainstream Granite is an importer and distributor of granite, marble, quartz and quartzite. It sources and stocks a wide range of premium stones personally selected from across the globe and delivered nationwide in the UK. Additionally, it can service bespoke orders, importing specific quantities of material into the UK for distinct projects, residential or commercial, interior and exterior.

Manzelli

AI, BI, CI

Unit 7, Turnpike Industrial Estate
Nottingham
NG31 7DF
☎ 01476 573 827
bruno@onpointengineering.co.uk
www.onpointengineering.co.uk

Meet representatives on the stand

Lifting equipment from On Point Engineering.

Meridian Diamond Products

BI9

18-21 Bluebell Business Estate
Sheffield Park
East Sussex
TN22 3HQ
☎ 01825 722041
dcunningham@masonrycuttingmachines.com
www.masonrycuttingmachines.com

Meet representatives on the stand

Represented by Cunningham Masonry Cutting Machines.

Modamar Marble

G27

Iscehisar Mermer Ihtisas Org.San.Bol.4b Cad.No:5
Iscehisar
Afyonkarahisar
Turkey
☎ +90 532 218 36 21
rifat.ozdilek@modamarmarble.com
www.modamarmarble.com

Rifat Ozdilek

Modamar Marble is a producer of exclusive marble, limestone, travertine, dolomite, and onyx products

in Turkey, with its own factory and experience and knowledge in the natural stone industry for over 15 years. Its goal is to provide its customers with excellent service and the finest quality materials at the best prices.

MP Treatment UK

P70

92 Gloucester Road
Barnet
Hertfordshire
EN5 1NA
☎ 0208 2163539
info@mpreatmentuk.co.uk
www.mptreatmentuk.co.uk

Pino Fera

Supplying machinery, treatment chemicals, diamond tools and consumables to the natural stone trade, MP Treatment's mission is to deliver high quality products, which it does by having them personally tested by Pino Fera, known to many as the 'Stone Guru'.

Pino was born and raised in Italy, where he developed a love for natural stone and the

craftsmanship involved with this luxurious material. He moved to London to work on large scale projects. MP Treatment was incorporated in 2014.



Need help with planning? From specialist dimension stone to large-scale aggregate operations, MPG Stone (E59) has successfully won planning permission for its clients.

MPG Ltd

G55

Oakdene House
Cottingley Business Park
Bingley
BD16 1PE
☎ 01274 884599 / 884699
jessica@mpgyorks.co.uk
www.mpgyorks.co.uk

Jessica, Mark, Jill

Experts on all things minerals, waste, renewables, planning, permitting, environment, and compliance.

Full bodied Lapitec (C60) is not like other materials, as its 25 patents testify. The latest, marble effect designs are being shown.

MPG Stone India

E59

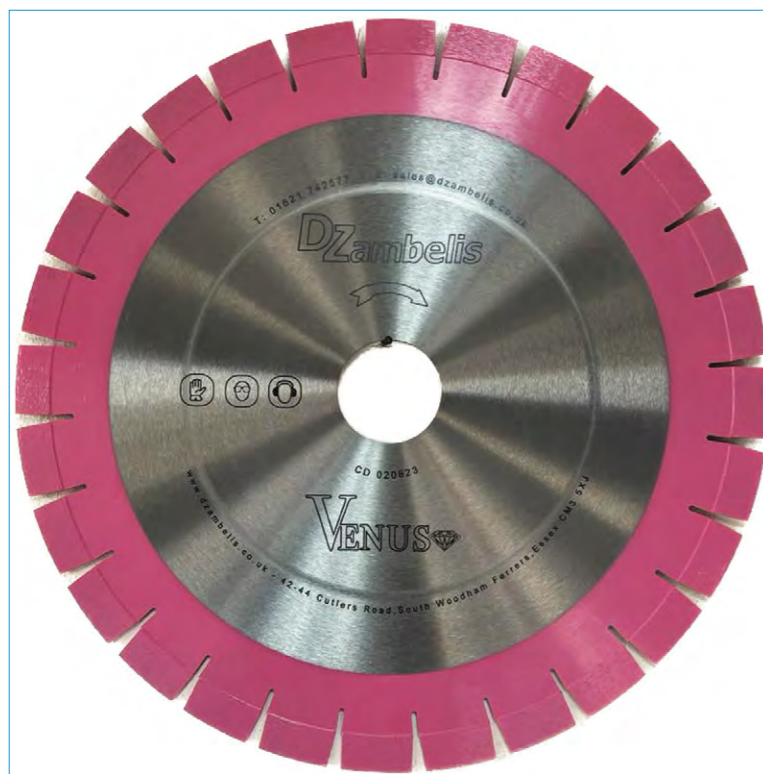
38-R Model Town
Rewari (Haryana) 123401
India
☎ +91 1274 225518 / 0752 064 1628
info@mpgstone.com
https://www.mpgstone.com

Jugnu Goyal

MPG Stone is a prominent natural and engineered stone manufacturer and supplier with over 35 years of experience. It offers an extensive range of stones, including sandstone, limestone, granite, marble, slates, porcelain, and quartz. Its cutting-edge technology and expertise in extracting raw materials enables it to produce top-quality finished products by following all ethical practices of industry standards.

Its stones offer not only functional appeal but also provide a stylish touch, making them ideal for both residential and commercial projects. MPG Stone believes stones are not mere building materials but works of art that add value, beauty, and elegance. The company says it is committed to delivering exceptional client service, superior quality products, timely delivery, and competitive prices. Its experienced professionals ensure customised solutions from multiple stockyards in the UK. It emphasises its provision of fine quality stone products that have enabled it to grow to become a global exporter by contributing to the global community through sustainable practices.





MVC – Portuguese Limestones

F5

IC2 (ENI)
Km 98
Ataija De Cima
Alcobaça 2460-713
Portugal
☎ +351 262 505060
geral@mvc.pt
www.mvc.pt/en

Ricardo Rebelo, João Neves

MVC–Portuguese Limestones is a natural stone extraction and transformation company that has been operating for over 25 years from Portugal's limestone capital. It strongly believes in the strengths of the limestones it supplies from its nine quarries, with the many uses of the stones showing they are among the best natural stones for a wide range of uses.

Having its own quarries assures you of rock solid quality control from extraction through to packaging and shipping.

The company is equipped with cutting edge technology and skills to help you shape your next big project. It specialises in both standard-sized tiles and slabs and cut-to-size.

The D Zambelis (E16) Venus quartz and granite blade, developed from the popular Platinum blade from Cidiam Group. Available in a range of diameters and suitable for a variety of bridge saws, it can achieve a cutting rate of three-to-four linear metres per minute.

Natural Stone by Safa Ltd

P15

Unit 1, The Workshops
Greenfield Road
Pulloxhill
Bedfordshire
MK45 5BF
☎ 01525 213977
sales@naturalstonebysafa.co.uk
www.naturalstonebysafa.co.uk

Mo M, James C, Jermaine F, Raz A

Natural Stone by Safa was started in 2021 with, it says, a passion for people, design, and customer service that is combined with a family history steeped in quarrying. The company says it has lately received a big order of marble slabs from a commercial construction company, which was fulfilled on time. It has already confirmed an order for the customer's next project.

Natural Stone by Safa is in the process of testing out new machines at its factory to produce tiles from 10mm to 30mm thick. It has also been exploring other sources of marbles and onyx to expand to product offering.

Natural Stone by Safa buys marble and onyx directly from the quarries. With no additional distributors or middlemen involved, and full visibility of the stone's journey from quarry to the UK showroom, the company says it is able to pass significant savings on to its customers without compromising on quality.

Natural Stone Show 2025

I 58

7 Regent Street
Nottingham
Nottinghamshire
NG1 5BS
☎ 0115 945 4367
stoneshow@qmj.co.uk
www.stoneshow.co.uk

David Fisher, Charlotte Stacey

The only event dedicated to the stone industry in the UK and Ireland returns to ExCeL in 2025 on 3-5 June. Reserve your stand at the 2025 event on stand I 58, where you will find representatives of the Natural Stone Show team.

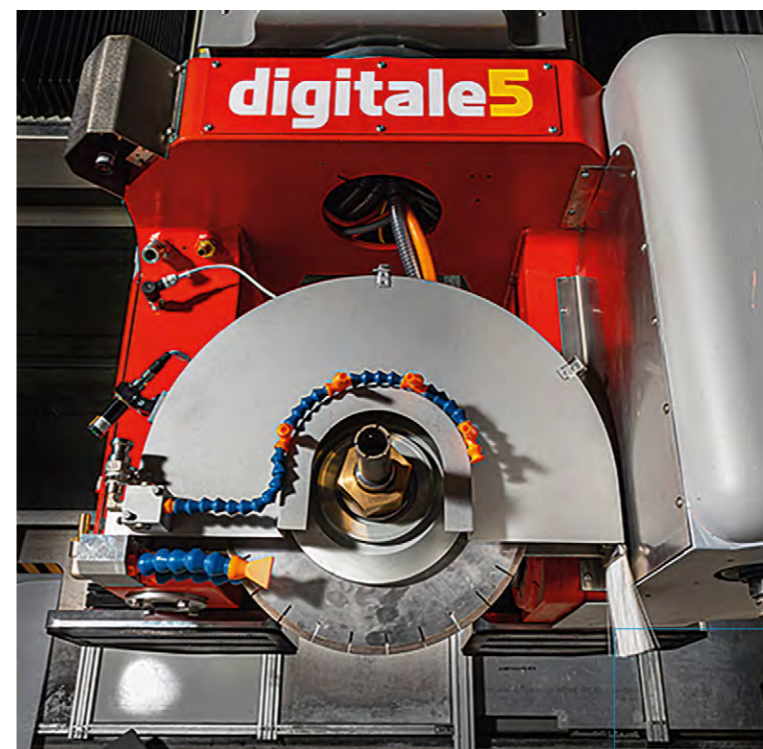
Natural Stone Specialist

D20

7 Regent Street
Nottingham
Nottinghamshire
NG1 5BS
☎ 0115 945 3898
nss@qmj.co.uk
www.stonespecialist.com

Eric Bignell, Clare Howcutt-Kelly, Charlotte Stacey

No longer just a printed magazine with a provenance dating back to the 19th century, the *Natural Stone Specialist* platforms now major on the



website, up-dated as news breaks and shared on social media, and with a round up twice-monthly in the *Natural Stone Bulletin*, emailed directly to more than 20,000 subscribers.

The powerful Digital5 from Omag is sold in the UK by D Zambelis (E16).

Nicolai Diamant

E16

42-44 Cutlers Road
South Woodham
Ferrers
Essex
CM3 5XJ
☎ 01621 742577
sales@dzambelis.co.uk
www.dzambelis.co.uk

Stella Zambelis, Jasper Zambelis

Nicolai Diamant is a leading manufacturers of CNC tooling. Its products are sold worldwide and are available in the UK from D Zambelis. The company has many years of experience, producing tools for traditional methods of working while always following the trends and needs of international markets.

Natural Stone Specialist (D20) is not just a printed magazine. It is online, on social media and delivers Bulletin updates directly to your In-box.



Nikolaus Bagnara SpA

D35

Via Madonna
Del Riposo 34
Appiano
BZ 39057
Italy
☎ +39 0471 662109
hannes.pfeifer@bagnara.net
https://bagnara.net

See the representative on the stand

Nikolaus Bagnara is a third generation family-run natural stone processing company founded in 1948. Today, it is a leading international company involved in the production, distribution, and processing of natural stone.

The accessibility of Bagnara-owned quarries, supported by strategic agreements with manufacturers worldwide, ensures the availability and prompt delivery of more than 950 different natural stones of superior quality.

The materials are first stored in Rivoli Veronese and Massa Carrara's warehouses and then transferred for processing to the production plant in Cavaion Veronese, Veneto, where they are transformed into slabs. Every day 3,200m² of slabs are processed, ensuring a constant supply of material in more than 10 surface finishes.

Bagnara's strength is its vision and expertise along the entire production chain of natural stone, allowing the company to support customers at every stage of their work.

Deep knowledge of the raw material is essential when choosing natural stone: experience with manufacturing from a technical and aesthetic point of view; understanding of processing customised artifacts; skilled and specialised technicians to carry out assembly; constant assistance. This all contributes in a decisive way to the success of a project within deadline, leading to strengthened relationships with collaborators. A serious and reliable partner, offering assistance and 360-degree support to every customer, from private and artisan to the architect, designer and developer of the largest projects.

O.M.G.M. Bellani

E16

42-44 Cutlers Road
South Woodham
Ferrers
Essex
CM3 5XJ
☎ 01621 742577
sales@dzambelis.co.uk
www.dzambelis.co.uk

Stella Zambelis, Jasper Zambelis

OMGM, represented in the UK by D Zambelis, is able to produce edge polisher options from flat polishing to advanced edge profiling. The popular Linea model is a compact flat edge polisher with eight heads and two upper and two lower bevels – perfect for any sized factory.

Omag SpA

E16

42-44 Cutlers Road
South Woodham
Essex
CM3 5XJ
☎ 01621 742577
sales@dzambelis.co.uk
dzambelis.co.uk

Stella Zambelis, Jasper Zambelis

Omag, established in 1979, is an industry leader in stone machinery, able to produce fully customisable milling machines for masonry work, such as the Blade5 bridge saw, CNC workcentres and water jets, all using the latest mechanical technology and software.

The most popular model is Digitale5, a monobloc bridge saw, complete with a camera for vein-matching, vacuum suctions to move pieces, and probes to measure material and tool thicknesses for maximum cutting performance. All Omag machines are available in the UK from D Zambelis.

On Point Engineering

AI / BI / CI

Unit 7 Turnpike Industrial Estate
Nottingham
NG31 7DF
☎ 01476 573 827
enquiries@onpointengineering.co.uk
www.onpointengineering.co.uk

Bruno Machado and his team

On Point Engineering specialises in the supply, repair, service and maintenance of CNC machinery for the stone industry. Working alongside leading manufacturers, it offers 24-hour call out support, online remote assistance, training and OEM spare parts in stock. Its qualified engineers have a wealth of experience in the stone industry. The aim of On Point is to create a long-term relationships with customers by offering high quality machinery and service throughout a machine's lifetime.

Optidrive

PI4

Wijgmaalsesteenweg 108
Leuven 3012
Belgium
☎ +32 16 300710
info@optidrive.be
www.optidrive.be

Raf Dequeker

Optidrive supplies robotic systems to stone processing companies. These robots are the physical link between the various processing machines that saw, mill, sand and polish stone products... but they do even more than that. The Optidrive robots also transmit information about each specific product or stone to be processed. And this is important because no stone and no product is the same. It is the data exchange



This was the On Point Engineering stand in 2019. On Point supplies, repairs, services and maintains CNC machinery for the stone industry, offering a 24-hour call out. It is back this time on stand AI / BI / CI.

that makes Optidrive robot solutions intelligent. But that doesn't mean they are not user-friendly. Optidrive ensures all its products, no matter how sophisticated, are easy to understand and operate.

Ozerler Marble

D50

Fevzi Cakmak Mah Ayranci Sok No.13 Pendik
Istanbul
Turkey
☎ +905 050945461
yusuf@ozlermermer.com
www.ozlermermer.com

Yusuf Ozer

With an area of 17,000m² in Bilecik Osmaneli that has an annual stone processing capacity of 350,000m², Ozerler Marble processes the blocks from its own and other reputable quarries in the best manner to give marble the value it merits. In its implementation centre in Istanbul-Pendik, it performs the follow-up running of project preparation and implementation services with its technical staff.

Pardais Granites

E19

Estr. da Zona Industrial 235
Alpendorada e Matos 4575-060
Portugal
☎ +351 255 611682
info@pardais.com
www.pardaisgranites.com

See representatives on stand

Alpendorada, Alpendorada Yellow, Ariz and Mondim are just some of the granites used to make products such as drainage channels, tactile paving and cubes, both in standard and bespoke sizes, for the landscape market.

Piano Tile

D19

Iscehisar OSB Ma.4/A Cad.Blok:13/1 Iscehisar
Afyonkarahisar
Turkey
☎ +90 272 218 51 52
info@pianotile.com.tr
www.pianotile.com.tr

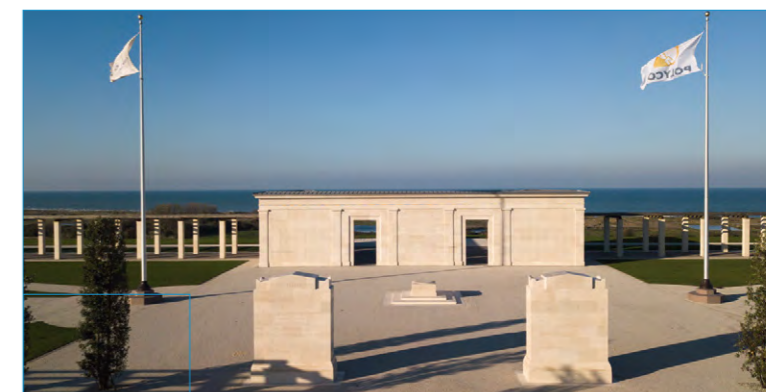
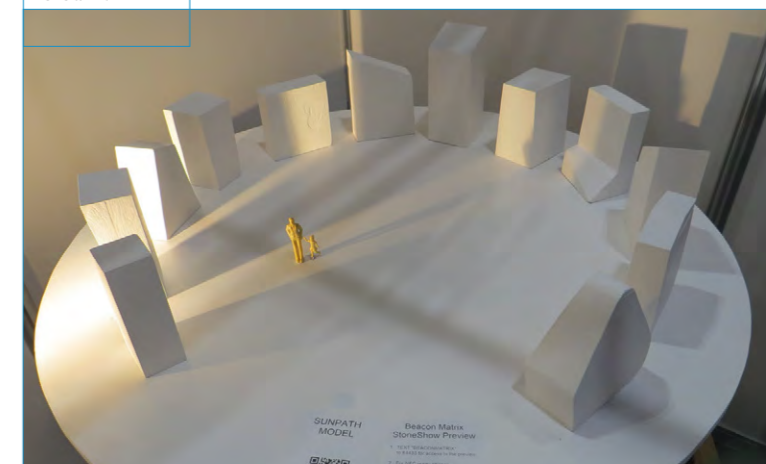
Tezcan Avsar

The biggest strength Piano Tile believes it has is its production capacity, continually expanding in the field of natural stone and ceramic mosaics. It is customer-oriented to achieve ever greater goals and be indispensable to its current customers and new business partners. It has worked extensively in the USA, Australia and Europe.



Planet Granite is now offering block cutting services, while the new company Planet Sculpture is offering the services of its four robots.

A model of Portland Sculpture & Quarry Trust's 'Memory Stones' on the Dorset island of Portland.



The British D-Day memorial in Normandy for which Polycor supplied the stone.

Planet Granite / Planet Sculpture

E57

Devitts Green Farm
Devitts Green Lane
Arley
Coventry
CV7 8GF
☎ 01676 937686
sales@planetgranite.co.uk
www.planetgranite.co.uk

Steve Murphy, Stevie Murphy

Explore the possibilities of the robots of Planet Sculpture. Planet Granite also introduces a block sawing service to the trade following its purchase of a Breton wire saw.

Polycor

G25

76, Saint Paul Street
Quebec City
Quebec
Canada
☎ +1 418 692 4695
valerie.bergeron@polycor.com
<https://www.polycor.com>

Valerie Bergeron

Polycor is one of the world's leading dimensional natural stone quarriers and fabricators. By joining

forces with other industry pioneers, it provides customers with centuries of stone expertise for bathrooms & kitchens, cladding, and hard landscaping.

Portland Sculpture & Quarry Trust

C59

Drill Hall Gallery & Stone Work Space
Easton Lane
Portland
Dorset
DT5 1BW
☎ 01305 826736
psqt@learningstone.org
<https://learningstone.org>

Hannah Sofaer MA (RCA), Imogen Long, Michael Sinclair, Tim Bates, Matthew Jordan, Dr Clair Chinnerly

Portland Sculpture & Quarry Trust is marking its 40th year of courses for all levels of skills in carving stone in its place of origin, celebrated in collaboration with The Worshipful Company of Masons, which is sharing the stand.

There will be stone carvers demonstrating work for 'Wren's Way' and the 'Green Corridor' legacy project and a student project with the University of Arts London. There will be a CAD model with exceptionally detailed drawings of an architrave at 81 Fleet Street, informed by Paye Stonework & Restoration, and examples of the Architectural Association 'Bricoleurs' student project. There will also be carvings by Dr Janice Howard, Senior Lecturer of Fine Art at Oxford Brookes University.

Prodim

P69

Lage Dijk 26
BZ Helmond 5705
Netherlands
☎ +31 492 579050
info@prodim-systems.com
www.prodim-systems.com

Meet the team on the stand

Prodim measures it all. The Proliner has an established reputation for being an exceptionally accurate, efficient and flexible digital templating device. The Proliner is the core of every Proliner Stone package, perfect for measuring a wide variety of projects, from countertops, with or without backsplashes, to fully tiled bathrooms.

With four available versions of Factory software at increasing levels of functionality, businesses can choose the software that best matches their requirements. The innovative Factory Draw Advanced, for instance, provides an easy 'as-is' multiple plane design with insightful 2D / 3D views and solid collision alerts. It can easily identify potential problems and it helps making design decisions. While with Factory Full Fabricator you can even build a digital slab library and match all your stone slabs in your design.



ExCeL London exhibition centre, where the Natural Stone Show and Hard Surfaces exhibitions are held. To book a stand at the 2025 Natural Stone Show or Hard Surfaces visit stand I58.

Rayon Stone Spain

D9

Mahaj Ryad Imm 2
App N10 Hay Ryad
Rabat I 1000
Morocco
☎ +34 662 01 01 99
contact@rayonstone.com
www.rayonstone.com

See representatives on the stand

Unique grey and buff stones for interiors where design meets comfort.

Saint-Astier

C26

28 Bis Route de Montanceix
La Jarthe
Saint Astier 24110
France
☎ +33 788872274
s.kirk@saint-astier.com
<https://stastier.co.uk>

Sally Kirk

An independent family business for over a century, Saint-Astier has been producing natural hydraulic limes renowned for their excellence for four generations. It is a story of passion and know-how inherited and shared by around 150 collaborators and technicians.

Saint-Astier's limestone is of outstanding quality. Since the beginning, Saint-Astier has worked its own quarry, located on a limestone basin that extends over

350 hectares. This is an almost inexhaustible deposit which, even at the depth of 100 metres, consistently delivers its unique mineralogical properties.

Saint-Astier limes combine tradition and modernity, offering a wide range of products, from pure natural hydraulic limes to the most specific mortars. The company's philosophy is to choose precisely the right product for each substrate, carefully developing special product recipes for restoration and renovation through an excellent knowledge of the raw material, natural hydraulic lime, and an insatiable taste for innovation.

Sait

E16

42-44 Cutlers Road
South Woodham
Ferrers
Essex
CM3 5XJ
☎ 01621 742577
sales@dzambelis.co.uk
www.dzambelis.co.uk

Stella Zambelis, Jasper Zambelis

Sait offers a complete range of abrasives that have been used in the stone industry around the world for decades. They are available in the UK from D Zambelis. If you visit the D Zambelis stand (E16) during the exhibition you will discover special show promotions of these products.

Sandberg

D30

5 Carpenters Place
Clapham High Street
London
SW4 7TD
☎ 020 7565 7065
david.ellis@sandberg.co.uk
www.sandberg.co.uk

David Ellis, Connor Walden

Sandberg is an independent engineering consultancy with over 160 years' experience. Its Chartered Geologists and Geomaterials engineers offer extensive international experience in all aspects of stone selection, quarry assessment, stone evaluation and quality for external cladding / paving, internal lining / flooring and special applications. Expert opinion provided on in-service performance and long-term durability.

Consultancy services are supported by comprehensive in-house UKAS-accredited testing to BS EN, ASTM and other international standards. Specialised petrographic examination (including stone matching), scanning electron microscopy / ISIS energy dispersive X-ray microanalysis and XRD analysis services are also offered in-house.

Sandberg façade engineers and specialists provide expert advice for new and historic buildings, covering review of specifications, drawings, material properties, construction detailing / interfaces, design calculations, thermal performance, buildability and conservation remedial works. UKAS-accredited façade hard / soft body impact testing and hose testing is available, along with bespoke testing programmes, and investigation and condition surveys, including ground penetrating radar, rope access and dye inspection.

Simaflex

E16

42-44 Cutlers Road
South Woodham
Ferrers
Essex
CM3 5XJ
☎ 01621 742577
sales@dzambelis.co.uk
www.dzambelis.co.uk

Stella Zambelis, Jasper Zambelis


Grinding wheels sold by D Zambelis.

Skarlis Marble SA

F9

Aliveri
Evia 34500
Greece
☎ +30 22230 23815
info@skarlismarble.com
<https://skyrosmarble.com>

Ms Eleanna Skarlis

Skarlis Marble SA was founded by the architects Constantino and Georgia Skarlis (graduates of )

the Polytechnic University of Milan), both now in the marble business and sharing a passion for the beauty of this refined material.

From modest beginnings more than 40 years ago, Skarlis Marble became international with its first exports to Italy and North America. The company grew quite rapidly and now has a large state-of-the-art site in Greece with an exclusive quarry of more than 200,000m² on the island of Skyros.

Slabsmith

B30

Unit 2, Stacey's Yard
Station Road
Langley
Berkshire
SL3 6DB
☎ 01753 378715

office@stoneautomation.co.uk
<https://stoneautomation.co.uk/products/slabsmith>

Meet the founder on the Stone Automation stand

Slabsmith, available in the UK from Stone Automation, helps to automate your stone fabrication business and in the process lower your operating costs and increase your profits.

Different bundles are available according to the requirements of individual stone processing businesses, but all packages assist with digitising slab inventories and increasing efficiencies.

If you are looking for ways to improve the efficiency of your stone processing by managing your slab inventory and labelling and organising slabs, then come to the Slabsmith stand for a quick demonstration. You can meet the founder of Slabsmith and hear from UK fabricators who use this ingenious software.

Society for the Protection of Ancient Buildings (SPAB)

D57

37 Spital Square
London
E1 6DY
☎ 020 7377 1644
info@spab.org.uk
www.spab.org.uk

Meet the team on the stand

Offering information, publications and free, impartial technical advice on the care and repair of old buildings, the SPAB offers guidance on subjects ranging from controlling dampness in solid walls that need to 'breathe' to improving energy efficiency and the use of lime mortars.

It holds short courses and runs a unique six-month training scheme for young craftspeople. The SPAB is the UK's oldest, largest and most technically expert building conservation charity.



Stamford Stone (F56) supplies its own Clipsham and Lincolnshire limestone and imported stone for a wide range of projects.

Sorkun Mermer Ins Harf Nak San Ve Tic Ltd Sti

F48

Kocabas Mah. Sanayi Cad. No 18 Honaz
Denizli
Turkey
☎ +90 258 814 50 68
info@travertineworld.com
www.travertineworld.com

Meliksah Ismail Sorkun

Sorkun Marble – your specialist for travertine – presents a wide range of products, from travertine blocks to professionally produced finished goods such as wall and floor tiles and slabs, out of its own production facilities. The company is happy to answer any questions about travertine.

SRB International Pvt Ltd

C47

G-44, Sector 63 Noida
Uttar Pradesh 201301
India
☎ +91 965 4904474
himanshu@srbstonezone.com
http://srbstonezone.com

Himanshu Joshi

SRB International Pvt Ltd is a leading Indian company which owns and operates its own processing unit and exports granite monuments, slabs, tiles and blocks. It chooses the highest quality stone in accordance with its customers' needs, taking pride in every structural stone and monument it creates.

SRB Stone Zone is a division of SRB International Pvt Ltd, which is taking care of its natural stones division. It has a strong presence in Russia, Azerbaijan, Belarus, other CIS Countries, the Baltic nations, Turkey and Japan.

Specialising in the Indian stones of Absolute Black, Star Galaxy, Tan Brown, Vizag Blue, Paradiso, Himalayan Blue, Indian Aurora, Viscont White and Madurai Gold from South India, and New Imperial Red, Jhansi Red and Green Marble from North India, SRB International's processing team helps its clients in many projects. The company has many years of experience in personal cemetery monuments,

building and structural materials, interior and exterior natural stones. It has slabs and tile plants in Shahpura (Jaipur) and Ongole (AP) and a monuments processing plant in Salem (Tamil Nadu). Its processing units are well equipped with saws, calibration machines and polishing lines with hand finishing.

The company's customers represent notable importers, wholesalers and retailers of monuments, slabs and tiles as well as architects and builders. The company dedicates itself to them by supplying a wide variety of high quality granite products.

Stamford Stone Company Ltd

F56

Swaddywell Quarry
Stamford Road
Helpston
Peterborough
PE6 7EL
☎ 01780 740970
info@stamfordstone.co.uk
www.stamfordstone.co.uk

Dan Wilson

Stamford Stone is a leading natural stone company and global supplier of Clipsham limestone, working closely with architects and specifiers to supply an extensive range of award-winning stonework.

Stamford Stone is dedicated to supplying quality stone, earning itself a reputation for excellence with contributions to prestigious projects including the Houses of Parliament and Windsor Castle.

For self builders to restoration projects, its natural stone specialists provide expert advice and offer a bespoke design service, allowing customers to create unique and innovative solutions.

The company is passionate about sustainability. It has implemented environmentally friendly processes such as harvesting and recycling rainwater, putting full replanting and re-landscaping plans in place at its quarries, and using state-of-the-art technology to minimise its impact on the environment.

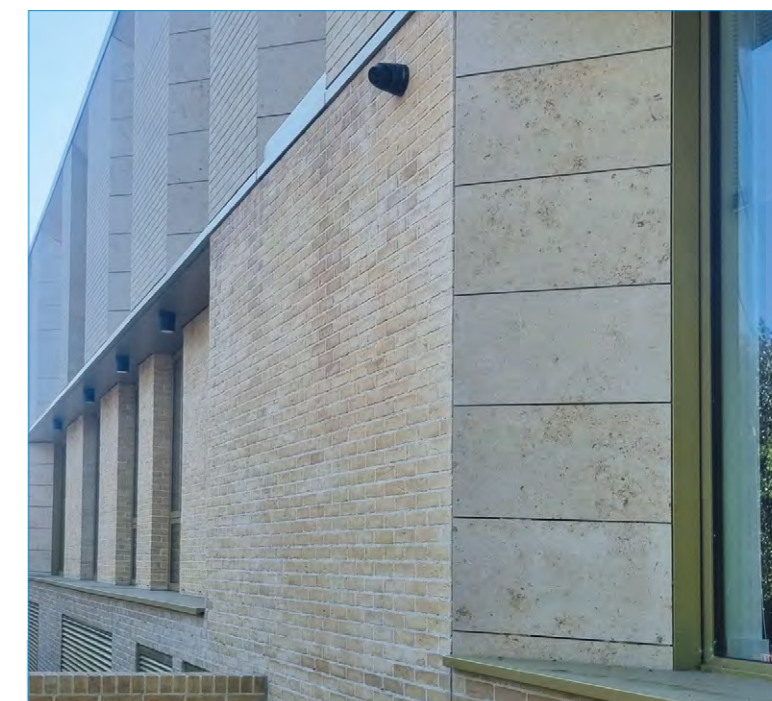
Stone Automation

B25 / B30 / C29

Unit 2, Stacey's Yard, Station Road, Langley, Slough SL3 6DB
☎ 01753 378 715
office@stoneautomation.co.uk
<https://stoneautomation.co.uk>

Salvatore Caruso

Stone Automation was formed last year to sell Donatoni Macchine stone processing machinery, Wodiam diamond tools and Slabsmith, for stock management and control.



Benenden School in Kent is one of the projects with natural stone cladding from Stone Cladding Systems (F25).

Stone Care Europe

P62

Via Lazzaro Spallanzani 8
Albano
S Alessandro
(BG) 24061
Italy
☎ +39 035 581270

commerciale@stone-care-europe.com
www.stone-care-europe.com

Franco Halasz, Francesca Madaschi, Alessandro Sabatino, Ivan Nardi

Stone Care Europe is one of Europe's leading manufacturers for solutions to problems with ceramic, engineered quartz and natural stone. Products have been developed for restoration, protection and maintenance for domestic and professional use, for interiors, exteriors and hard landscaping.

Stone Cladding Systems

F25

Westwood House
Rough Lane
Shirley
Ashbourne
Derbyshire
DE6 3AZ
☎ 01335 361000
sales@scs-stone.co.uk
www.scs-stone.co.uk

Jason Kennedy

Stone Cladding Systems specialises in providing its own tried and tested non-combustible Aztec Ventilated Rainscreen system, tested to the latest CWCT standards and partnering with Hilti for fixings to provide a complete solution. ■■■▶

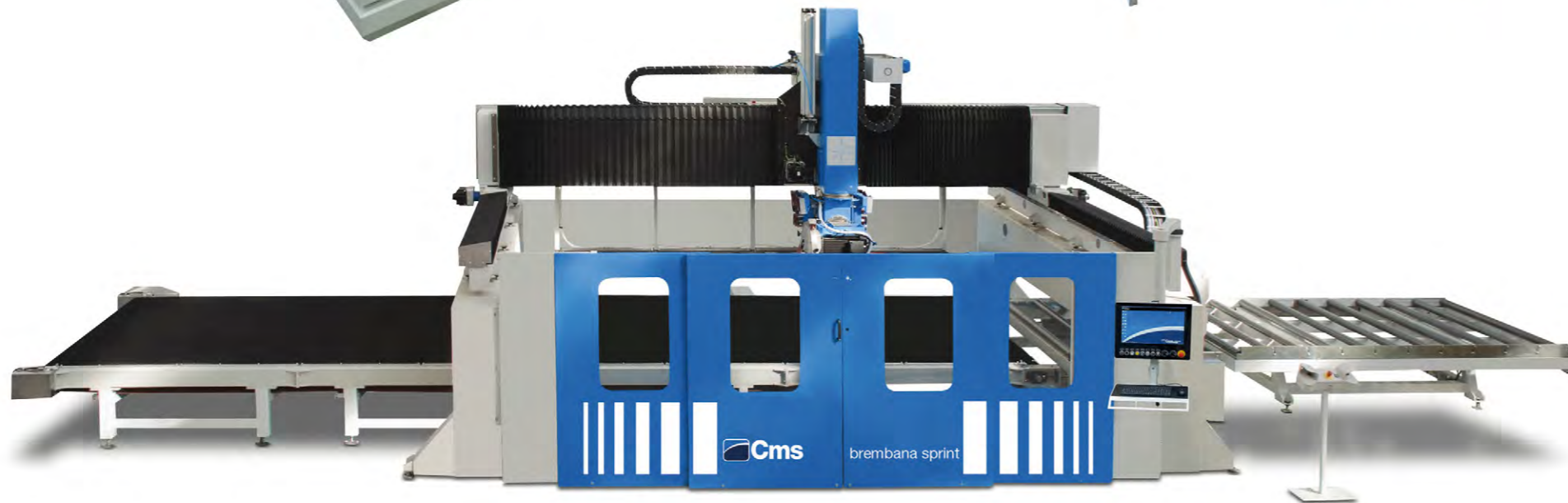


STONE AND GLASS GROUP



METAL & ADVANCED WATERJET TECHNOLOGY

**Quality, Honesty And Service
That's All We Offer!**



bouone



www.stoneandglassgroup.co.uk

Aztec is a light-weight rainscreen application utilising various types of natural stone, including sandstone, limestone, slate and granite sourced from some of the top dimensional stone quarries in UK as well as others in Europe, giving clients a wealth of choice of ethically and sustainably sourced stones.

Stone Factory | Global Impex Pvt Ltd

F30

A-76/77, Pebble Bay Phase-I
Opp. Asnani School
Katara Hills
Bhopal
Madhya Pradesh 462 043
India
☎ +91 94253 69839/ 99811 69839
info@stonefactory.in
www.stonefactory.in

Abhishek Saboo, Anuradha Saboo, Varun Dube

Stone Factory is based in Bhopal, India. Active in mining, processing, and supplying stone and stone products to a diversified customer base spread out across the globe, Stone Factory exports close to 3,000 full containers of sandstone, slate, limestone, quartzite, granite, and porphyry per year.

In the years since its inception, the company says the brand has become synonymous with quality, and its customers include leaders in the fields of architecture and design, building and construction, DIY retail, landscaping, and the worldwide natural stone trade.

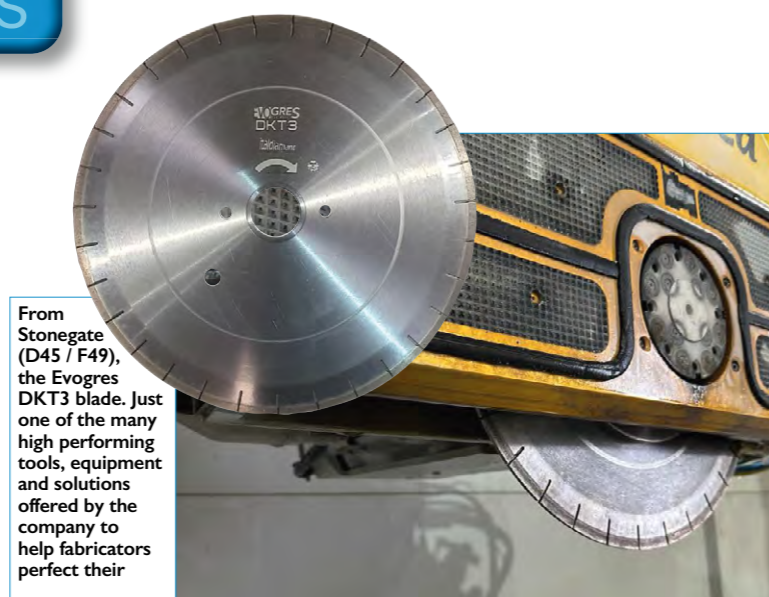
Stone Federation Great Britain

E30

Channel Business Centre
Ingles Manor
Castle Hill Ave
Folkestone
Kent
CT20 2RD
☎ 01303 856123
enquiries@stonefed.org.uk
www.stonefed.org.uk

Jane Buxey, Matt Robb, Sara Atkinson, Sarah Moses

Stone Federation Great Britain is the official trade association for the natural stone industry with over 100 years of experience in connecting architects, interior designers and clients with the best materials and companies as well as providing members with a wealth of resources and support.



From Stonegate (D45 / F49), the Evogres DKT3 blade. Just one of the many high performing tools, equipment and solutions offered by the company to help fabricators perfect their

Stone Gallery from the Valencia Region of Spain

G35

Ciutat Administrativa 9
D'Octubre-Torre 2
Valencia 46018
Spain

☎ +44 (0)7542 990342

londres@ivace.gva.es

www.meetvalenciancompanies.com

Fernando Garcia, Maria Franca Gonzalez, Encarni Abad

The Valencian Community is an important region of Spain, made up of three provinces (Castellón, Valencia and Alicante), which stands out for being the main region of Spain for extracting and processing of natural stone.

More than 45% of the marble exported from Spain comes from companies represented by the Valencian Institute for Business Competitiveness (IVACE) and Mármol de Alicante, Asociación de la Comunidad Valenciana. On Stand G35 in London, those companies will be: Amoros & Collado, Bateig, Ibero Stone, Antonio Fayos Rizo SL, Marmoles Emerex, Marmoles Navarro e Ibarra SL, Spanish Marble Group

The Valencia region of Spain is home to some of the country's best known stones. Meet them on the region's stand (G35) at the Natural Stone Show.



and The Select Firm.

The main destinations of the stone are Saudi Arabia, USA, Morocco, France, United Arab Emirates, Qatar, Mexico, UK, Kuwait and Portugal, although plenty of other countries also buy them.

Among the most demanded materials at an international level are the registered trademarked Crema Marfil, Rojo Alicante and Dark Emperador. Other materials from the region include: Gris Pulpis, Piedra Bateig, Marrón Imperial, Spanish Gold, Crema Buixcarro, Rojo Coralito and Rosa Valencia, although there are also many other limestones and granites.

In the province of Alicante, Monte Coto is the largest open-cast limestone deposit in Europe, from where one of the best-known materials, Crema Marfil, is extracted.

The natural stone of the Valencian community can be found in buildings all over the world – the Prado Museum (Madrid), Charles de Gaulle Airport (Paris), Bank of Spain (Madrid), l'Oceanográfico (Valencia), Tomorrow Square (Shanghai) and the AIG Tower (Hong Kong), to name some of the best known.

Stone Profit Systems

B15

1629 N Ashland Ave

Chicago

IL 60622

United States

☎ +1 248 909 9552

dylan@stoneprofits.com

www.stoneprofits.com

Dylan Weschler

Stone Profit Systems provides all-in-one, end-to-end, user-friendly, software for the natural stone, tile, quartz, and solid surface industries. Its enterprise resource planning (ERP) solution works with users to manage all aspects of your business, allowing complete visibility to help your company work efficiently while improving profitability.

The Stone Profit System has modules for inventory management, purchasing, quotations, estimates, holds, sales, scheduling, accounting, reports, and much more. The ERP software is flexible and can be tailored to meet the complex needs of distributors, fabricators, and manufacturers. If you visit Stone Profit Systems' Stand B15 to arrange a demo the company promises you will not be disappointed.

Stonegate Precision Tooling Ltd

D45 / F49

Melton House

Wyke Way

Melton

East Yorkshire

HU14 3HH

☎ 01482 620400

info@stonegatetooling.co.uk

www.stonegatetooling.com

Meet the team on the stand

Stonegate empowers stone fabricators to perfect their craft with advice on world class processes and

excellent service. Its dedicated team of advisors will be on the stand to show you all the innovative, high performing tools, equipment and solutions offered by the company to accomplish this. Visit the stand to see some of the cutting-edge technology the company has to make your factory more efficient.

Sundstrom Safety AB

B16

Vastergatan 4

Lagan 34150

Sweden

☎ +46 10484 87 33

info@srsafety.se

https://www.srsafety.com

See representatives on stand

World class respiratory protective equipment.

Summer Mermer Ith Ihr San Ve Tic Ltd Sti

E49

Tınaz Yolu Çiftlik Cd. No:17

Mentese

Mugla

Turkey

☎ +90 252 225 3342

hakan@summermarble.com

www.summermarble.com

Hakan Sungur

Summer Mermer has two marble quarries and two factories in Turkey. It produces Muğla Sugar and Muğla White marble from the quarry in Karaltı, in the Milas district of Muğla, and Lilac and Mother of Pearl block marble from the quarry in Kestaneçik, in the Kavaklıdere district of Muğla.

Summer Mermer produces stairs, flooring, wall coverings and slabs in eight colours and patterns in various sizes, selected from the block marbles from the quarries. The stone can be supplied polished, honed, sandblasted and straight off the saw.

Since 2002, the company has been exporting its natural stones to many countries, increasing employment at its quarries and factories by following an export-oriented policy.

Terra Natural

D6

122 Cashmere Drive

Andover

Hampshire

SP11 6ZQ

☎ 07960 161764

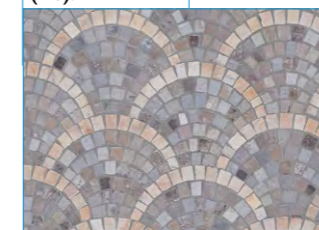
sales@terrannatural.co.uk

www.terrannatural.co.uk

Denis Ashton, Paul Ashton, Alan Stewart

Terra Natural provides natural stone to elevate architecture and design. Whether you require a small or large quantity of materials, Terra Natural has the expertise and resources to meet your needs. Its extensive inventory

Natural stone to elevate architecture and design from Terra Natural (D6).



includes a variety of standard and customised materials for project-based orders, taking pride in sourcing some of the most exquisite natural stones available and providing it as tiles, slabs, cut-to-size, flagstones, mesh paving, paving stones, cobbles or other configuration that you require.

Terra Natural says accountability is one of its core values, and it strives to be accountable for all its actions and interactions with clients, employees, and communities, fostering a culture where individuals feel comfortable raising concerns and addressing issues to improve the company's performance, thus building stronger relationships with each other, clients, and the environment.

Terzago Machine

E16

42-44 Cutlers Road
South Woodham
Ferrers
Essex
CM3 5XJ
☎ 01621 742577
sales@dzambelis.co.uk
www.dzambelis.co.uk

Stella Zambelis, Jasper Zambelis

The complete range is available from D Zambelis. For more than 100 years Terzago has been manufacturing primary and secondary saws for the world. The range includes cast iron block cutters with up to 3.5m blades and CNC bridge saws. A popular model in the UK is the CUTe interpolated four axes bridge saw with ½in gas CNC tool connection.

New from UK Solmar (D25) is Chroma – a blend of natural stone and an environmentally friendly resin product derived from cashew nuts.



Terzago Robotics

B17

Terzago Robotics Srl
Viale San Bartolomeo 288
19126 La Spezia (SP)
Italy
☎ +39 01871866880
www.terzagorobotics.com

See representatives on stand

In 1996 Matteo and Luca Terzago filed the first patent for the use of robots in the stone sector. With close contact with some of the most prestigious architecture and sculpture studios in the world Terzago has taken part in prestigious projects in every continent.

Thibaut

AI, BI, CI

Avenue de Bischwiller
Vire I4500
France
☎ +33 231666803
www.thibaut.fr

See representatives on the stand

Represented by On Point Engineering, Thibaut was founded in 1959. It designs, manufactures and exports machines worldwide for the processing of all types of natural stone and synthetic materials.

Tiling Logistics

C16

16 Seeleys Road
Tyseley Industrial Estate
Birmingham
B11 2LA
☎ 0121 773 9129
sales@tilinglogistics.co.uk
www.tilinglogistics.co.uk

See the team on the stand

Tiling Logistics Ltd supplies natural stone and tile restoration chemicals and machinery from around the world. At the show it will show two main brands: Hypergrinder Machines and Faber Chemicals. Both high quality and made in Italy. The company offers a full range of training in-house at its premises in Birmingham. Combining this with its focus on support and a next day delivery service across the UK.

Ugr Ugur Hidrolik & Pnomatik Makine Sanayi Tic Ltd Sti

C30

Dudullu OSB Imes San. Sitesi 2. Sosyal Tesisler No:43
Y.Dudullu
Istanbul
Turkey
☎ +90 216 466 68 40
halit@adelsanmakine.com
www.ugurhidrolik.com/index.php

Halit Kafadar

Hydraulic and pneumatic equipment.

UK Solmar Ltd

D25

Unit 6 Raynham Road Industrial Estate
Bishop's Stortford
Hertfordshire
CM23 5PB
☎ 01279 655498
m.cioffi@uksolmar.co.uk

Marco Cioffi

High quality Italian marble and natural stone is available for immediate delivery from UK Solmar warehouse in Bishop's Stortford. Stone from all over the world has been selected by the company for its beauty, thanks to the established relationships it has with Italian and international quarries.

A wide range of premium quality materials with fast deliveries and competitive prices are Solmar UK's strengths, although at The Natural Stone Show in London it will introduce its first engineered stone. It is a hybrid material from Chroma, inspired by the Japanese art of Kintsugi, where broken pottery is repaired using lacquer dusted or mixed with powdered minerals such as gold, silver, or platinum.

Chroma blends natural stone with engineered stone, made using a resin derived not from petrochemicals but the shells of cashew nuts, to be environmentally



For a quick, clean finish, ADI has the new OctoPads. The Pads are now in stock in the UK at Waters Group (E56).

friendly. It is a new look for those who want an engineered surface without the environmental impact of a resin from the petrochemical industry.

Usel Makine Insaat San Ve Tic Ltd Sti

B18

Dudullu OSB Imes 104. Sk A Blok No:5
Umraniye
Istanbul 34776
Turkey
☎ +90 216 526 4575
usel@usel.com.tr
www.usel.com.tr

Ugur Simsir

Usel Makina is a company that produces three, four and five axes bridge cutting and processing machines and water jets. It has more than 20 years experience of making high quality and high precision CNC machines that it has sold in 25 countries on five continents. It also makes machines for the German Knuth and Löffler companies.

Vetro Tooling Ltd

D36

Unit 10 Westmayne Industrial Park
Bramston Way
Laindon
Essex
SS15 6TP
☎ 01268 766807
sales@vetrotooling.com
www.vetrotooling.com

Stone Tooling & Machinery Division Team

Vetro Tooling has been supplying the stone and glass processing industries for decades with high quality tooling and machinery. For its stone tooling division, it has partnerships with many quality tooling providers and has brought a variety of new and exciting lines to the UK market. This includes the K-Line range of CNC tooling, with Vetro not only stocking over 95% of the range for next day delivery, but with its in-house workshop it can re-grind and re-spark the tools to double their life. Vetro Tooling

is continually evolving and improving its whole stone tooling range – the latest addition was the ACE range of Cosentino-approved tooling that includes bridge saw blades, drills, small blades and so on. Vetro is also agent for the Italian Denver stone machinery in Ireland. Denver has some inspiring ranges and excels in technological advances.

VSM Abrasives

E16

42-44 Cutlers Road
South Woodham
Ferrers
Essex
CM3 5XJ
☎ 01621 742577
sales@dzambelis.co.uk
www.dzambelis.co.uk

Stella Zambelis, Jasper Zambelis

VSM Abrasives are available exclusively through D Zambelis in the UK. The range of carbonadum products the company makes in Germany has been used by the stone industry for more than 20 years.

Waters Group

E56

Liskard Business Park
Quimperle Way
Liskard
PL14 3US
☎ 0800 999 47 58
info@watersgrp.co.uk
<https://watersgrp.co.uk>

Daniel Waters, Daniel Down, Reece Floyd

Waters Group is a family-owned and run business that supplies quality tooling, equipment and consumables throughout the UK and Ireland. With over 35 years of experience, Waters Group has long established links with many of the market leading manufacturers. Working with them, it is able to supply a wide range of premium products. The Waters Group dedicated sales team is available to give advice and guidance on all of the products the company sells, providing the highest level of customer service to ensure all customers' individual tooling needs are met.

Among the latest releases from Wodiam (C29) is the Balder blade for sintered materials. It follows on from the Wodiam Pascal to reflect the evolving composition of Dekton, Lapitec, Infinity and other sintered materials. It has been developed with a focus on helping fabricators achieve better top and bottom cutting results and impeccable mitres on all types of sintered materials.



Wodiam

C29

Unit 2, Stacey's Yard
Station Road
Langley
Berkshire
SL3 6DB
☎ 01753 378715
office@stoneautomation.co.uk
<https://stoneautomation.co.uk>

See Wodiam technicians on the stand

Wodiam diamond tools are supplied in the UK by Stone

Automation. The tools help fabricators and stonemasons achieve high efficiency with their CNC machines and saws, with the Wodiam team making sure fabricators, stone processors and masons know how to get the best out of their machines with clean cuts and high speeds.

Wodiam is a family business with a passion for cutting and drilling at the highest quality and fastest pace. The tools cut cleanly at high speeds for improved efficiency.

Every Wodiam technician is trained to help stone processing companies get the best out of their Wodiam tools on the particular machine they are being used with. Most importantly, the technicians are there with ongoing support and training so customers continue to use their blade / machine combinations to get the cleanest and fastest cuts.

Visit the Wodiam stand to see the latest blades and hear about the latest developments in polishing sets and new edge polisher wheels. And if you want to see how quickly a Wodiam blade can cut ultra hard and sintered materials, come and see the video streams on the stand.

The Worshipful Company of Masons

Stand number C59

8 Little Trinity Lane
London
EC4V 2AN
☎ 0207 489 7834
[email: clerk@masonslivery.org](mailto:clerk@masonslivery.org)
www.masonslivery.org

Liverymen of The Company

The Worshipful Company of Masons is number 30 in the order of precedence of the ancient Livery Companies of the City of London, receiving its Grant of Arms from King Edward IV in 1515. The Livery Companies form part of the administration of the City of London. The Masons Livery Company preserves and encourages the use of natural stone in the built environment, supporting through its charities the training of craftspeople and the preservation and appreciation of historic stone buildings.

Xiamen Boss Imp & Exp Co Ltd

F40

Jiangtuo Road
Xiamen 361009
China
☎ +86 592 3126805
bs805@boshi-stone.com
www.boshi-stone.com

See representatives on the stand

Xiamen Boss Imp&Exp Co Ltd is a major Chinese stone supplier, mainly providing quartz stone, artificial stone, sintered stone, nano stone, granite, marble and other stones. The company has a good reputation with many customers all over the world, including the Americas, Europe, Middle East and Africa. It is looking forward to establishing long-term and stable business relationships in the UK.

Xiamen Leading Stone Imp & Exp Co Ltd

F45

Room 503 No 526 Xinglinwan Road
Xiamen 361000
China
☎ +86 189 5000 2161
info@leadingstone.cn
<https://leadingstone.cn>

Meet the representatives on the stand

For more than 20 years Leading Stone, located in Xiamen, has focused on granite and memorials production and export. Rigorous quality control and attention to customer service have won customers' trust in Leading Stone worldwide.

Leading Stone is a project oriented stone producer. Its main products are: memorials, kerbs, paving, and masonry such as quoins, heads, key stones, door surrounds, window surrounds and cills, arches, gate posts, pillars, plinths, steps and stairs, slabs, sculpture and monuments and vases. Its products include engineered quartz, limestone, granites G603, G654, G682, G684, marble, sandstone, slate. Leading Stone also supplies tools, including diamond tools.

Leading Stone pays special attention to the selection of the blocks it uses, the processing, quality checking, packing and loading to ensure all products arrive in pristine condition.

Xiamen Maixee Imp & Exp Co Ltd

D40

23B, Building 32
Moer Lian Hua
Siming District
Xiamen 361009
China
☎ +86 136 0609 0704
info@maixee.com
www.maixee.com

Nina Wong

Maixee specialises in natural stone for commercial projects worldwide. Its focus is on providing high-quality Chinese granite, slate, and marble. It is also the exclusive UK sales representative for Xiang Xin Quartz factory.

Since 2008, this company has established strong connections with five of the top stone manufacturers in China and has direct access to quarries of Chinese granite, slate, and marble, and its location in Xiamen allows it to source top quality natural stone from all over the world.

Its expertise in sourcing stone and fabricating it has earned it a reputation as a leading provider of natural stone products for high-end projects such as 375 Kensington High Street in London, King Palace in Malaysia, the Louis Vuitton flagship store in Singapore, Wilshire Grand Hotel in California, Edition Hotels in Tokyo and Ginza, GWL Hotels in Perryville and Manteca in the USA, 101 California, One City Square in Philadelphia, USA, and many others.

Xiamen New Europe Imp & Exp Trading Co Ltd

D29

Unit 423-424 Building No.1
Free Trade Times Square No35
Xiangxing 4th Rd
Huli District 360000
China
☎ +86 18859236030
owen@dongxingstone.com
www.dongxingterrazzo.com

Meet representatives on the stand

New Europe focuses on natural granite, marble, and other luxury stones, as well as terrazzo, composite tiles and other artificial stones. The terrazzo contains no resin, so is environmentally friendly with no volatile organic compounds. It is long lasting, slip resistant and colourful, providing an elegant, timeless natural-look with a luxurious feel. It is an ideal material for projects such as shopping malls, commercial building lobbies and hotels, as well as domestic residences.

Zenith C SpA

G29

Aurisina Cave 74
Duino-Aurisina
(TS) 34011
Italy
☎ +393 2016 25452
alessandro.cragnolini@zenithc.com
www.zenithc.com

Alessandro Cragnolini

Zenith is an Italian company with headquarters in Trieste, a branch in Verona and its own quarries in Italy and South Africa. It specialises in the production and sale of blocks, slabs and cut-to-size marbles, granites, natural stones and artificial hard surfaces for structural use, such as flooring, cladding and decorative purposes in construction, landscaping, furniture and monumental art. Over the past decades, Zenith has supplied its materials for thousands of architectural, interior design, urban and monumental decoration projects across Italy, Europe and the world.

The Aurisina Granite quarry of Zenith C Spa.

